

WOLTMAN ROTARY HEADS



WOLTMAN Technisch Handelsbedrijf b.v.

Ambachtsweg 16

3381 LN GIESSENBURG

Telephone +31(0)184-652 044

Telefax +31(0)184-651 016

E-mail info@woltmanbv.com

Internet : www.woltmanbv.com



FOUNDATION RIGS AND CRAWLER CRANES

CONTENTS

FORWORD	Page 2
WOLTMAN WG-8	Page 3 – 4
WOLTMAN WG-15	Page 5 – 6
WOLTMAN WG-20	Page 7 – 8
WOLTMAN WG-40	Page 9 – 10
WOLTMAN WG-50	Page 11 – 12



FOUNDATION RIGS AND CRAWLER CRANES

FORWORD

Woltman Technisch Handelsbedrijf b.v. is specialized in the developing and manufacturing of hydraulic foundation rigs, crawler cranes and additional equipment. For manufacturing the machines Woltman Technisch Handelsbedrijf b.v. uses only high quality components and the latest techniques. Also the environment and personal safety are essential during the development of the various rigs.

Woltman Technisch Handelsbedrijf b.v. has a complete line of foundation rigs and crawler cranes, which is constantly developed, improved and adapted to the latest demands from the market. This is a result of a close cooperation with piling contractors and their operators.

In this brochure we will give you a specification of our foundation rigs and crawler cranes. This specification has been divided in the following types :

- WOLTMAN WG-8
- WOLTMAN WG-15
- WOLTMAN WG-20
- WOLTMAN WG-40
- WOLTMAN WG-50

HEAD OFFICE

Sales office :

WOLTMAN Technisch Handelsbedrijf bv
Ambachtsweg 16
3381 LN GIESSENBURG
Tel. +31 (0) 184-652 044
Fax +31 (0) 184-651 016
E-mail info@woltmanbv.com

Maintenance, repair and overhaul :

WOLTMAN Piling Equipment bv
Ambachtsweg 16
3381 LN GIESSENBURG
Tel. +31 (0) 184-652 044
Fax +31 (0) 184-651 016
E-mail info@woltmanbv.com



FOUNDATION RIGS AND CRAWLER CRANES

WOLTMAN WG-8

GENERAL INFORMATION

Woltman Technisch Handelsbedrijf b.v. can offer a complete line of rotary heads. These rotary heads are very compact and fitted with high quality components, which results in an excellent reliability. The Woltman rotary heads are constantly developed, improved and adapted to the latest demands from the market. This is a result of a close cooperation with piling contractors and their operators.

DESCRIPTION WG-8 ROTARY HEAD

The WG-8 rotary head is very compact and equipped with one Rexroth hydraulic motor, which is fitted on a planetary reduction gear. The reduction gear is fitted with a pinion, which powers the main slewing ring.

The standard WG-8 rotary head is equipped with fixed guiding claws, which are fitted with PA6 wear strips. These guiding claws are welded on the back support plate of the rotary head on the requested width. Optional the WG-8 can be fitted with demountable guiding claws and a back plate which has several hole patterns (for fitting on different machines). The top of the WG-8 rotary head is fitted with a 5" lifetime lubricated concrete swivel. This is a complete new and revolutionar concrete swivel with a built in wear indicator, which indicates when worn out seals have to be replaced.

On the concrete swivel a 5" bend piece with Victaulic seals is fitted. For connecting the rotary head to an auger, the bottom of the WG-8 is equipped with a flange. The dimensions of this flange are dependent on the type of coupling which is used bij the customer.

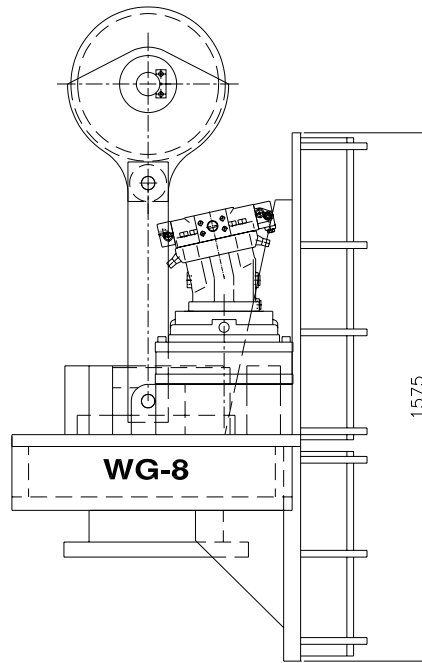
TECHNICAL SPECIFICATIONS WG-8

Maximum torque	: 8 Ton Metres
Maximum speed without load	: 0-30 Rpm
Maximum speed at 8 TM	: 20 Rpm
Maximum output shaft	: 340 mm
Standard concrete swivel	: 5"
Hydraulic motor	: Rexroth
Maximum working pressure	: 300 Bar
Maximum oilflow	: 350 Ltr/min.
Height	: 1.575 mm
Depth	: 1.080 mm
Width	: 1.115 mm
Minimum stand off	: 450 mm
Total weight WG-8	: 2.400 Kg

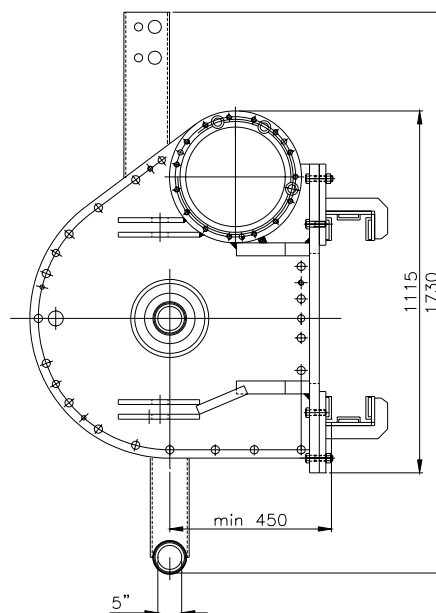


FOUNDATION RIGS AND CRAWLER CRANES

SIDE VIEW WG-8



TOP VIEW WG-8





FOUNDATION RIGS AND CRAWLER CRANES

WOLTMAN WG-15

GENERAL INFORMATION

Woltman Technisch Handelsbedrijf b.v. can offer a complete line of rotary heads. These rotary heads are very compact and fitted with high quality components, which results in an excellent reliability. The Woltman rotary heads are constantly developed, improved and adapted to the latest demands from the market. This is a result of a close cooperation with piling contractors and their operators.

DESCRIPTION WG-15 ROTARY HEAD

The WG-15 rotary head is very compact and equipped with two Rexroth hydraulic motors, which are fitted on planetary reduction gears. The reduction gears are fitted with a pinion, which powers the main slewing ring.

The standard WG-15 rotary head is equipped with fixed guiding claws, which are fitted with PA6 wear strips. These guiding claws are welded on the back support plate of the rotary head on the requested width. Optional the WG-15 can be fitted with demountable guiding claws and a back plate which has several hole patterns (for fitting on different machines). The top of the WG-15 rotary head is fitted with a 5" lifetime lubricated concrete swivel. This is a complete new and revolutionar concrete swivel with a built in wear indicator, which indicates when worn out seals have to be replaced.

On the concrete swivel a 5" bend piece with Victaulic seals is fitted. For connecting the rotary head to an auger, the bottom of the WG-15 is equipped with a flange. The dimensions of this flange are dependent on the type of coupling which is used bij the customer.

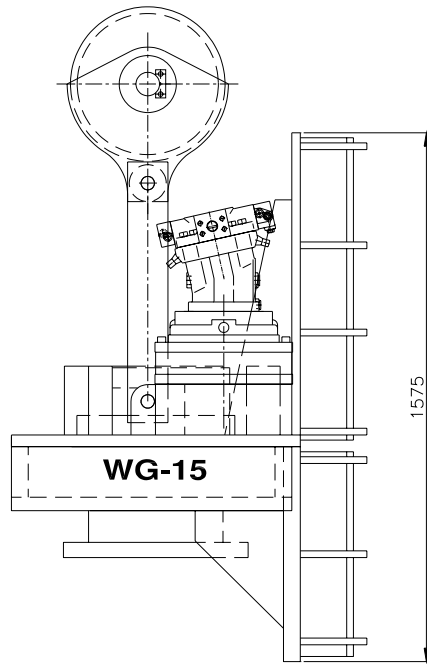
TECHNICAL SPECIFICATIONS WG-15

Maximum torque	: 15 Ton Metres
Maximum speed without load	: 0-29 Rpm
Maximum speed at 15 TM	: 14 Rpm
Maximum output shaft	: 350 mm
Standard concrete swivel	: 5"
Hydraulic motors	: Rexroth
Maximum working pressure	: 300 Bar
Maximum oilflow	: 520 Ltr/min.
Height	: 1.575 mm
Depth	: 1.058 mm
Width	: 1.281 mm
Minimum stand off	: 450 mm
Total weight WG-15	: 3.400 Kg

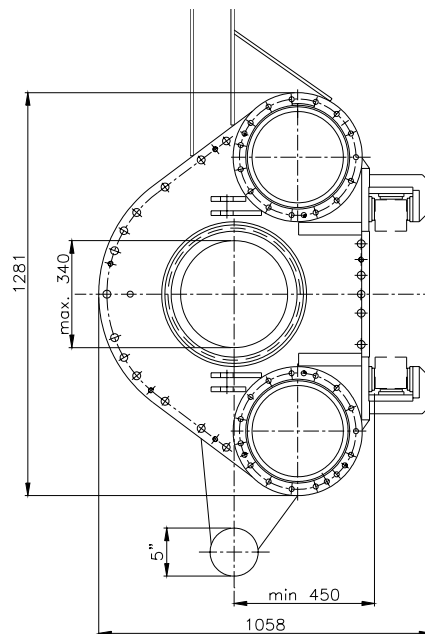


FOUNDATION RIGS AND CRAWLER CRANES

SIDE VIEW WG-15



TOP VIEW WG-15





FOUNDATION RIGS AND CRAWLER CRANES

WOLTMAN WG-20

GENERAL INFORMATION

Woltman Technisch Handelsbedrijf b.v. can offer a complete line of rotary heads. These rotary heads are very compact and fitted with high quality components, which results in an excellent reliability. The Woltman rotary heads are constantly developed, improved and adapted to the latest demands from the market. This is a result of a close cooperation with piling contractors and their operators.

DESCRIPTION WG-20 ROTARY HEAD

The WG-20 rotary head is very compact and equipped with two Rexroth hydraulic motors, which are fitted on planetary reduction gears. The reduction gears are fitted with a pinion, which powers the main slewing ring.

The standard WG-20 rotary head is equipped with fixed guiding claws, which are fitted with PA6 wear strips. These guiding claws are welded on the back support plate of the rotary head on the requested width. Optional the WG-20 can be fitted with demountable guiding claws and a back plate which has several hole patterns (for fitting on different machines). The top of the WG-20 rotary head is fitted with a 5" lifetime lubricated concrete swivel. This is a complete new and revolutionar concrete swivel with a built in wear indicator, which indicates when worn out seals have to be replaced.

On the concrete swivel a 5" bend piece with Victaulic seals is fitted. For connecting the rotary head to an auger, the bottom of the WG-20 is equipped with a flange. The dimensions of this flange are dependent on the type of coupling which is used bij the customer.

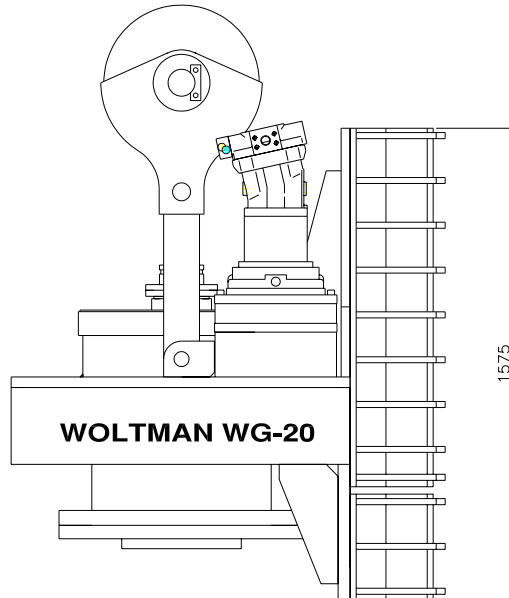
TECHNICAL SPECIFICATIONS WG-20

Maximum torque	: 20 Ton Metres
Maximum speed without load	: 0-29 Rpm
Maximum speed at 15 TM	: 14 Rpm
Maximum output shaft	: 500 mm
Standard concrete swivel	: 5"
Hydraulic motors	: Rexroth
Maximum working pressure	: 325 Bar
Maximum oilflow	: 620 Ltr/min.
Height	: 1.575 mm
Depth	: 1.171 mm
Width	: 1.500 mm
Minimum stand off	: 600 mm
Total weight WG-20	: 4.300 Kg

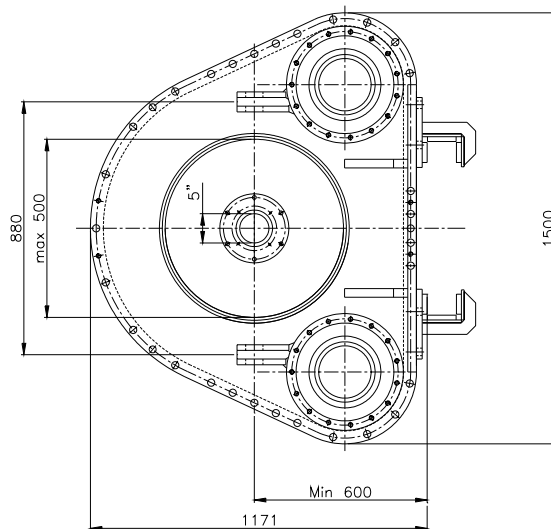


FOUNDATION RIGS AND CRAWLER CRANES

SIDE VIEW WG-20



TOP VIEW WG-20





FOUNDATION RIGS AND CRAWLER CRANES

WOLTMAN WG-40

GENERAL INFORMATION

Woltman Technisch Handelsbedrijf b.v. can offer a complete line of rotary heads. These rotary heads are very compact and fitted with high quality components, which results in an excellent reliability. The Woltman rotary heads are constantly developed, improved and adapted to the latest demands from the market. This is a result of a close cooperation with piling contractors and their operators.

DESCRIPTION WG-40 ROTARY HEAD

The WG-40 rotary head is very compact and equipped with four Rexroth hydraulic motors, which are fitted on planetary reduction gears. The reduction gears are fitted with a pinion, which powers the two main slewing rings. The construction of the WG-40 rotary head is made of two casted parts, which are suitable for a retraction force of 100 tonnes. This retraction force is essential for executing drilling jobs with displacement piles.

The standard WG-40 rotary head is equipped with fixed guiding claws, which are fitted with PA6 wear strips. These guiding claws are welded on the back support plate of the rotary head on the requested width. Optional the WG-40 can be fitted with demountable guiding claws and a back plate which has several hole patterns (for fitting on different machines). The maximum output shaft in the WG-40 is 500 mm. For connecting the rotary head to an auger, the bottom of the WG-20 is equipped with a flange. The dimensions of this flange are dependent on the type of coupling which is used by the customer.

The top of the WG-40 is equipped with a cover for the protection of the hydraulic motors. On this cover a platform is fitted, on which a worker can stand for guiding the armouring and concrete hose.

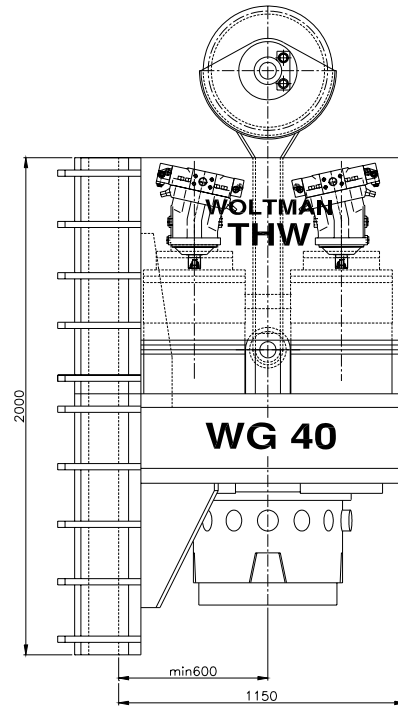
TECHNICAL SPECIFICATIONS WG-40

Maximum torque	: 40 Ton Meter
Maximum speed without load	: 0-19 Rpm
Maximum speed at 40 TM	: 9 Rpm
Maximum output shaft	: 500 mm
Hydraulic motors	: Rexroth
Maximum working pressure	: 350 Bar
Maximum oilflow	: 800 Ltr/min.
Height	: 2.000 mm
Depth	: 1.150 mm
Width	: 1.650 mm
Minimum stand off	: 600 mm
Total weight WG-40	: 8.000 kg

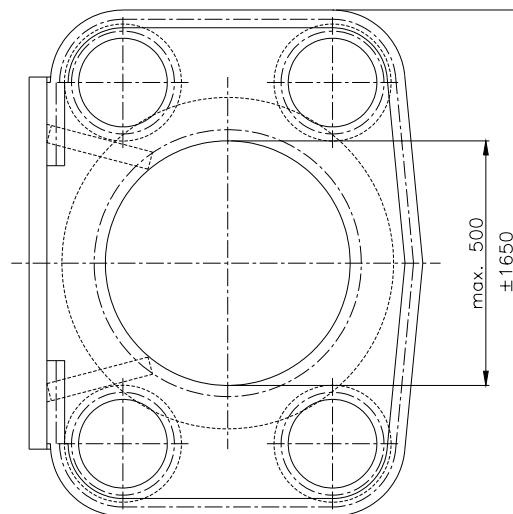


FOUNDATION RIGS AND CRAWLER CRANES

SIDE VIEW WG-40



TOP VIEW WG-40





FOUNDATION RIGS AND CRAWLER CRANES

WOLTMAN WG-50

GENERAL INFORMATION

Woltman Technisch Handelsbedrijf b.v. can offer a complete line of rotary heads. These rotary heads are very compact and fitted with high quality components, which results in an excellent reliability. The Woltman rotary heads are constantly developed, improved and adapted to the latest demands from the market. This is a result of a close cooperation with piling contractors and their operators.

DESCRIPTION WG-50 ROTARY HEAD

The WG-50 rotary head is very compact and equipped with four Rexroth hydraulic motors, which are fitted on planetary reduction gears. The reduction gears are fitted with a pinion, which powers the two main slewing rings. The construction of the WG-50 rotary head is made of two casted parts, which are suitable for a retraction force of 100 tonnes. This retraction force is essential for executing drilling jobs with displacement piles.

The standard WG-50 rotary head is equipped with fixed guiding claws, which are fitted with PA6 wear strips. These guiding claws are welded on the back support plate of the rotary head on the requested width. Optional the WG-50 can be fitted with demountable guiding claws and a back plate which has several hole patterns (for fitting on different machines). The maximum output shaft in the WG-50 is 500 mm. For connecting the rotary head to an auger, the bottom of the WG-20 is equipped with a flange. The dimensions of this flange are dependent on the type of coupling which is used by the customer.

The top of the WG-50 is equipped with a cover for the protection of the hydraulic motors. On this cover a platform is fitted, on which a worker can stand for guiding the armouring and concrete hose.

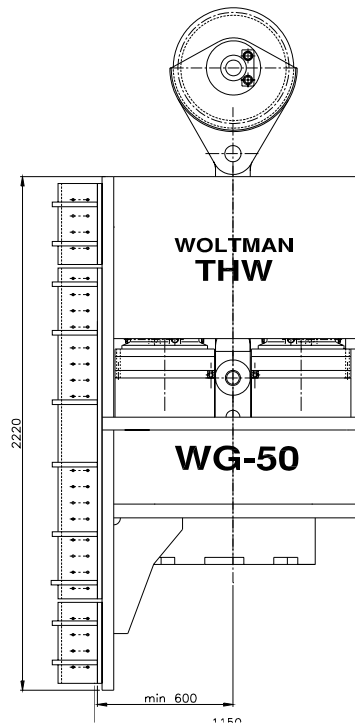
TECHNICAL SPECIFICATIONS WG-50

Maximum torque	: 50 Ton Meter
Maximum speed without load	: 0-16 Rpm
Maximum speed at 40 TM	: 7 Rpm
Maximum output shaft	: 600 mm
Hydraulic motors	: Rexroth
Maximum working pressure	: 350 Bar
Maximum oilflow	: 800 Ltr/min.
Height	: 2.220 mm
Depth	: 1.150 mm
Width	: 1.450 mm
Minimum stand off	: 600 mm
Total weight WG-50	: 8.500 kg



FOUNDATION RIGS AND CRAWLER CRANES

SIDE VIEW WG-50



TOP VIEW WG-50

