

BROCHURE

THW 3017-D DRILLING RIG



WWW.WOLTMANBV.COM



FOUNDATION RIGS AND CRAWLER CRANES

FORWORD

Woltman Technisch Handelsbedrijf b.v. is specialized in the developing and manufacturing of hydraulic foundation rigs, crawler cranes and additional equipment. For manufacturing the machines Woltman Technisch Handelsbedrijf b.v. uses only high quality components and the latest techniques. Also the environment and personal safety are essential during the development of the various rigs.

Woltman Technisch Handelsbedrijf b.v. has a complete line of foundation rigs and crawler cranes, which is constantly developed, improved and adapted to the latest demands from the market. This is a result of a close cooperation with piling contractors and their operators.

In this brochure we will give you a specification of our THW 3017-D drilling rig.

HEAD OFFICE

Sales office :

WOLTMAN Technisch Handelsbedrijf bv
Ambachtsweg 16
3381 LN GIESSENBURG
Tel. +31 (0) 184-652 044
Fax +31 (0) 184-651 016
E-mail info@woltmanbv.com

Maintenance, repair and overhaul :

WOLTMAN Piling Equipment bv
Ambachtsweg 16
3381 LN GIESSENBURG
Tel. +31 (0) 184-652 044
Fax +31 (0) 184-651 016
E-mail info@woltmanbv.com



FOUNDATION RIGS AND CRAWLER CRANES

THW 3017-D

GENERAL INFORMATION

The THW 3017-D is a light and compact drilling rig with a total weight of 30 tonnes including a rotary head. The standard rotary head in a THW 3017-D is a WG-8 (8 TM), which is very suitable for executing light drilling jobs with CFA piles. It's extreme mobility and compact measurements enable the rig to perform drilling activities on hard to reach jobsites.

UNDERCARRIAGE

The THW 3017-D has a D4E undercarriage (H-shaped construction) with BERCO trackparts. The standard 3-rib trackplates are 900 mm wide. The undercarriage can be hydraulically extended from a transport width of 3.000 mm to an operating width of 3.600 mm and the hydraulic trackdrives are O & K Planetary Gears.

LEADER

The fully closed leader of the THW 3017-D has a standard length of 16,5 metres and the main dimensions are 500 x 500 mm. In order to reach the maximum leader length of 19,5 metres a 3 metre extension can be obtained as an option.

The leader is suited for a maximum torque of 15 TM over it's full length and the maximum extraction force over the leader head is 30 tonnes. The leader is also fitted with a leader head, which has an extendable arm for the service winch. In order to reduce the transport length of the machine to approximately 16,0 metres (with 19,5 metres leader) a hydraulic folding system can be fitted on the leader (option).

ENGINE AND HYDRAULIC SYSTEM

The power unit comprises a CATERPILLAR 3126B ATAAC diesel engine (TIER 2) producing 300 Hp (220 Kw) at 2200 Rpm with two Rexroth hydraulic pumps and Rexroth valve blocks. The hydraulic system is "Open Loop". Control of the rig is by means of hydraulically operated joysticks in the operator's cabin. When required the hydraulic system can be filled with biodegradable oil (option).

WINCHES

The THW 3017-D is equipped with the following winches :

WINCH TYPE	LINE-PULL	SPEED	PARTS	DRUM	CABLE
Main winch	7,5 tonnes	0-40 mtr/min.	4	Woltman	19 mm
Pull-down winch**	4,0 tonnes	0-15 mtr/min.	1	Woltman	16 mm
Service winch	3,0 tonnes	0-40 mtr/min.	1	Complete winch	14 mm

** A pull-down winch in combination with an automatic lowering system for the main winch is optional.

CABINS AND OTHER SPECIFICATIONS

The operator's cabin of the THW 3017-D has enough room and will be arranged ergonomically. The operator's seat is of a good quality and has built-in joysticks for controlling the rig.



FOUNDATION RIGS AND CRAWLER CRANES

Standard control of the rig is by means of hydraulic joysticks (electric control is optional). All instruments in the operator's cabin are easy to oversee and the standard equipment consists of :

- An Inclinometer
- A MFA-system for monitoring temperatures, pressures and tank contents
- A Blaupunkt Radio/CD player
- An adjustable heating system (Airconditioning is optional)

The engine compartments are easily accessible and als easy to dismount. In order to reduce the engine noise, all cabin parts will be fitted with sound isolating foam. All cabins will also be fitted with inner illumination and on the outside of the rig several working lights will be mounted. The complete rig will be painted in your company colours.

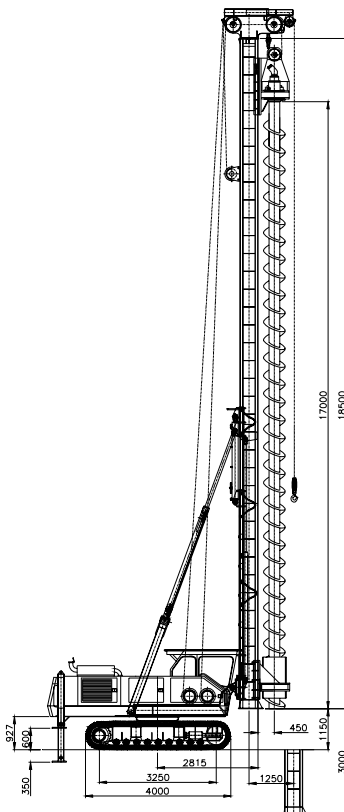
The THW 3017-D has a sliding brace with a stroke of 1.250 mm for spotting on the pile position. The counterweight is fixed and in the counterweight two outriggers have been mounted. With the help of these outriggers and the leader the machine can be lifted off the ground and the undercarriage can be freely rotated. This makes the loading of the THW 3017-D on a low loader a lot easier.



FOUNDATION RIGS AND CRAWLER CRANES

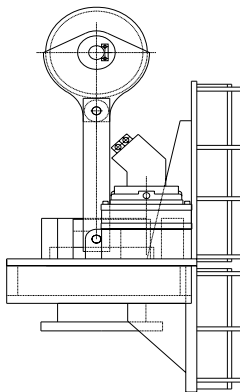
TECHNICAL SPECIFICATIONS THW 3017-D AND WG-8

THW 3017-D DRILLING RIG



Standard leader length	: 16,50 metres
Maximum leader length	: 19,50 metres
Main dimensions of leader	: 500 x 500 mm
Stroke of leader	: 3.000 mm
Stroke of spotting device	: 1.250 mm
Capacity of main winch	: 7,5 tonnes
Speed of main winch	: 0-40 mtr/min.
Capacity of service winch	: 3,0 tonnes
Speed of service winch	: 0-40 mtr/min.
Dieseleengine	: CATERPILLAR
Engine power	: 300 hp at 2100 rpm
Hydraulic pumps	: Rexroth plunger
Valve blocks	: Rexroth
Electric system	: 24 Vdc
Trackparts	: BERCO
Type of undercarriage	: D4E
Transport length (no folding system)	: 19.600 mm
Transport height (with WG-8)	: 3.450 mm
Transport width	: 3.000 mm
Operating width	: 3.600 mm
Length of undercarriage	: 4.000 mm
Standard trackplate width	: 900 mm
Counterweight	: 3,0 tonnes
Machineweight with WG-8	: 30 tonnes

THW WG-8 ROTARY HEAD

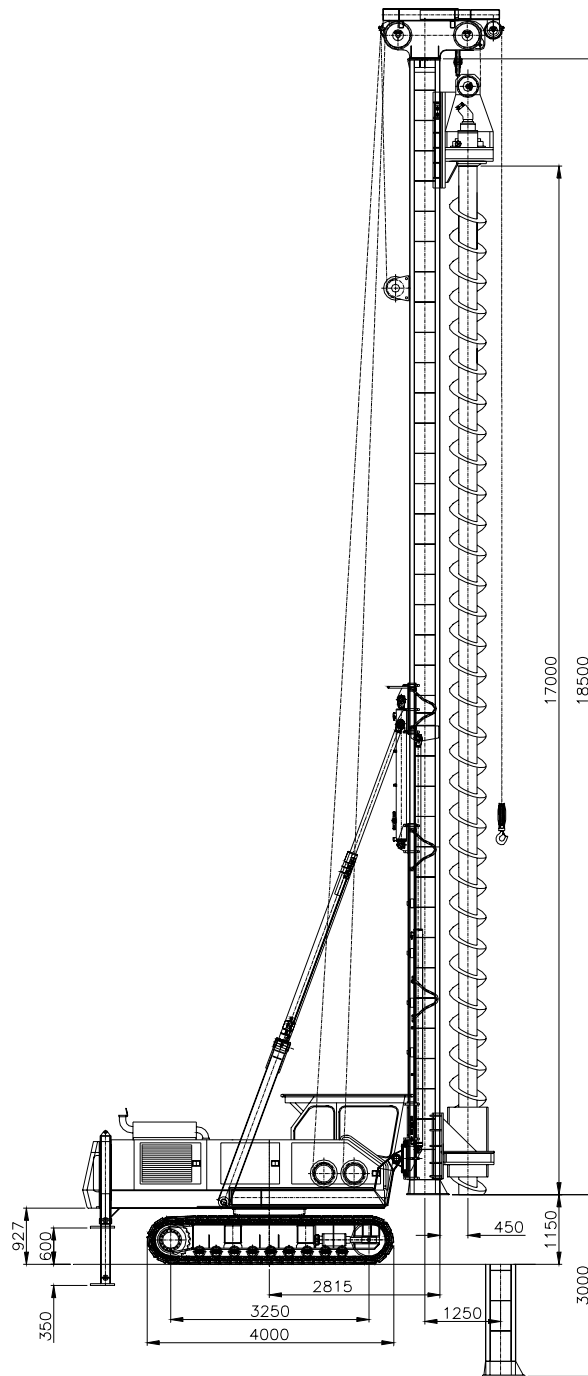


Maximum torque	: 8 TM
Maximum speed without load	: 0-30 Rpm
Output shaft (standard)	: 340 mm
Maximum working pressure	: 300 Bar
Maximum oilflow	: 350 Ltr/min.
Height	: 1.575 mm
Depth	: 1.080 mm
Width	: 1.115 mm
Minimum stand off	: 450 mm
Weight WG-8	: 2.400 kg



FOUNDATION RIGS AND CRAWLER CRANES

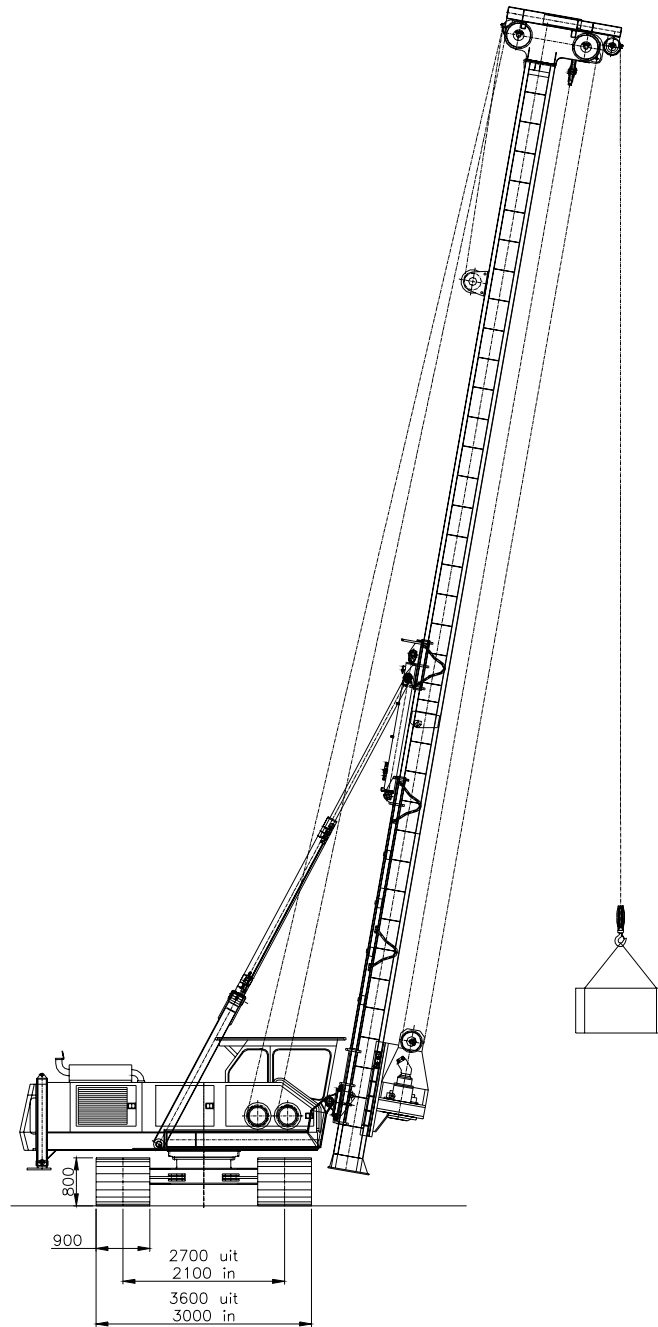
THW 3017-D





FOUNDATION RIGS AND CRAWLER CRANES

THW 3017-D





FOUNDATION RIGS AND CRAWLER CRANES

THW 3017-D

