

BROCHURE

THW 4017 PILING RIG

WWW.WOLTMANBV.COM



FOUNDATION RIGS AND CRAWLER CRANES

THW 4017

GENERAL INFORMATION

The THW 4017 is a light and compact piling rig with a total weight of approximately 37 tonnes without a hydraulic hammer. The THW 4017 can be used for both prefab and wooden piles but also pre-drilling jobs are no problem for this machine. The compact measurements enable the THW 4017 to perform jobs on hard to reach jobsites. The machine is fitted with a self erecting leader, which reduces the set up time of the rig considerably and makes it extremely mobile.

UNDERCARRIAGE

The THW 4017 is equipped with a D6 undercarriage (H-shaped construction) with BERCO trackparts. The standard trackplates are 900 mm wide and optional the trackplates can be covered with a smooth plate. Smooth plates however increase the total weight of the rig. The undercarriage can be hydraulically extended from 3.30 metres to 4.10 metres and the hydraulic track drives are O & K planetary gears.

LEADER

The leader of the THW 4017 has a standard length of 21,8 metres and the main dimensions are 600 x 600 mm. Optional is a 3 metre extension which enables the machine to reach it's maximum leader length of 24,8 metres. The V-shaped leader head is fitted with 6 steel sheaves and the leader foot can be taken off by means of a pin. The slide frames of the leader are fitted with PA wear strips, which are easy to replace. For reducing the transport length of the THW 4017 the leader a hydraulic folding system will be mounted on the leader.

DIESELENGINE AND HYDRAULIC SYSTEM

The standard engine in the THW 4017 is a CATERPILLAR 3126B ATAAC of 225 Hp at 2200 Rpm. This engine meets the latest environmental regulations (Stage 2/TIER 2). With the Caterpillar engine is also an original Caterpillar radiator which is suited for tropical conditions. This guarantees sufficient cooling at all conditions.

The hydraulic system is powered by Rexroth pumps and Rexroth valve blocks. As an option the hydraulic system can be filled with biodegradable oil. The hydraulic system is suited for powering a hydraulic hammer with a 4 or 5 tonne dropweight.

WINCHES

The THW 4017 is equipped with the following hydraulic winches :

WINCH TYPE	LINE-PULL	SPEED	PARTS	DRUM	ROPE DIA.
Hammer winch	10,0 tonnes	0-30 mtr/min.	1	Woltman	19 mm
Pile winch	6,0 tonnes	0-30 mtr/min.	1	Woltman	19 mm
Service winch	3,0 tonnes	0-30 mtr/min.	1	Compl. winch	16 mm

Optionally both the hammer and the pile winch can be changed into free-fall winches, which are controlled by a PLC system.



FOUNDATION RIGS AND CRAWLER CRANES

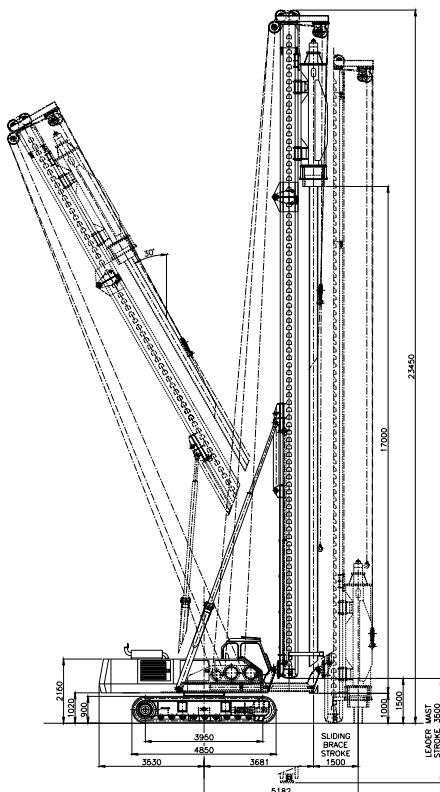
CABINS AND OTHER SPECIFICATIONS

The operator's cabin of the THW 4017 has enough room and will be arranged ergonomically. The operator's seat is of a good quality and has built-in joysticks for controlling the rig. Standard control of the rig is by means of hydraulic joysticks (electric control is optional). All instruments in the operator's cabin are easy to oversee and the standard equipment consists of :

- An Inclinometer
- A MFA-system for monitoring temperatures, pressures and tank contents
- A Blaupunkt Radio/CD player
- An adjustable heating system (Airconditioning is optional)

The engine compartments are easily accessible and als easy to dismount. In order to reduce the engine noise, all cabin parts will be fitted with sound isolating foam. All cabins will also be fitted with inner illumination and on the outside of the rig several working lights will be mounted. The complete rig will be painted in your company colours. The THW 4017 has a sliding brace with a stroke of 1500 mm for spotting on the pile position. For extra stability two outriggers are fitted in the counterweight. With the help of the leader and both of the outriggers the machine can be lifted off the ground and the undercarriage can be rotated freely, which is ideal for taking difficult corners and loading the machine on a low loader.

TECHNICAL SPECIFICATIONS THW 4017 PILING RIG

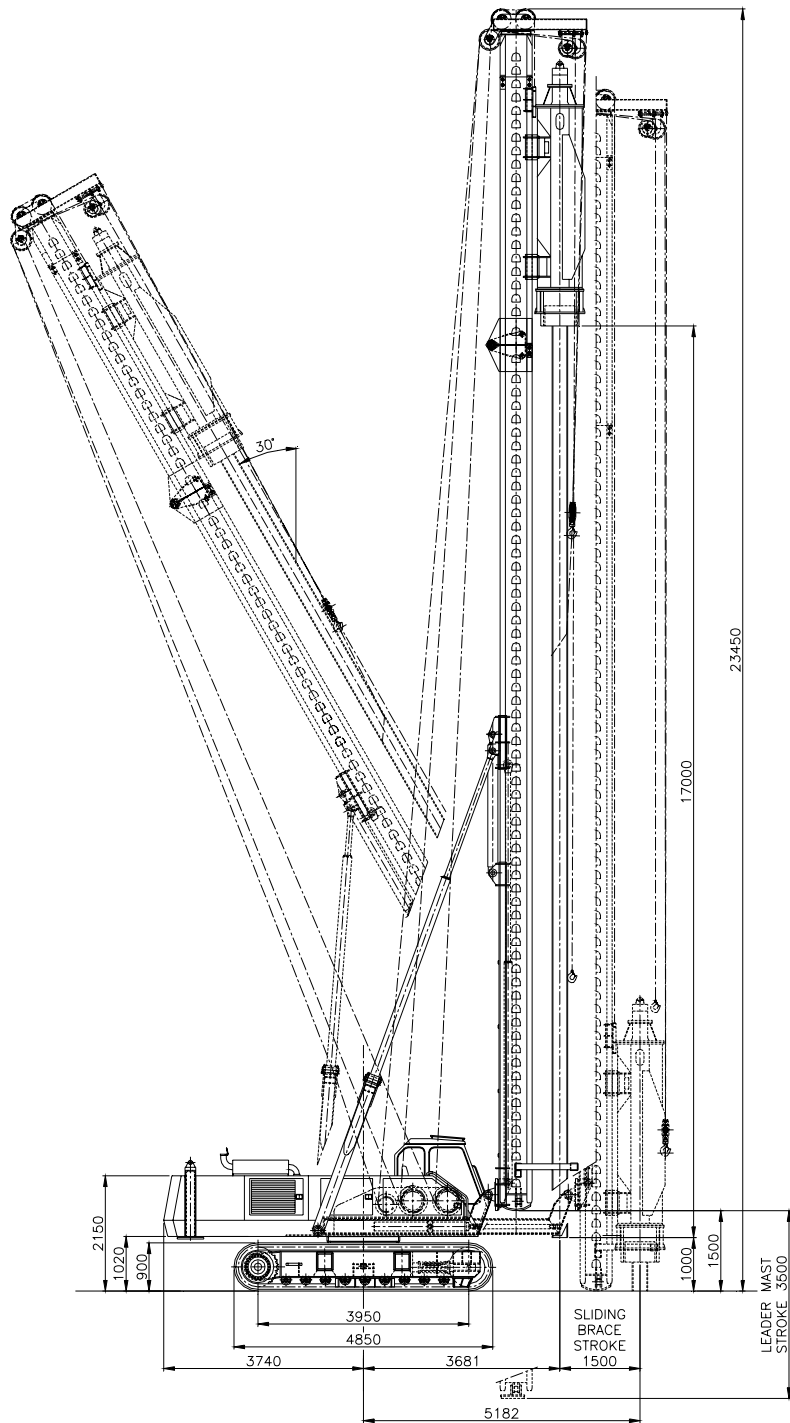


Maximum capacity (pile + hammer)	: 13,0 tonnes
Standard leader length	: 21,80 meter
Maximum leader length	: 24,80 meter
Main dimensions of leader	: 600 x 600 mm
Leader stroke	: 3.500 mm
Stroke of spotting device	: 1.500 mm
Capacity of hammer winch	: 10,0 tonnes (1 part)
Speed of hammer winch	: 0-30 mtr/min.
Capacity pile winch	: 6,0 tonnes (1 part)
Speed of pile winch	: 0-35 mtr/min.
Capacity of service winch	: 3,0 tonnes
Speed of service winch	: 0-30 mtr/min.
Dieselenigne	: Caterpillar
Engine power	: 225 Hp at 2200 rpm
Hydraulic pumps	: Rexroth plunger
Valve blocks	: Rexroth
Electric system	: 24 Vdc
Trackparts	: BERCO
Type of undercarriage	: D6
Transport length	: 17.000 mm
Transport height (without hammer)	: 3.500 mm
Transport width	: 3.300 mm
Operating width	: 4.100 mm
Length of undercarriage	: 4.850 mm
Standard trackplate width	: 900 mm
Counterweight	: 5,4 tonnes
Machineweight without hammer	: 37 tonnes



FOUNDATION RIGS AND CRAWLER CRANES

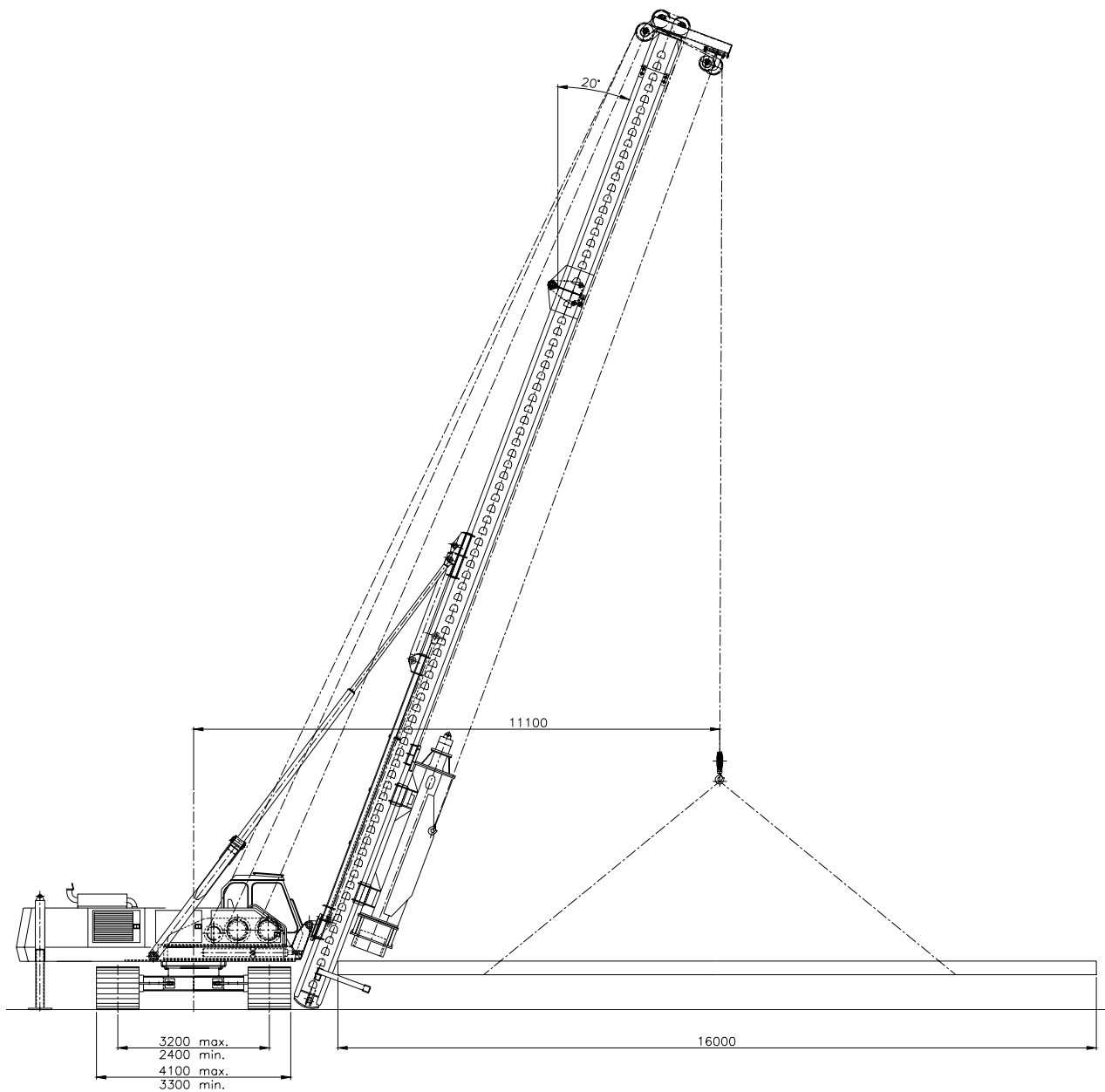
THW 4017





FOUNDATION RIGS AND CRAWLER CRANES

THW 4017





FOUNDATION RIGS AND CRAWLER CRANES

THW 4017

