

BROCHURE

THW 7528-D DRILLING RIG

WWW.WOLTMANBV.COM



FOUNDATION RIGS AND CRAWLER CRANES

THW 7528-D

GENERAL INFORMATION

The THW 7528-D is a hydraulic drilling rig with a total weight of 85 tonnes including a rotary head. The standard rotary head on a THW 7528-D is a WG-40 (40 TM), which can be used for heavy drilling jobs with mostly displacement piles. On request the THW 7528-D can also be adapted for piling activities.

UNDERCARRIAGE

The THW 7528-D has a D6C undercarriage (H-shaped construction) with BERCO trackparts. The undercarriage can be hydraulically extended from a transport width of 3.480 mm to a operating width of 4.800 mm and the width of the 3-rib trackplates is 900 mm. Each trackframe can be extended separately. The undercarriage is driven by O & K Planetary Gears.

LEADER

The fully closed leader of the THW 7528-D has a standard length of 30,0 metres and the main dimensions are 900/720 x 600 mm. For drilling up to 28 metres depth a 3 metre leader extension can be delivered with the machine as an option, so the total leader length will reach 33,0 metres. The leader is suited for a maximum torque of 40 TM over it's full length and the maximum extraction force over the leader head is 80 tonnes. The leader is also fitted with a leader head, which can be tilted backwards in order to reduce the transport height.

ENGINE AND HYDRAULIC SYSTEM

The power unit comprises a CATERPILLAR C-18 diesel engine producing 765 Hp (562 Kw) at 2100 Rpm with three Rexroth hydraulic pumps and REXROTH valve blocks. The hydraulic system is "Open Loop". Control of the rig is by means of hydraulically operated joysticks in the operator's cabin. When required the hydraulic system can be filled with biodegradable oil (option).

WINCHES

The THW 7528-D is equipped with the following winches :

WINCH TYPE	LINE-PULL	SPEED	PARTS	DRUM	ROPE
Main winch	10,0 tonnes	0-60 mtr/min.	8	LEBUS	24 mm
Pull-down	10,0 tonnes	0-15 mtr/min.	2	Standard	22 mm
Service winch	6,0 tonnes	0-30 mtr/min.	1	Compl. winch	19 mm
Casting winch (option)	5,0 tonnes	0-30 mtr/min.	1	Compl. winch	19 mm
Liftwinch (option)	0,6 tonnes	0-25 mtr/min.	1	EMCE H-2000	10 mm

CABINS AND OTHER SPECIFICATIONS

The operator's cabin of the THW 6527-D has enough room and will be arranged ergonomically. The operator's seat is of a good quality and has built-in joysticks for controlling the rig. Standard control of the rig is by means of hydraulic joysticks (electric control is optional).



FOUNDATION RIGS AND CRAWLER CRANES

All instruments in the operator's cabin are easy to oversee and the standard equipment consists of :

- An Inclinometer
- A MFA-system for monitoring temperatures, pressures and tank contents
- A Blaupunkt Radio/CD player
- An adjustable heating system (Airconditioning is optional)

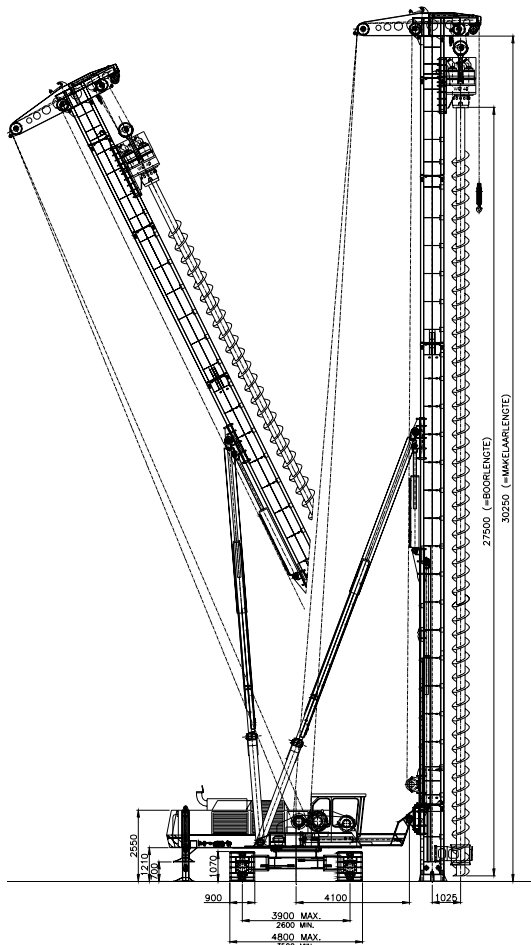
The engine compartments are easily accessible and als easy to dismount. In order to reduce the engine noise, all cabin parts will be fitted with sound isolating foam. All cabins will also be fitted with inner illumination and on the outside of the rig several working lights will be mounted. The complete rig will be painted in your company colours.

The THW 7528-D has a sliding brace with a stroke of 1.500 mm for spotting on the pile position. The counterweight is fixed and in the counterweight two outriggers have been mounted. With the help of the rear outriggers and the leader the machine can be lifted off the ground and the undercarriage can be freely rotated. This makes the loading of the THW 7528-D on a low loader a lot easier.



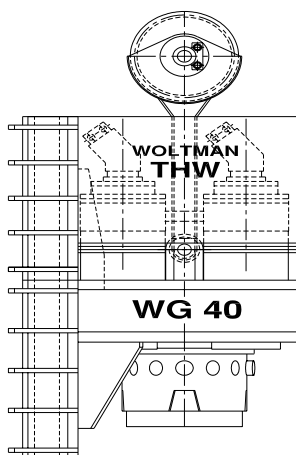
FOUNDATION RIGS AND CRAWLER CRANES

TECHNICAL SPECIFICATIONS THW 7528-D AND WG-40



THW 7528-D DRILLING RIG

Standard leader length	: 30,00 metres
Maximum leader length	: 33,00 metres
Main dimensions of leader	: 900/720 x 600 mm
Stroke of leader	: 4.500 mm
Stroke of spotting device	: 1.500 mm
Capacity of main winch	: 10,0 tonnes
Speed of main winch	: 0-60 mtr/min.
Capaciteit of pull-down winch	: 10,0 tonnes
Speed of pull-down winch	: 0-15 mtr/min.
Capacity of service winch	: 6,0 tonnes
Speed of service winch	: 0-30 mtr/min.
Dieseleengine	: CATERPILLAR
Engine power	: 765 hp at 2100 rpm
Hydraulic pumps	: Rexroth plunger
Valve blocks	: Rexroth
Electric system	: 24 Vdc
Trackparts	: BERCO
Type of undercarriage	: D6C
Transport length	: 23.500 mm
Transport height (with WG-40)	: 3.500 mm
Transport width	: 3.500 mm
Operating width	: 4.800 mm
Length of undercarriage	: 5.600 mm
Standard trackplate width	: 900 mm
Counterweight	: 10,0 tonnes
Machineweight with WG-40	: 85 tonnes



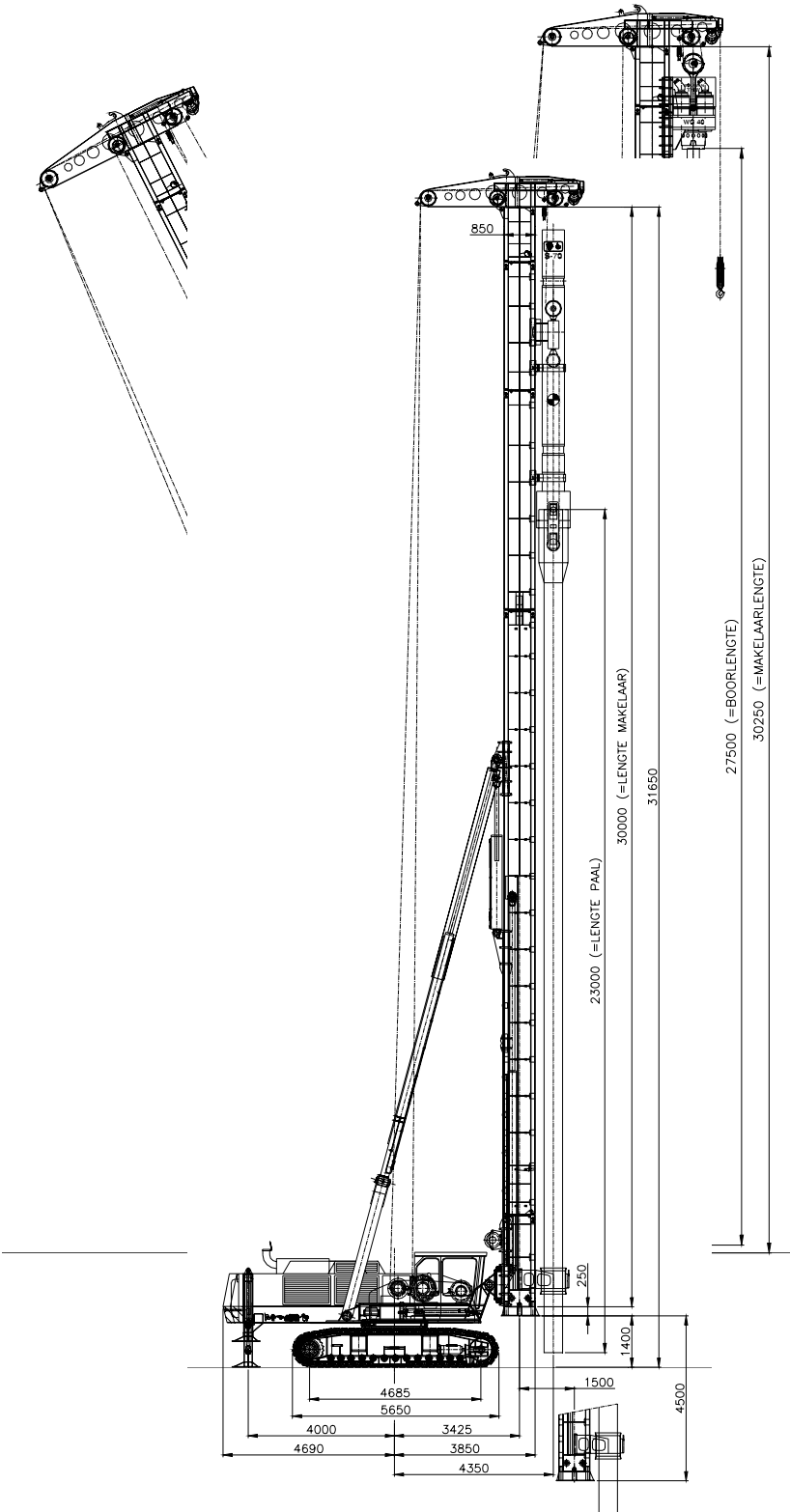
THW WG-40 ROTARY HEAD

Maximum torque	: 40 TM
Maximum speed without load	: 0-16 Rpm
Output shaft	: 500 mm
Maximum working pressure	: 350 Bar
Maximum oilflow	: 800 ltr/min.
Height	: 2.000 mm
Width	: 1.650 mm
Depth	: 1.150 mm
Minimum stand off	: 600 mm
Weight WG-40	: 8,0 tonnes



FOUNDATION RIGS AND CRAWLER CRANES

THW 7528-D





THW 7528-D

