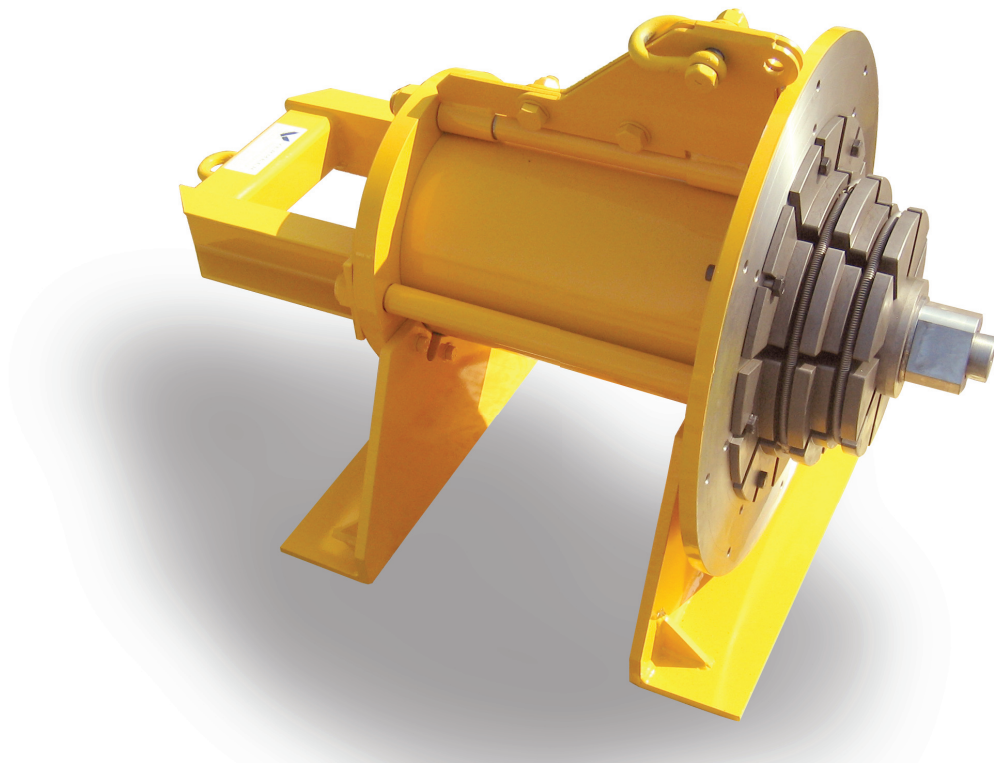


Auxiliary Equipment Swaging Units



Auxiliary Equipment

Features:

- Two separate product lines; standard (TU) and wide range (TU-WR)
- Robust and compact machine
- One segment set can swage two pipe diameters (TU-WR)

Advantages:

- Use of segment sets (TU-WR) saves changing segments between most commonly used tube combinations
- Less labour costs

Benefits:

- Less costs per meter

Swaging machine TU-series

Additionally to the well known piling machines Vermeer MT also supplies auxiliary equipment. Examples are the Easy Cutter (pipe cutting system), drop weights (750 – 4000 kg class, with or without connections), tubes (114 up to 508 mm) and swaging machines.

Swaging machines expand tubes in such a way that the original tube size fits into the swaged end giving the connection a high quality after welding it. It also saves labour against other coupling methods like connection rings.

The TU-series Vermeer MT swaging machines can be supplied as Standard and as a Wide Range model.

Both systems are suitable for swaging pipes that are regularly used in the foundation industries.



The standard TU-series has four swaging segments to swage tubes with a maximum wall thickness of 8 mm.

The TU-WR (Wide Range) units are equipped with swage segments suitable for two diameters per set. The most important difference against the standard series is the 8-segment pressing segment giving a better round shape after swaging tubes with wall thicknesses up to 8 mm.

The TU-series can either be used as a mobile unit connected to the piling machines hydraulics or as a static part of a pipe cutting – swaging line.

Technical Information:

TU-series standard

Swaged length 50 mm
Working pressure 250 bar

Models:

TU-139 for diameters $\varnothing 101.6$, $\varnothing 114.3$ and $\varnothing 139.7$ mm

Wall thickness (max) 4 mm

TU 273 for diameters $\varnothing 168.3$, $\varnothing 219.1$ and $\varnothing 273.0$ mm

TU 323 for diameters $\varnothing 219.1$, $\varnothing 273.0$ and $\varnothing 323.9$ mm

TU 406 for diameters $\varnothing 323.9$, $\varnothing 355.6$ and $\varnothing 406.4$ mm

TU 508 for diameters $\varnothing 406.4$, $\varnothing 457.0$ and $\varnothing 508.0$ mm

Wall thickness (max) 8 mm

TU- Wide Range

Swaged length 40 mm
Working pressure 250 bar

Models:

WR-1 $\varnothing 168.3$ and $\varnothing 219.1$ mm

WR-2 $\varnothing 273.0$ and $\varnothing 323.9$ mm

WR-3 $\varnothing 355.6$ and $\varnothing 406.4$ mm

WR-4 $\varnothing 457.0$ and $\varnothing 508.0$ mm

Wall thicknesses (max) 8 mm

Oilflow required.

For all models suitable hydraulic power packs are available as well.



Notice: All technical specifications are subject to changes without prior notice.