

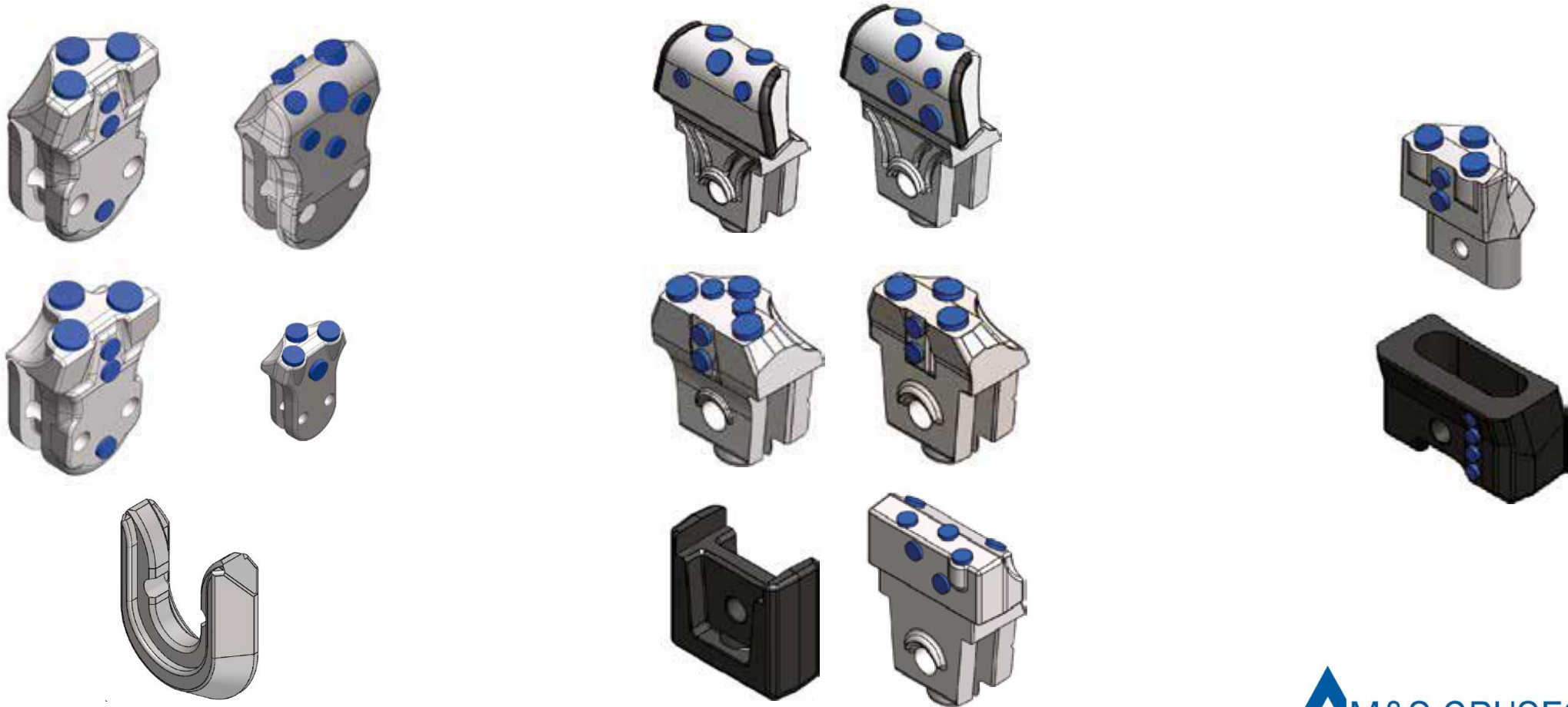


# FOUNDATION DRILLING

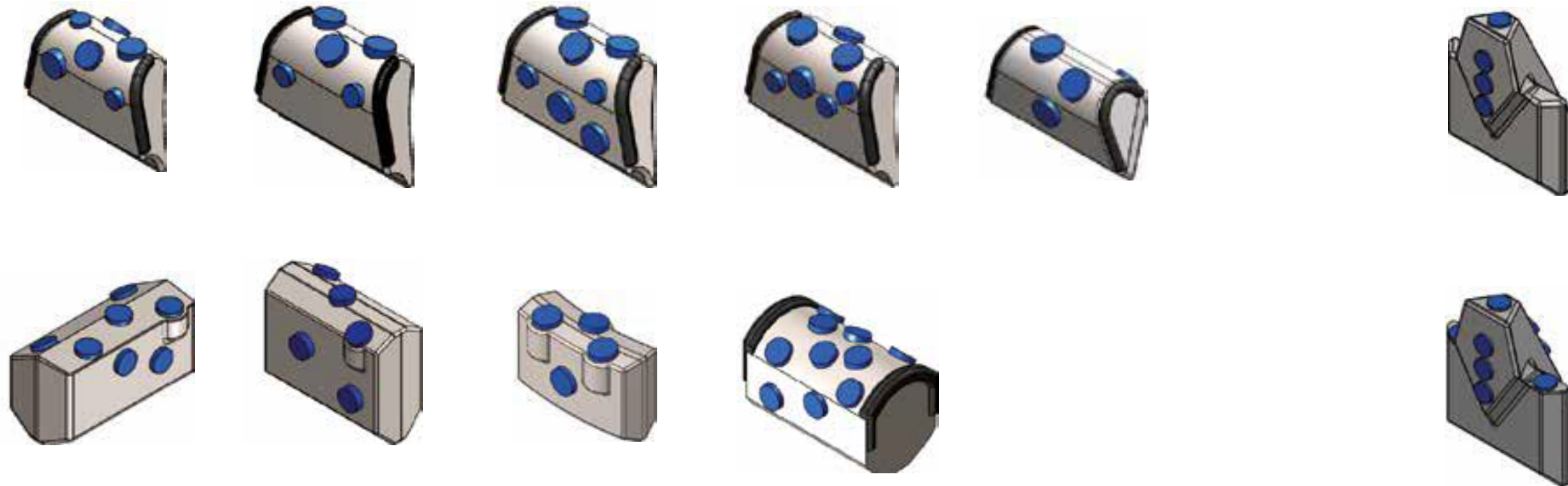
**TOOLS BY M&S  
GRUSECK /XCAL**

16.10.2020

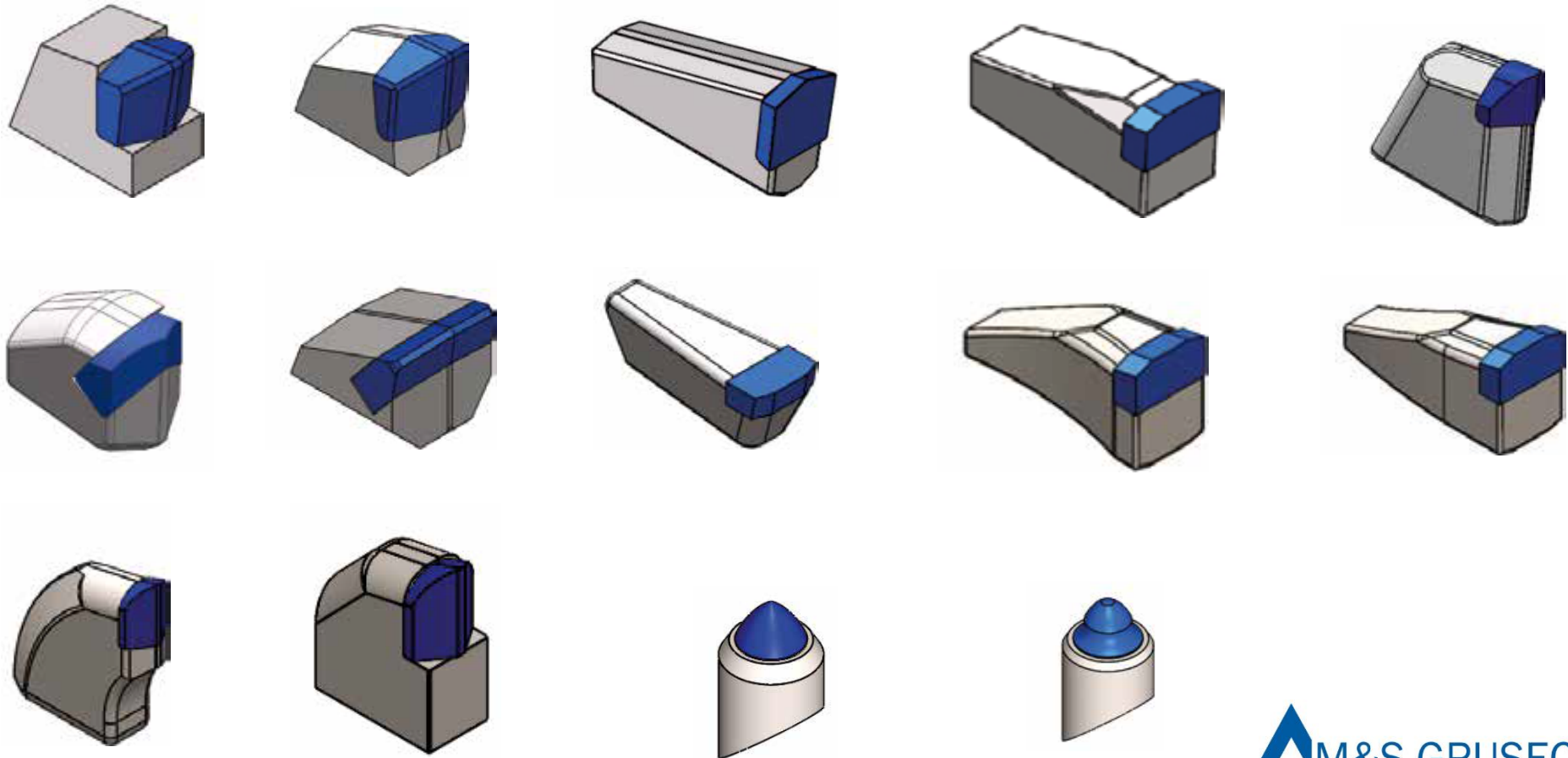
# TOOLS – QUICK CHANGETOOLS



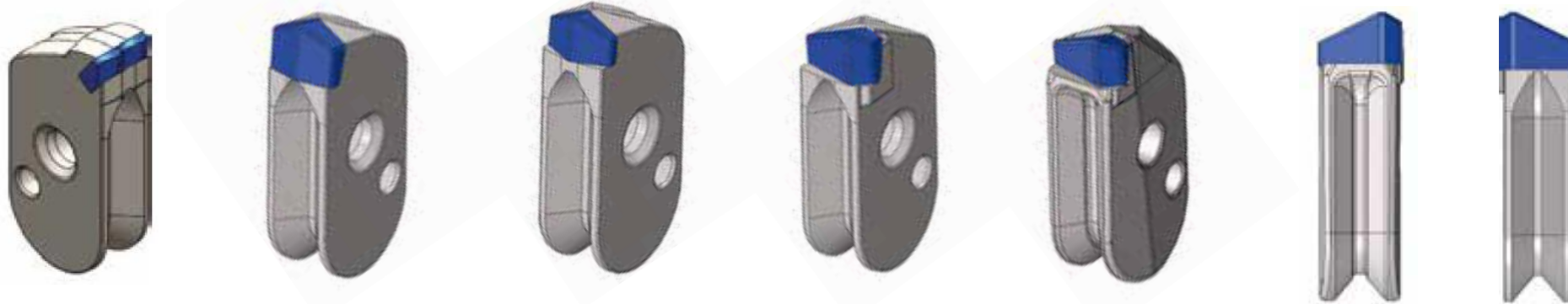
# TOOLS – WELD ON BARS



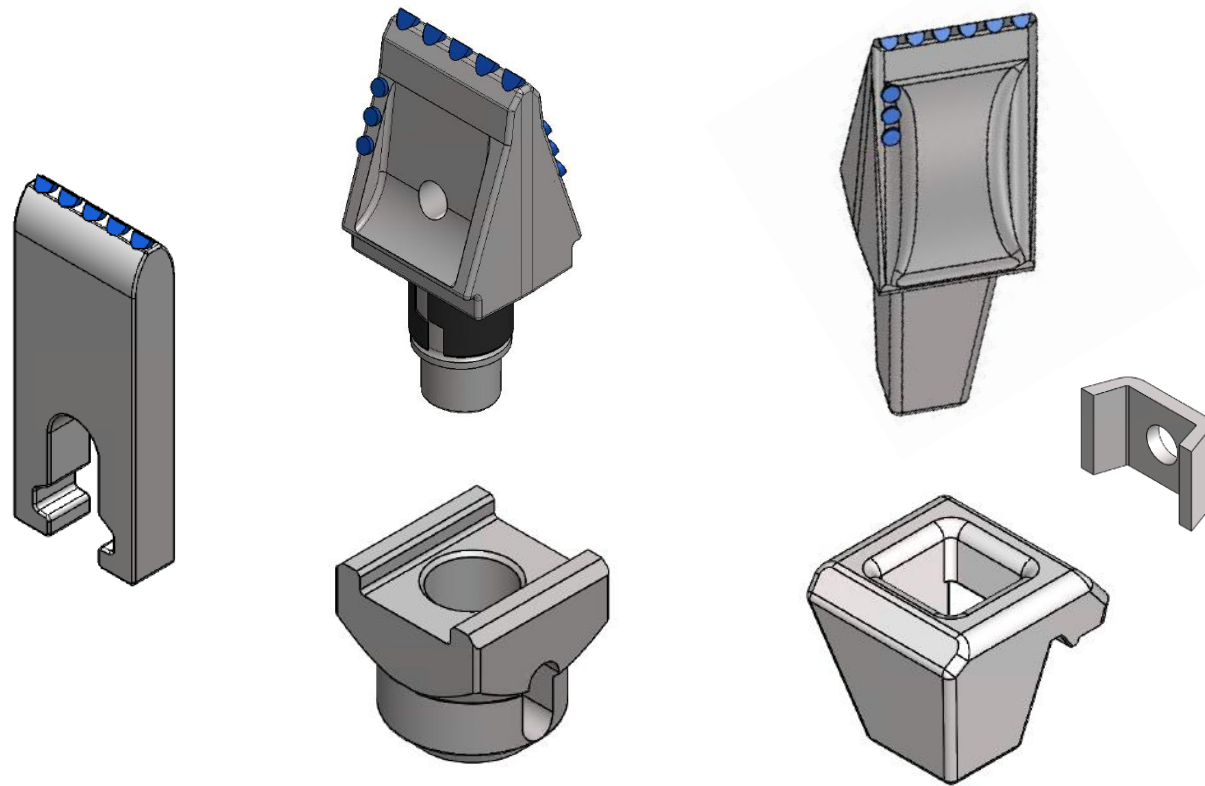
# TOOLS – WELD ON TEETH



# TOOLS - TRENCH WALL CUTTER



# TOOLS - FLATTEETH





# TOOLS - CONICALS



# MARKET OVERVIEW – MACHINES AND COMPETITION

## **Drill Rigs (Bauer, Soilmec, Liebherr, CAT, Delmag, Casagrande, Mait):**

- Tools for core barrels: Weld on bars, quick change teeth, screw connectors
- Tools for Augers: Conicals, Flat Teeth

## **Trench Wall Cutter (Bauer, Liebherr, Soilmec):**

- Tools for Trench Wall Cutter: Trench Wall Cutter Teeth, Conicals

## **Competitors**

- Betek / Bauer (Betek as well), else is mainly Chinese



# TOOL SELECTION FACTS

- Size and application
- Rock type, strength, hardness, abrasivity
- Tool geometry, material and working condition
- Machine size, drilling/excavation equipment
- Cutting equipment geometry, bit spacing, lacing arrangement
- Space available on the cutting equipment – Tool quantities
- Cost of tools and their wear life

# WHY M&S GRUSECK TOOLS - BENEFITS

**HIGHEST QUALITY - MADE IN GERMANY**

**BEST PRICE - PERFORMANCE RATIO**

**FULL PRODUCT LINE**

**PRODUCTION, WAREHOUSE & LOGISTICS INHOUSE**

**SHORT LEADTIMES IN EUROPE**

**CUSTOMER & APPLICATION ORIENTED**

**CUSTOM SOLUTIONS POSSIBLE**

**ALTERNATIVE TO BAUER / BETEK**



VISIT OUR WEBSITE & DOWNLOAD OUR CATALOGUES

