

 **6133R**

SENEBOGEN

PRELIMINARY



 **164 kW (Stage IIIa)**
186 kW (Stage V)

 **130 t**

 **52.2 m + 15 m**

 **MAX CAB**

6133E

Telescopic crawler crane

Stage V

6133E Advanced. The E-Series



Telescopic crane TX10-1982

What makes up the E-Series

- Over 30 years of experience in designing and constructing highly specialized telescopic crawler cranes
- Uncompromisingly high performance in all areas
- Technology that can be mastered: High-quality components without over-engineering
- Long service life and high value retention

Your top benefits

1

Green Efficiency

Save fuel - reduce operating costs
Work quietly - protect operator and environment



2

Top-level performance

Robust boom system - operates up to a 4° tilt
2 equivalent crane winches - high cable speed

3

Maximum usability

Maxcab comfort cab - work in comfort
SENCON - work program selection made easy



4

Flexible operation

Drive with a full load - small space requirements
Strong undercarriage traction - good off-road mobility

5

Easy to transport

Telescopic undercarriage - quickly deployable

6

Maintenance and service made easy

SENNEBOGEN control system - easy diagnosis
Simple maintenance - clear labeling

7

Consultation and support in your area

3 production sites - 2 subsidiaries
150 sales partners - over 350 service stations



- Stage V**
- Most modern, powerful engine
 - Fuel efficient
 - Cleaner emissions

6133E Technical data, equipment

MACHINE TYPE

Model (type) **6133**

ENGINE

Model	Cummins diesel engine B 6.7 186 kW / 253 hp at 2000 min⁻¹ Stage V emissions
	Cummins diesel engine QSB 6.7 164 kW / 223 hp at 2000 min⁻¹ Stage IIIa emissions
	Direct injection, turbocharged, charge air cooling, reduced emissions
Cooling	water-cooled
Diesel filter	with water separator and heater
Air filter	Dry filter with integrated pre-separator, automatic dust discharge, main element and safety element, contamination indicator
Fuel tank	450 l
DEF tank	45 l
Electr. system	24 V
Batteries	2 x 155 Ah battery disconnect switch
Option	<ul style="list-style-type: none"> ▪ Electric fuel pump

UPPERCARRIAGE

Design	Torsion-resistant box design, precision crafted, steel bushings for boom mountings. Very service-friendly design, engine installed in the longitudinal direction
Electrical system	central electrical distributor, battery disconnect switch
Cooling system	3-circuit cooling system with high cooling output, thermostatically regulated fan drive for oil cooler, electronically regulated water and charge air cooler
Safety	Camera monitoring of the rear area and right side, LED lighting packages, folding uppercarriage railing
Options	<ul style="list-style-type: none"> ▪ Additional LED headlamps ▪ Up to 2 additional cameras ▪ Anti-corrosive maritime climate varnish ▪ Low-temperature package for use at temperatures below -20 °C

Options

- Automatic Central lubrication for boom attachment point, luffing cylinder, live ring track and winch drum bearings
- Automatic Pinion tooth lubrication for slewing ring



HYDRAULIC SYSTEM


Load-sensing/ LUDV hydraulic system, electro-hydraulic work functions, load limit control	
Pump type	Swash plate-type variable-displacement piston pump, load pressure-independent flow distribution for simultaneous, independent control of work functions
Pump control	Zero-stroke control, on-demand flow control – the pumps only pump as much oil as will actually be used, pressure purging, load limit control
Operating pressure	up to 330 bar
Filtration	High-performance filtration with long change interval
Hydraulic tank	900 l
Control system	Proportional, precision electro-hydraulic actuation of work movements, 2 hydraulic servo joysticks for the work functions incl. winch motion detector via vibration transmitter, additional functions via switches and foot pedals
Safety	Hydraulic circuits safeguarded with safety valves Pipe-fracture safety valves for luffing cylinder and telescopic cylinder
Options	<ul style="list-style-type: none"> ▪ Bio-oil filling ▪ 3 µm hydraulic micro-filter SENNEBOGEN HydroClean ▪ Electric hydraulic tank preheating for temperatures below -20 °C

SLEWING DRIVE


Gearbox	2 compact planetary gears with bent-axis hydraulic engine, integrated brake valves
Swing bearing brake	Spring-loaded multi-disk brake, foot pedal for individual brakes
Slewing ring	Externally geared slewing ring, sealed
Slewing speed	0-2 min⁻¹, variable

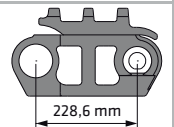
6133E Technical data, equipment


 CAB 	
Cab type	Spacious Maxcab, tiltable 20°
Cab equipment	Sliding door, sliding window in operator door, excellent ergonomics, automatic air conditioning, seat heater, air-suspension comfort seat, fresh air /circulating air filter, 12 V/24 V connections, SENCON, sunblind for skylight
Options	<ul style="list-style-type: none"> ■ Hydraulically elevating cab type E270, can elevate up to 2.70 m and tilt by 30° ■ Auxiliary heating system with timer ■ Activated-carbon filter for cab ■ Bullet proof windshield ■ Bullet proof skylight ■ FOPS protective roof grating ■ Radio with USB and SD connections, MP3 and Bluetooth functions ■ Work area limitation

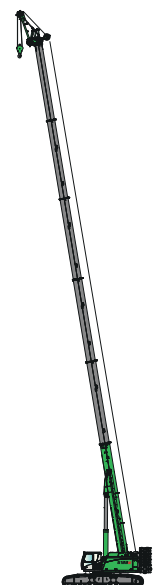
 EQUIPMENT	
Design	Decade-long experience, most advanced computer simulation, the greatest degree of stability and longest service life, large-scale mounting points and precision-crafted sealed low-maintenance special bushings
Telescopic boom	6-part telescopic boom made from high-strength fine-grain steel, consisting of a basic boom and 5 telescopic sections, 1 telescopic cylinder, can be hydraulically telescoped under partial load. Length: 12.3 bis 52.2 m
Hub winch	Bent-axis hydraulic engine drive with compact planetary gear, 120 kN tensile force, cable speed 0 - 115 m/min., cable diameter 26 mm, cable length 210 m. Winch motion detector via vibration transmitter in the joysticks
Safety brake	Spring-loaded multi-disk brake
Crane safety	Latest generation of load moment monitoring, clear operations panel showing all important data via the SENCON display, lifting limit switch, cable exit protection, pressure relief valves and burst pipe protection with event recorder
Cylinders	Hydraulic cylinders with high-quality sealing and guide elements
Options	<ul style="list-style-type: none"> ■ Fly boom 8 m, tiltable (0°, 20°, 40°), can be set up very quickly and easily without additional equipment, can be bolted to basic boom when not in use ■ Fly boom extension to 15 m (7 m extension), tiltable (0°, 20°, 40°), can be bolted to basic boom when not in use

Options	<ul style="list-style-type: none"> ■ Auxiliary boom: 12 t load capacity, 1-strand ■ 2. Crane winch: 120 kN tensile force, cable speed 0 -115 m/min., cable diameter 26 mm, cable length 210 m ■ Additional load charts accepted for 4° incline position ■ Electro-hydraulic emergency unit 7.5 kW ■ Radio remote control
---------	---

 UNDERCARRIAGE	
Design	Crawler undercarriage T119/540 with removable traveling gear. Stable welded construction.
Drive	Hydraulic travel drive for each traveling gear side, hydraulic travel engine
Parking brake	Spring-loaded, hydraulically ventilated disk brakes
Traveling gear	900 mm triple grouser shoes, maintenance-free tractor chassis
Speed	0 - 2.5 km/h
Options	900 mm flat track shoes



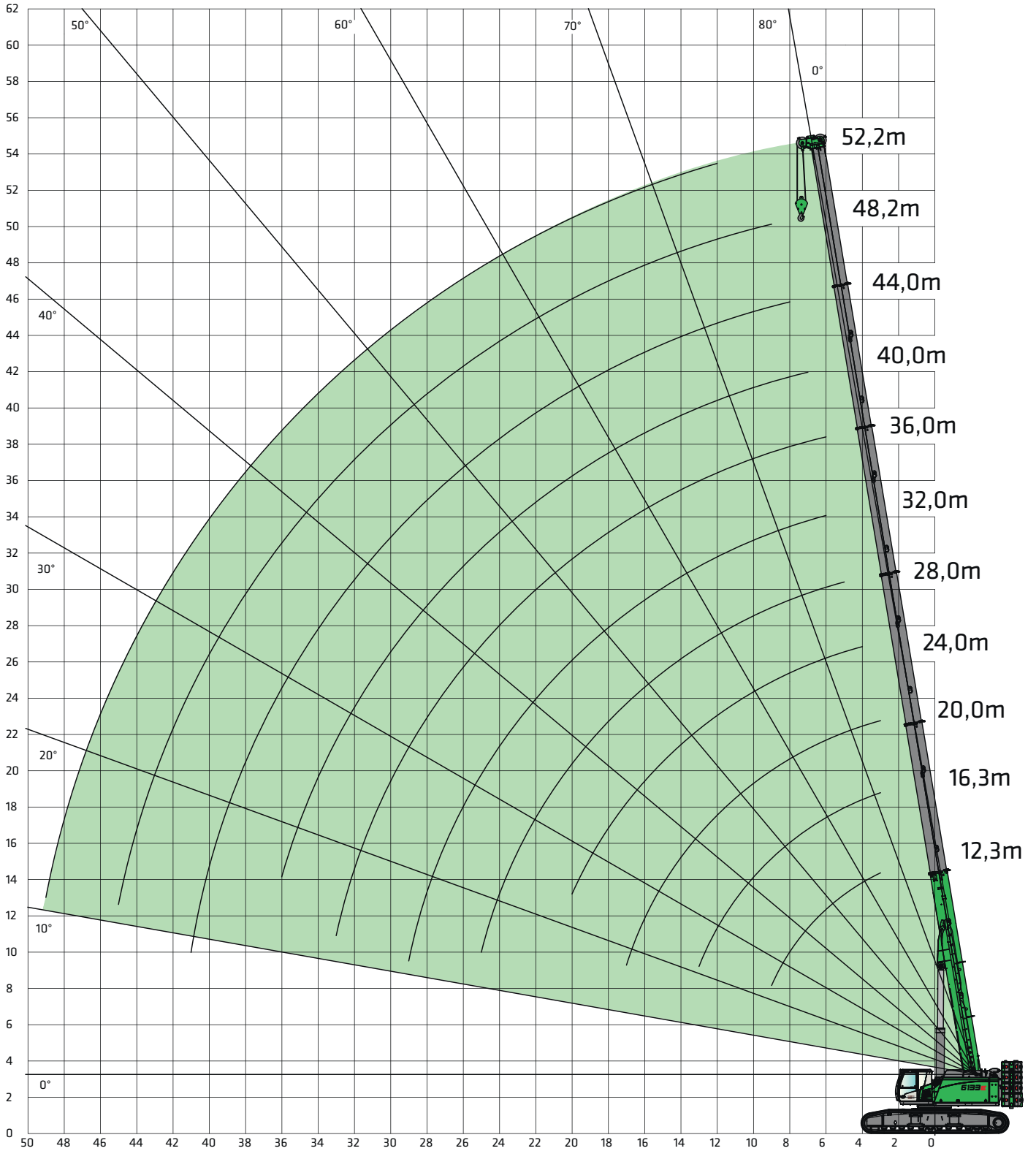
 OPERATING WEIGHT	
Mass	approx. 119.000 kg with telescopic boom 52.2 m, fly boom 8.0 m, 80 t hook, triple grouser shoes 900 mm, 2 hoist winches, with hydraulic telescoping undercarriage, ballast 35 t
Note	Operating weight varies with equipment.



6133E Crane equipment



Main boom HA 52.2 m



6133E Load ratings



Main boom HA 52.2 m



Reach [m]	Boom length [m]											
	12.3	16.3	20.0	24.0	28.0	32.0	36.0	40.0	44.0	48.2	52.2	
2.0												
3.0	130.0*	80.0	75.0									
4.0	111.0*	76.0	68.0	66.0								
5.0	90.0	72.0	65.0	58.0	55.0							
6.0	74.0	68.0	60.0	56.0	49.0	46.0	35.0					
7.0	62.0	62.0	55.0	53.0	47.0	42.0	33.0	25.0				
8.0	53.0	54.0	51.0	48.0	46.0	40.0	31.0	24.0	19.1			
9.0	47.0	46.0	47.0	45.0	43.0	39.0	29.5	23.0	18.6	14.5		
10.0		41.0	41.0	41.5	40.0	37.0	28.0	21.0	18.4	14.4		
12.0		32.0	34.0	34.2	33.9	33.0	25.4	19.0	16.6	14.2	11.8	
14.0		23.0	27.3	27.4	27.1	25.5	23.0	17.5	15.2	14.0	11.5	
16.0			22.4	22.5	22.3	21.0	21.2	16.0	14.1	13.3	11.3	
18.0				18.9	18.7	17.0	17.8	15.0	12.7	12.5	11.1	
20.0				16.2	15.9	15.0	15.1	14.0	11.8	11.7	10.9	
22.0					13.8	13.0	12.9	13.0	11.1	10.8	10.5	
24.0					12.0	11.0	11.1	12.0	10.4	10.0	9.9	
26.0						9.5	9.7	11.0	9.8	9.5	9.3	
28.0						8.5	8.4	9.5	9.2	8.9	8.7	
30.0							7.4	8.5	8.7	8.4	8.0	
32.0							6.7	7.7	7.5	7.6	7.1	
34.0								6.9	7.0	6.8	6.3	
36.0								6.1	6.5	6.1	5.6	
38.0									5.8	5.5	4.9	
40.0									5.3	4.9	4.3	
42.0										4.2	3.8	
44.0										3.9	3.3	
46.0											2.9	
48.0											2.4	
50.0												
Number of falls	10	10	8	6	6	4	4	4	2	2	2	
The load ratings must be reduced if using a direct-mounted 8 m fly boom on main body.												
Load capacity reduction [kg]	512	434	354	295	253	221	197	177	161	150	139	

Table no. 6133R-75/2790/35.3+0.0/09.18HA.0.3°

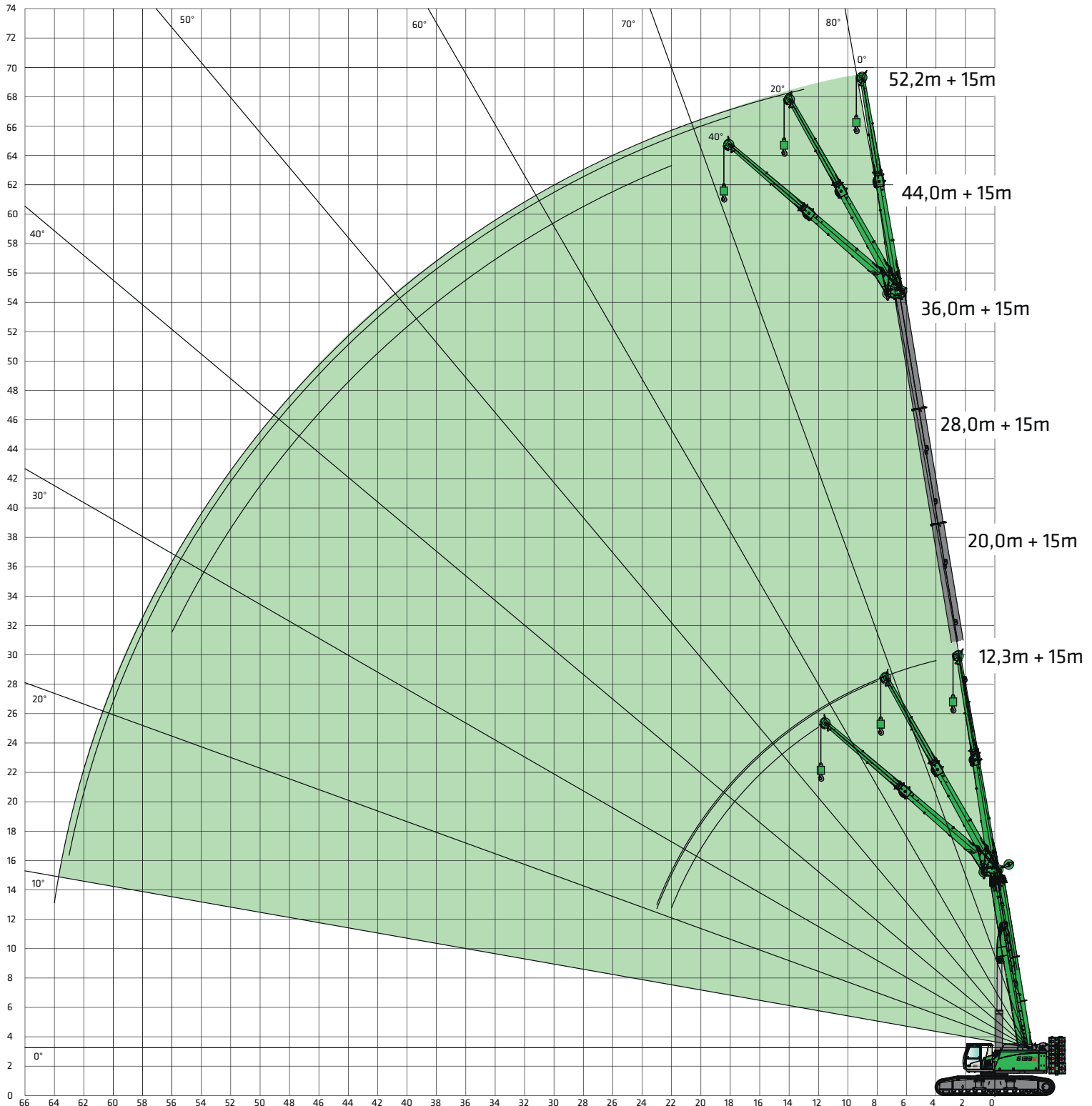
Notes:

- The load ratings given apply when the machine is on a firm and level surface ($\pm 0.3^\circ$).
- The load ratings are given in tonnes and apply 360 degrees.
- The load capacities correspond to EN13000.
- The weight of the load handling equipment (hooks, suspension gear) should be deducted from the load capacities.
- The load ratings apply for the maximum undercarriage track width (5.4 m).
- The load ratings apply for the bolted boom.
- Load capacities must be limited or reduced in adverse conditions such as soft or uneven ground, slopes, wind, side loads, swinging loads, jolts or sudden stopping of loads, personnel and operators not experienced in handling loads.
- Permissible cable pull per strand in crane mode for cable diameter 26 mm - 12,500 kg.
- The load ratings and boom lengths given are for reference only. Please refer to the tables in the operating instructions for the relevant applicable load ratings and boom lengths.
- Values marked with * only apply with special equipment.

6133E Crane equipment



Main boom HA 52.2 m + 15 m



8 Subject to technical changes.

6133E Load ratings



Main boom HA 52.2 m + 15 m



Reach [m]	Telescopic boom length [m]																	
	12.3			20.0			28.0			36.0			44.0			52.2		
	15.0			15.0			15.0			15.0			15.0			15.0		
	0°	20°	40°	0°	20°	40°	0°	20°	40°	0°	20°	40°	0°	20°	40°	0°	20°	40°
5.0	5.8																	
6.0	5.5			5.4														
7.0	5.2			5.3			4.9											
8.0	4.9	3.8		5.2			4.8											
9.0	4.6	3.7		5.0			4.7			4.4								
10.0	4.3	3.5		4.8			4.6			4.3			4.0					
12.0	3.8	3.2	2.6	4.4	3.4		4.5	3.4		4.2			3.9					
14.0	3.4	3.0	2.5	4.0	3.2		4.2	3.2		4.1	3.2		3.8			3.0		
16.0	3.1	2.8	2.4	3.7	3.0	2.5	3.9	3.0	2.5	3.9	3.1		3.7	3.1		3.0	2.9	
18.0	2.9	2.6	2.3	3.4	2.8	2.4	3.6	2.9	2.4	3.8	2.9	2.4	3.6	2.9		3.0	2.8	
20.0	2.7	2.5	2.2	3.1	2.7	2.4	3.4	2.7	2.4	3.6	2.8	2.4	3.5	2.8	2.4	3.0	2.7	2.3
22.0	2.5	2.4	2.2	2.9	2.6	2.3	3.2	2.6	2.3	3.4	2.7	2.3	3.4	2.7	2.3	3.0	2.6	2.2
24.0	2.4/23m	2.3/23m		2.7	2.4	2.2	3.0	2.5	2.2	3.2	2.6	2.3	3.3	2.6	2.3	3.0	2.5	2.2
26.0				2.5	2.3	2.2	2.8	2.4	2.2	3.0	2.5	2.2	3.1	2.5	2.2	3.0	2.5	2.2
28.0				2.4	2.3	2.2	2.7	2.3	2.2	2.9	2.4	2.2	3.0	2.5	2.2	2.9	2.4	2.1
30.0				2.3	2.2	2.2/29m	2.5	2.3	2.1	2.7	2.3	2.1	2.9	2.4	2.1	2.8	2.3	2.1
32.0				2.3/31m	2.2		2.4	2.2	2.1	2.6	2.2	2.1	2.7	2.3	2.1	2.8	2.3	2.0
34.0							2.3	2.2	2.1	2.5	2.2	2.1	2.6	2.3	2.1	2.7	2.2	2.0
36.0							2.2	2.1		2.4	2.2	2.1	2.5	2.2	2.1	2.6	2.2	2.0
38.0							2.2/37m	2.1		2.3	2.1	2.1	2.5	2.2	2.0	2.5	2.1	2.0
40.0										2.2	2.1		2.4	2.1	2.0	2.4	2.1	2.0
42.0										2.2	2.1		2.3	2.1	2.0	2.3	2.0	1.9
44.0										2.1	2.1		2.2	2.0	2.0	2.3	2.0	1.9
46.0										2.1	2.1		2.2	2.0	2.0	2.2	2.0	1.9
48.0													2.1	2.0	2.0	2.1	1.9	1.9
50.0													2.0	2.0		2.1	1.9	1.9
52.0													2.0	2.0		2.0	1.9	1.9
54.0													2.0	2.0		2.0	1.9	1.9
56.0																1.9	1.9	1.9
58.0																1.8	1.9	
60.0																1.6	1.6	
62.0																1.3	1.4	
64.0																1.1	1.3/63m	
Number of falls	2	2	2	2	2	2	2	2	2	2	2	2	2	2	2	2	2	2

Table no. 6133-15635x-0.3°/5.4m/12.18 SA.15

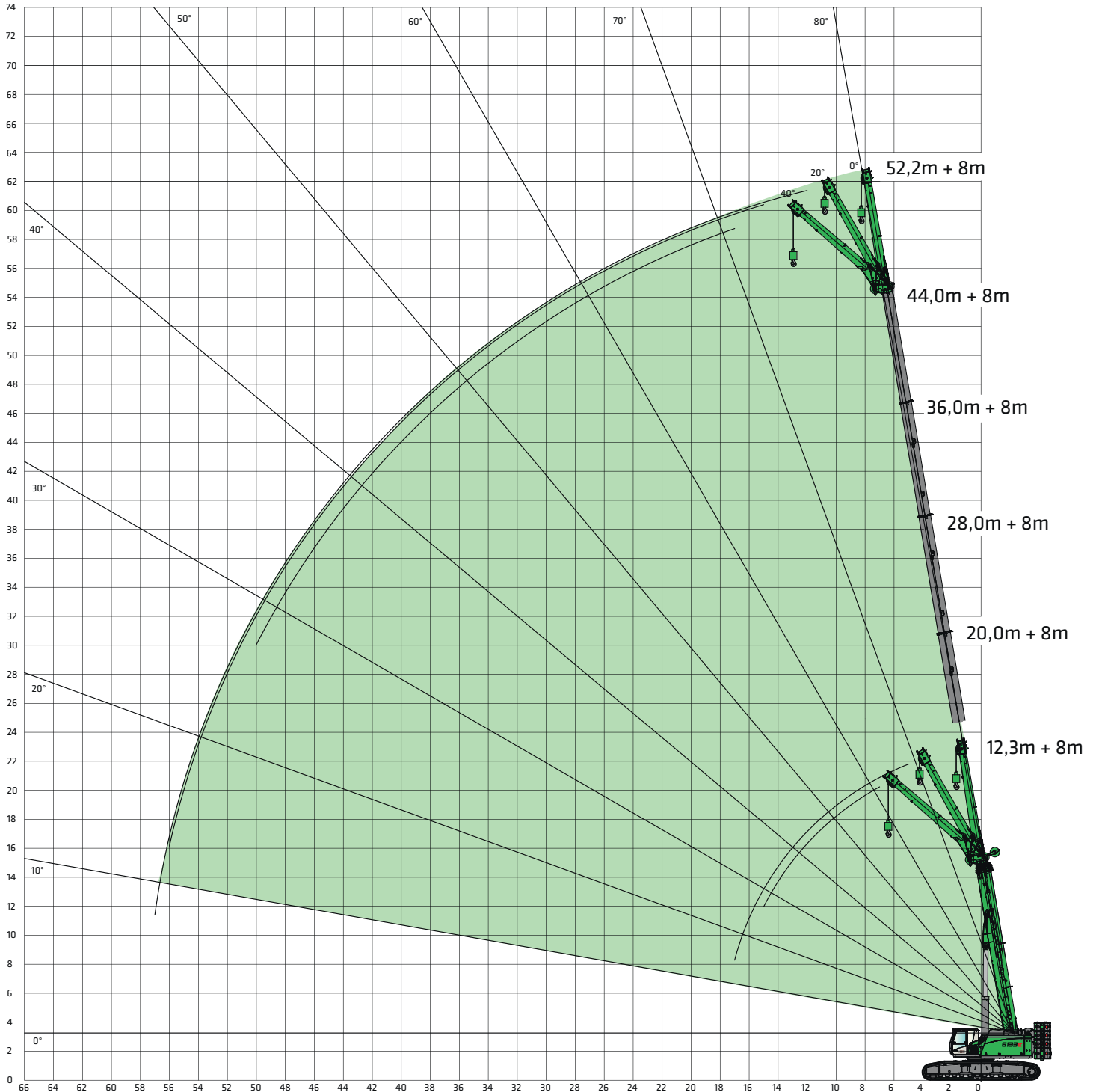
Notes:

1. The load ratings given apply when the machine is on a firm and level surface (± 0.3°).
2. The load ratings are given in tonnes and apply 360 degrees.
3. The load capacities correspond to EN13000.
4. The weight of the load handling equipment (hooks, suspension gear) should be deducted from the load capacities.
5. The load ratings apply for the track width.
6. The load ratings apply for the bolted boom.
7. Load capacities must be limited or reduced in adverse conditions such as soft or uneven ground, slopes, wind, side loads, swinging loads, jolts or sudden stopping of loads, personnel and operators not experienced in handling loads.
7. Permissible cable pull per strand in crane mode for cable diameter 26 mm - 12,500 kg.
8. The load ratings and boom lengths given are for reference only. Please refer to the tables in the operating instructions for the relevant applicable load ratings and boom lengths.
9. Values marked with * only apply with special equipment.

6133E Crane equipment



Main boom HA 52.2 m + 8 m



6133E Load ratings



Main boom HA 52.2 m + 8 m



Reach [m]	Telescopic boom length [m]																	
	12.3			20.0			28.0			36.0			44.0			52.2		
	8.0			8.0			8.0			8.0			8.0			8.0		
	0°	20°	40°	0°	20°	40°	0°	20°	40°	0°	20°	40°	0°	20°	40°	0°	20°	40°
5.0	14.2	10.3		14.9			14.0											
6.0	12.9	9.6		14.0	9.9		13.4											
7.0	11.9	9.0	7.2	13.0	9.5		12.8			11.4								
8.0	10.9	8.5	6.9	12.3	9.1	7.0	12.2	9.0		11.2								
9.0	10.2	8.0	6.7	11.6	8.7	6.9	11.7	8.8		10.9								
10.0	9.5	7.6	6.5	10.9	8.3	6.7	11.2	8.5	6.7	10.7	8.3		9.5			6.5		
12.0	8.2	6.9	6.1	9.9	7.7	6.4	10.3	8.0	6.5	10.0	7.9	6.4	9.2			6.5		
14.0	7.2	6.4	5.8	9.0	7.2	6.1	9.5	7.5	6.2	9.4	7.5	6.2	8.9	7.4	6.0	6.5	6.7	
16.0	6.4	6.1	5.7/15m	8.2	6.7	5.9	8.9	7.1	6.0	8.9	7.2	6.0	8.6	7.1	5.9	6.4	6.5	5.6
18.0		6.0/17m		7.4	6.4	5.7	8.3	6.7	5.8	8.5	6.9	5.8	8.2	6.8	5.7	6.4	6.3	5.4
20.0				6.9	6.1	5.5	7.8	6.4	5.6	8.0	6.6	5.6	7.9	6.6	5.6	6.4	6.1	5.3
22.0				6.4	5.9	5.4/21m	7.3	6.2	5.4	7.6	6.3	5.4	7.5	6.3	5.4	6.3	6.0	5.2
24.0				6.2/23m	5.9		6.8	6.0	5.3	7.2	6.1	5.3	7.2	6.1	5.3	6.3	5.8	5.1
26.0							6.5	5.8	5.2	6.9	5.9	5.2	6.9	5.9	5.2	6.2	5.6	5.0
28.0							6.1	5.7	5.2/27m	6.6	5.7	5.1	6.6	5.8	5.0	6.1	5.5	4.9
30.0							5.8	5.6		6.3	5.6	5.0	6.4	5.6	4.9	6.0	5.3	4.8
32.0							5.7/31m	5.4		5.9	5.5	4.9	6.2	5.5	4.9	5.8	5.2	4.7
34.0										5.6	5.4	4.9	5.9	5.4	4.8	5.6	5.1	4.6
36.0										5.2	5.2		5.7	5.3	4.7	5.4	5.0	4.6
38.0										4.9	4.9		5.4	5.2	4.7	4.9	4.9	4.6
40.0										4.8/39m	4.7		5.1	5.1	4.7	4.3	4.6	4.5
42.0													4.8	4.8	4.7	3.8	4.1	4.2
44.0													4.5	4.6		3.4	3.6	3.6
46.0													4.2	4.2		3.0	3.2	3.2
48.0													3.8	3.8		2.6	2.8	2.8
50.0													3.6/49m			2.2	2.4	
52.0																2.0	2.0	
54.0																1.7	1.7	
56.0																1.6/57m		
58.0																		
60.0																		
Number of falls	2	2	2	2	2	2	2	2	2	2	2	2	2	2	2	2	2	2

Table no. 15634x-0.3°/5.4m/35.0/12.18 SA 8

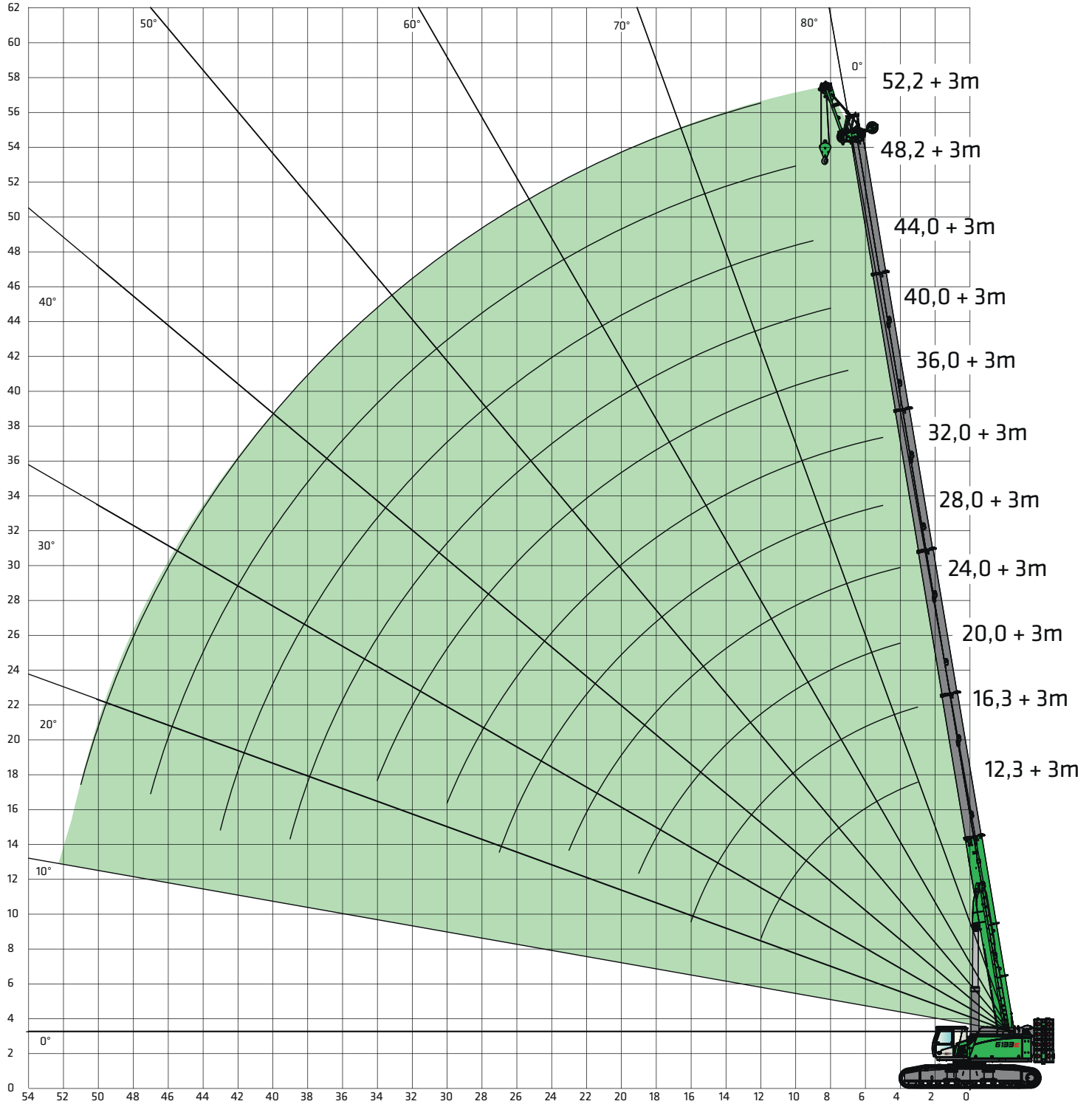
Notes:

1. The load ratings given apply when the machine is on a firm and level surface (± 0.3°).
2. The load ratings are given in tonnes and apply 360 degrees.
3. The load capacities correspond to EN13000.
4. The weight of the load handling equipment (hooks, suspension gear) should be deducted from the load capacities.
5. The load ratings apply for the track width.
6. The load ratings apply for the bolted boom.
7. Load capacities must be limited or reduced in adverse conditions such as soft or uneven ground, slopes, wind, side loads, swinging loads, jolts or sudden stopping of loads, personnel and operators not experienced in handling loads.
7. Permissible cable pull per strand in crane mode for cable diameter 26 mm - 12,500 kg.
8. The load ratings and boom lengths given are for reference only. Please refer to the tables in the operating instructions for the relevant applicable load ratings and boom lengths.
9. Values marked with * only apply with special equipment.

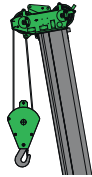
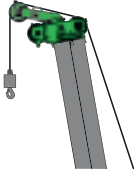

































6133E Crane equipment
















Main boom HA 52.2 m + SLS



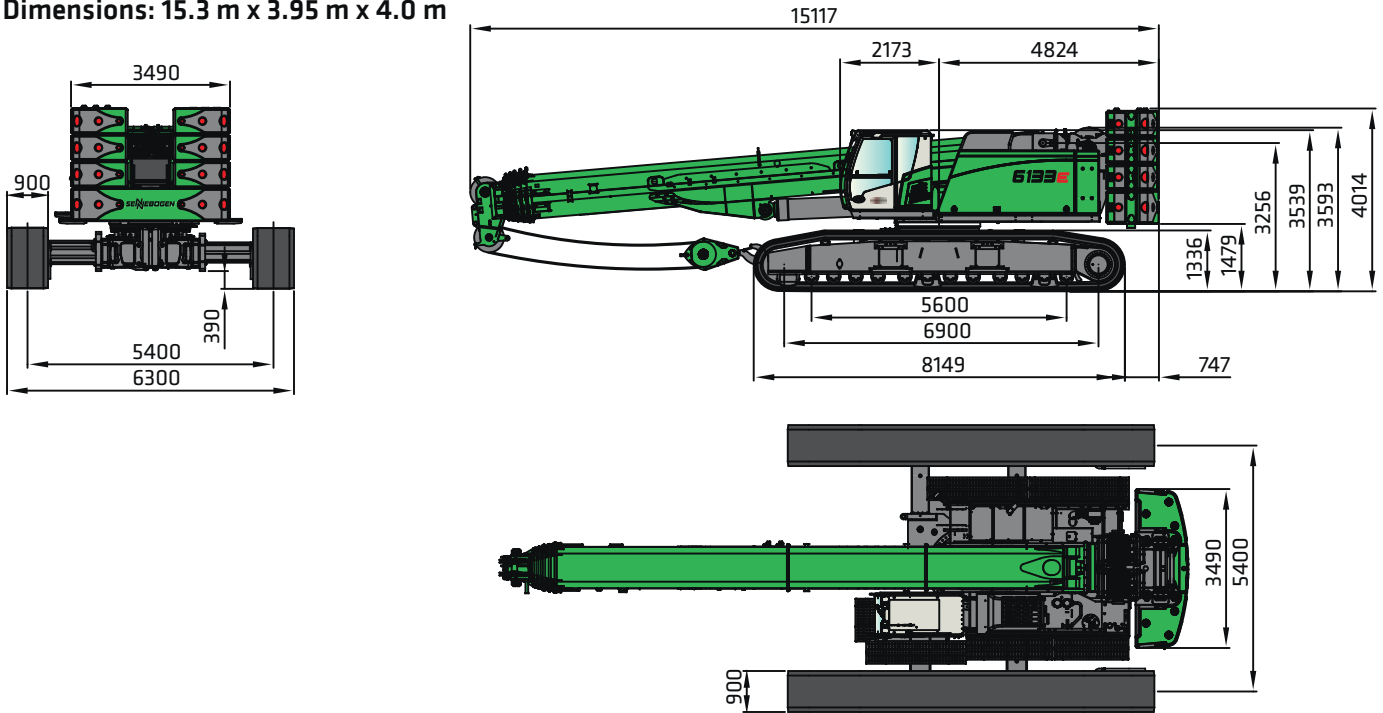
6133E Load capacity programs

	Main boom HA			Auxiliary boom HA-S			SLS		
									
Undercarriage track width	 5.4 m	 4.2 m	 3.05 m	 5.4 m	 4.2 m	 3.05 m	 5.4 m	 4.2 m	 3.05 m
Counter weight [t]									
 35.3 t	360° 	360° 	-	360° 	360° 	-	360° 	360° 	-
 21.3 t	360° 	360° 	-	360° 	360° 	-	360° 	360° 	-
 0 t	360° 	360° 	360° 	360° 	360° 	360° 	360° 	360° 	-

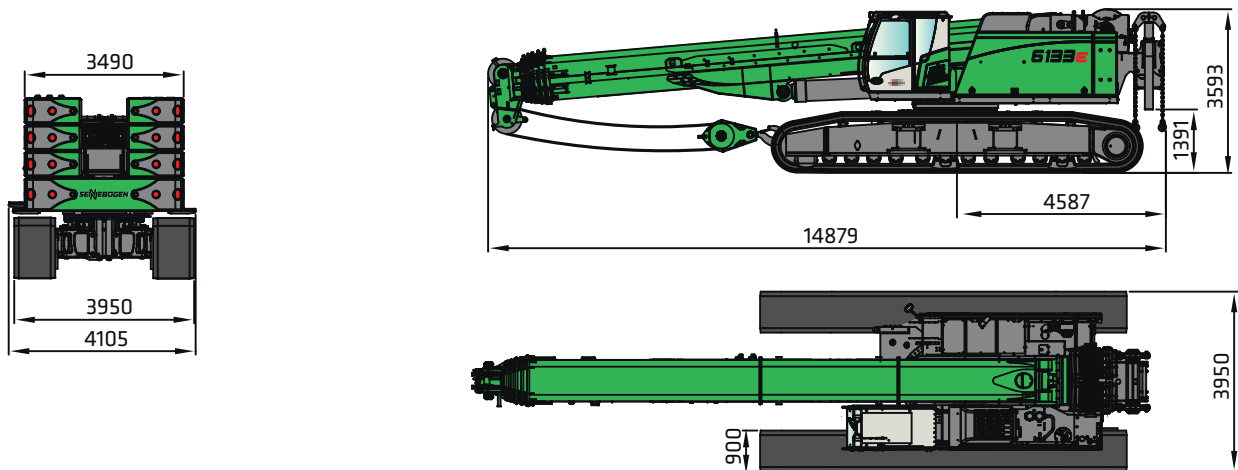
	Fly boom SA 8 m			Fly boom SA 15 m		
						
Undercarriage track width	 5.4 m	 4.2 m	 3.05 m	 5.4 m	 4.2 m	 3.05 m
Counter weight [t]						
 35.3 t	360° 	-	-	360° 	-	-
 21.3 t	-	-	-	-	-	-
 0 t	-	-	-	-	-	-

6133E Transport dimensions and weights

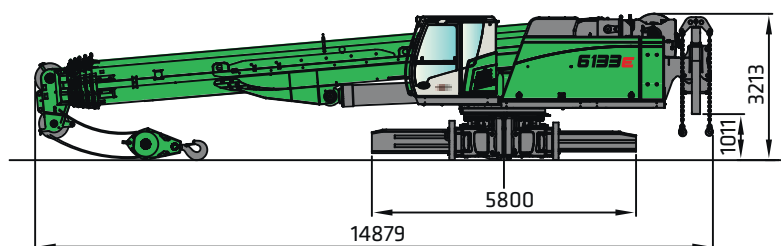
Weight: approx. 119 t (2 winches, 8 m fly boom, 80 t hook, 35 t counter weight, 900 mm triple grouser plates)
 Dimensions: 15.3 m x 3.95 m x 4.0 m



Weight: approx. 84 t (2 winches, 8 m fly boom, 80 t hook, no counter weight)
 Dimensions: 14.9 m x 3.95 m x 3.6 m



Weight: approx. 52.6 t (2 winches, 8 m fly boom, 80 t hook, no counter weight, no traveling gear)
 Transport width: 14.9 m x 3.0 m x 3.2 m

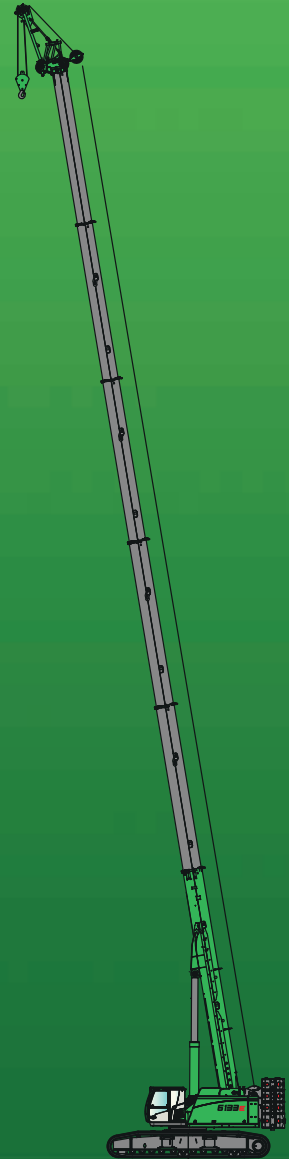


6133E Transport dimensions and weights

	Track wheel carrier	2 x	15700 kg
	Ballast base plate	1 x	14150 kg
	Ballast plates	6 x	3500 kg
	Fly boom 8 m SA80.2		920 kg
	Fly boom extension 7 m SAV70.2		300 kg
	Auxiliary boom S12.5		160 kg
	Heavy-duty jib S36.2		650 kg

6133E

R



This catalog describes machine models, scopes of equipment of individual models, and configuration options (standard equipment and optional equipment) of the machines delivered by SENNEBOGEN Maschinenfabrik. Machine illustrations can contain optional equipment and supplemental equipment. Actual equipment may vary in a tolerance range depending on the country to which the machines are delivered, especially in regard to standard and optional equipment

All product designations used may be trademarks of SENNEBOGEN Maschinenfabrik GmbH or other supplying companies, and any use by third parties for their own purposes may violate the rights of the owners. Please contact your local SENNEBOGEN sales partner for information concerning the equipment variants offered. Requested performance characteristics are only binding if they are expressly stipulated upon conclusion of the contract. Delivery options and technical features are subject to change. Errors and omissions excepted. Equipment is subject to change, and rights of advancement are reserved. © SENNEBOGEN Maschinenfabrik GmbH, Straubing/Germany. Reproduction in whole or in part only with written consent of SENNEBOGEN Maschinenfabrik GmbH, Straubing, Germany.

SENNEBOGEN

SENNEBOGEN
Maschinenfabrik GmbH
Sennebogenstraße 10
94315 Straubing, Germany

Tel. +49 9421 540-144/146
marketing@sennebogen.de

Order no. 299270
6133-E-R-031910

GO FOR GREEN

 www.sennebogen.com