

**SMS SIDE GRIP  
TUBULAR PILE  
DRIVERS**

**PRODUCT CATALOG**

**PILE DRIVER EQUIPMENT  
PRODUCER**

**MADE IN TURKEY**





**SMS PARS SGT TUBULAR VIBRO HAMMER SERIES**



We started the production of S-Series standart frequency hydraulic excavator mounted vibratory hammer in 2008 and in 2012 we started to produce first Side Grip Vibratory hammer model in Turkey.

Since 2016 By developing our product portfolio, we started to produce and offer to customers our Side grip sheet piler models, our SMS PARS SGT TUBULAR VIBRO HAMMER models comes with standart fixed tubular piling clamp - the same side grip tubular pile driver can be used to handle a different range dimensions of Tubular piles with it's reduction apparatus

Reduction apparatus is produced as per customer's required dimensions.

Side grip PARS SGT Series Side grip tubular piling vibrators enable tubular piles to be lifted from the ground, pitched and driven without the need for a crane, piling gates or in some cases a banksman, making this piling system far more cost effective than the traditional method. Side grip PARS SGT Series Side Grip system to install tubular piles on sites where access is not available for larger piling rigs or where the piles are to be installed a large distance from the piling platform. Side grip PARS SGT tubular piling vibratory hammer unit is attached to the end of the dipper arm of a 360° excavator. The vibratory unit can be rotated vertically and horizontally.

With the adjustable clamping pressures of our Vibro hammers, you can also carry out the piling of various materials.

With The new SMS control system, use of the machine has never been this much easier. With the programmable display on the control system, you can monitor the piling work from inside excavator's cab and you can control the angles during piling operation

## GENERAL SPECS OF SIDE GRIP PARS SGT TUBULAR PILING VIBRO HAMMERS

- Steel Material : **WELDOX** ( We do not use standart St grade Steel)
- Rotation Unit : Our own model production Rotation unit
- Tilting And Rotation : 30 degrees tilting and 360 degrees rotation ability
- Electronic Angle Sensor Screen : There is electronic screen to watch angles of piles and tubes during piling operation
- Oiling System : Automatic oiling system. By this new and unique system the oil for gears and bearings never mixes to each others. And they get oiled seperately then each others. This gives us advantage to do for long term pile driving ability, 50% more then competitor brands, and body of our vibro hammers does not get overheat.
- Bearings : SKF
- Hydromotor : Parkins
- Gears : Heat threated own production gear system and well grinded.
- Whole body heat treatment done!

## PARS SGT 30

## TUBULAR PILE

## DRIVER



SMS PARS SGT 30			
Eccentric Moment (Kgm)			3
Centrifugal Force (kN)			310
Max. Amplitude (mm)			8,7-10
Speed (d/d)			3000
Max. Pulling Force (kN)			60
Max. Pushing Force (kN)			40
Dynamic Weight (kg)			1400
Total Weight (kg)			1650
Total Length (mm)			1280
Total Width (mm)			1100
Total Height (mm)			2300
Flow (Lt/min)			120
Working Pressure (bar)			300
Power (kW)			165
Hydromotor			F12-40
Oil Pump			+
Number of Cylinders			3
Rotation-Swing Angles(°)			360-30
Suitable Excavator class			14-20 Tons
Tubular Pile , Tubes	80 mm - 325 mm	4/6/8 meter lenght	Max 800 kg



# PARS SGT 40

## TUBULAR

## PILE DRIVER



SMS PARS SGT 40			
Eccentric Moment (Kgm)			4
Centrifugal Force (kN)			370
Max. Amplitude (mm)			8,7
Speed (d/d)			2800
Max. Pulling Force (kN)			120
Max. Pushing Force (kN)			80
Total Weight (kg)			1850
Total Lenght (mm)			1200
Total Width (mm)			1100
Total Height (mm)			2250
Flow (Lt/min)			170
Working Pressure (bar)			300
Power (kW)			85,0
Hydromotor			F12-30 x 2 pieces
Oil Pump			+
Number of Cylinders			3
Rotation-Swing Angles(°)			360-30
Suitable Excavator class			20 -28 tons
Tubular Piles	150 mm- 400 mm	6 / 8 / 10 meter lenght	Max 1200 kg

## PARS SGT 60

## TUBULAR

## PILE DRIVER



SMS PARS SGT 60			
Eccentric Moment (Kgm)			6
Centrifugal Force (kN)			450
Max. Amplitude (mm)			12
Speed (d/d)			2500
Max. Pulling Force (kN)			120
Max. Pushing Force (kN)			80
Dynamic Weight (kg)			2500
Total Weight (kg)			2750
Total Length (mm)			1200
Total Width (mm)			1300
Total Height (mm)			2350
Flow (Lt/min)			204
Working Pressure (bar)			300
Power (kW)			120
Hydromotor			F12-40 x 2 pieces
Oil Pump			+
Number of Cylinders			3
Rotation-Swing Angles(°)			360-30
Suitable Excavator class			28-32 Tons
Tubular Pile , Tubes	150 mm to 460 mm	8/10/12 meter lenght	Max 2300 kg

## PARS SGT 80

## TUBULAR

## PILE DRIVER





SMS PARS SGT 80			
Eccentric Moment (Kgm)			8
Centrifugal Force (kN)			604
Max. Amplitude (mm)			14,5
Speed (d/d)			2500
Max. Pulling Force (kN)			175
Max. Pushing Force (kN)			90
Dynamic Weight (kg)			3200
Total Weight (kg)			3500
Total Length (mm)			1350
Total Width (mm)			1422
Total Height (mm)			2560
Flow (Lt/min)			240
Working Pressure (bar)			300
Power (kW)			165
Hydromotor			F12-40 x 2 peices
Oil Pump			+
Number of Cylinders			3
Rotation-Swing Angles(°)			360-30
Suitable Excavator class			32 Tons and Over
Tubular Pile , Tubes	150 mm to 762 mm	12/ 16 meter lenght	Max 2850 kg

## SMS SIDEGRIP PARS SGT TUBULAR VIBROHAMMER SERIES

Using the table below, you can choose the most appropriate model from among the PARS SGT SIDE GRIP TUBULAR VIBRO HAMMER series.

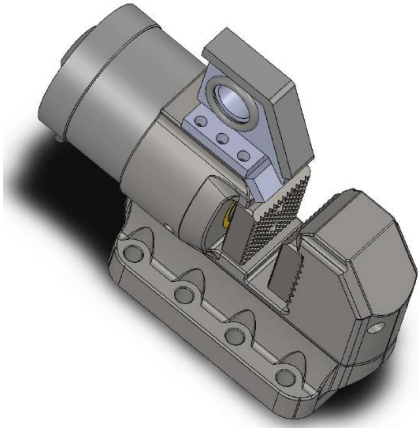
The choice is based on the dimensional and tonnage characteristics of your excavator or your vehicle.

At the last choice, the engine size and hydraulic system of the excavator or the carrier will be decisive. (Oil pumps, flow rate, pressure and site and ground conditions to be used should be taken into consideration. )

				
EXCAVATOR TYPE	PARS SGT 30	PARS SGT 40	PARS SGT 60	PARS SGT 80
8 - 14 ton				
14 - 20 ton				
18-28 ton				
28 - 32 ton				
34 - 42 ton				
42 ton <				



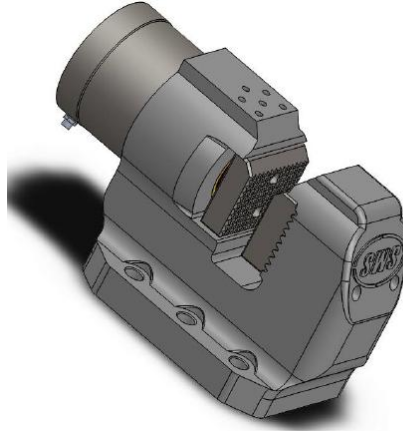
## **STANDART SERIES CLAMP**



**S-CN-450**

**45 TON**

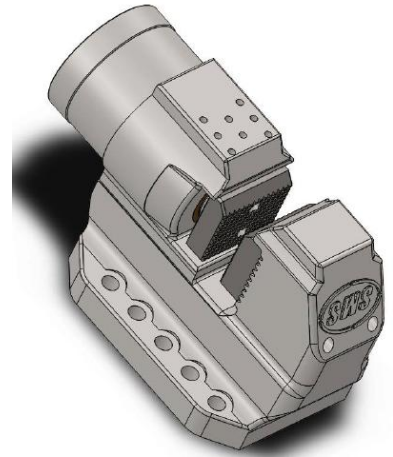
**300 BAR**



**S-CN-500**

**50 TON**

**300 BAR**



**S-CN-600**

**60 TON**

**300 BAR**

## **PARS SGT SERIES CONTROL SYSTEM**

With the SMS Control Unit which we install in Excavator, you can Control all movements of your vibratory hammer ,You can do  $\pm 30^\circ$  piling and can see your piling angles from the programmable monitor . Also you can see how many hours your piling machine worked actively.

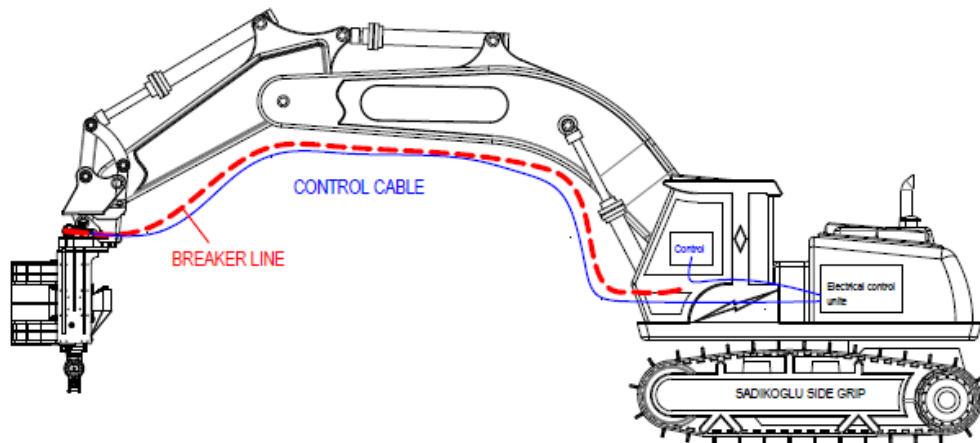


## PARS SGT SERIES HYDRAULIC SYSTEM

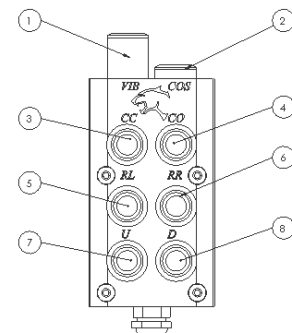
In our entire hydraulic system we use only Rexroth. The rexroth mark products are used on our own production valve block. All our models are working without compromising quality by using PARKER brand hydraulic motors



## PARS SGT MODEL SIDE GRIP TUBULAR VIBRO HAMMER EXCAVATOR INSTALLATION



PARS SGT 80 CONTROL CONSOLE		
NO	Button Symbol	Function
1	VIB	VIBRATION
2	COS	CLAMP OPEN SAFETY
3	CC	CLAMP CLOSE
4	CO	CLAMP OPEN(you must push button 2 with 4)
5	RL	ROTATE LEFT
6	RR	ROTATE RIGHT
7	U	UP
8	D	DOWN



## ATTACHMENTS



**EXTENSION ARM**



**CONNECTION FORK**







[www.sadikoglumake.com.tr](http://www.sadikoglumake.com.tr)

Phone: +90 262 335 03 17

sadikoglu@sadikoglumakine.com.tr

<http://sevenocean.com.tr/vibratory-hammers.html>

Phone : +902623356238

[alkan@sevenocean.com.tr](mailto:alkan@sevenocean.com.tr)



**AGD Equipment Limited**

**t: (+44) 01789 292227**

**d: (+44) 01789 295030**

**[www.agd-equipment.co.uk](http://www.agd-equipment.co.uk)**