



**AGD Equipment Limited**

SALES • RENTAL • SERVICE • PARTS

**MINI CRANES**

**CRAWLER CRANES**

**TELESCOPIC CRANES**

**PILING RIGS  
AND EQUIPMENT**

**01789 292227**

**info@agd-equipment.co.uk**

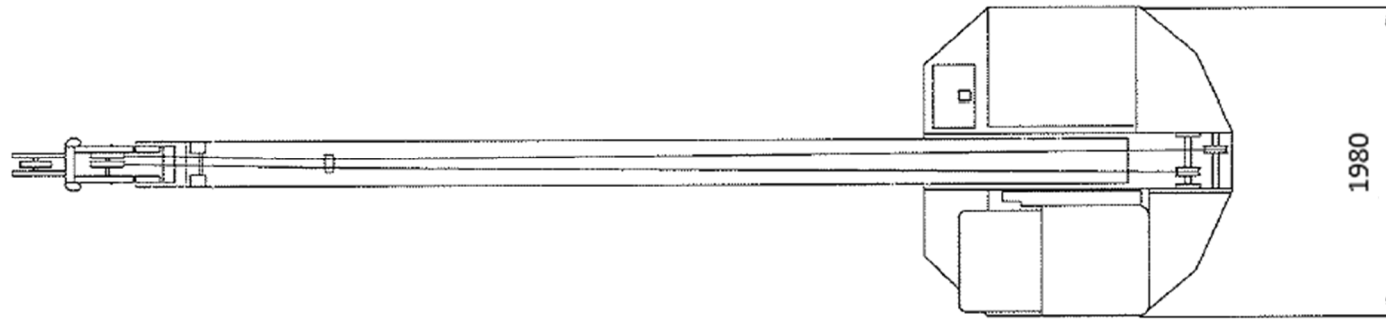
AGD Equipment Limited  
Avonbrook House  
198 Masons Road  
Stratford-upon-Avon  
Warwickshire  
CV37 9LQ  
United Kingdom



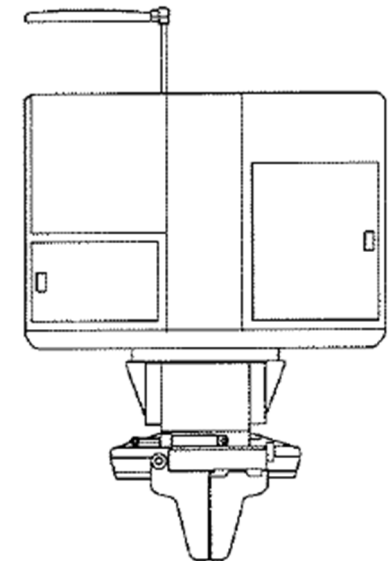
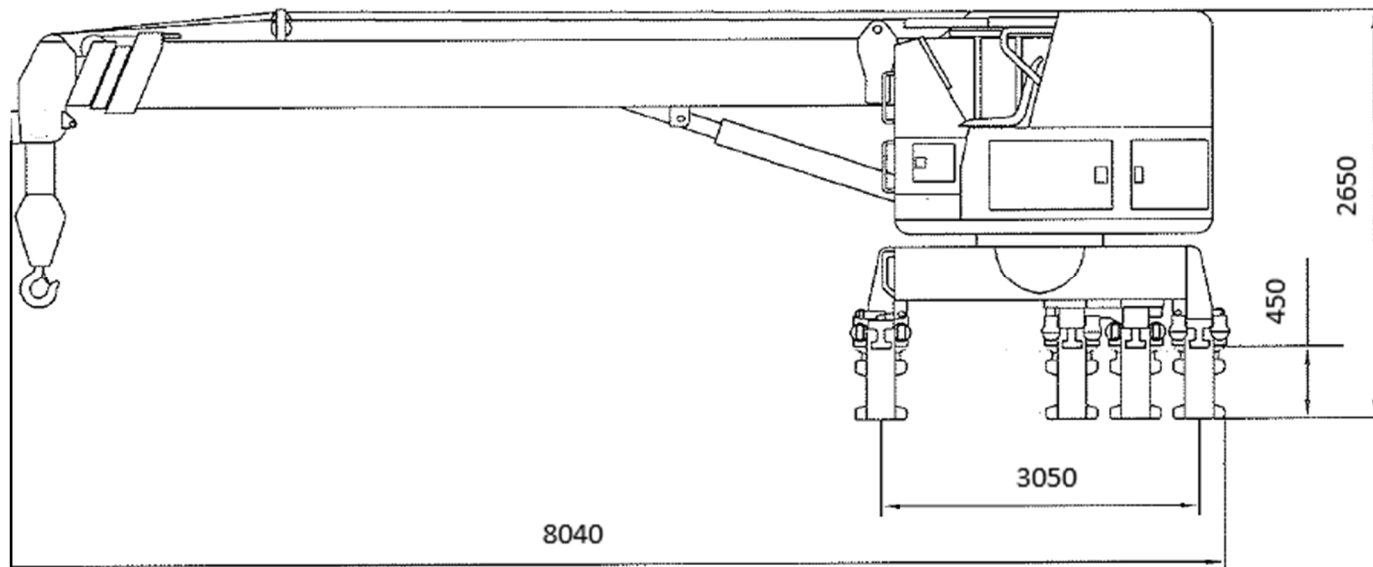
# **Giken CB2-5 Clamp Crane Specification**

[www.agd-equipment.co.uk](http://www.agd-equipment.co.uk)

# Giken CB2-5 (7t) Clamp Crane



Specification		
Lifting Capacity		7.0 ton x 2.5 m
Max. Working Radius		0.17 ton x 20.5 m
Engine		Hatz 3H50TICD
Emission Rating		Stage 5
Reaction Pile Range		600 mm pitch
Operation	Crane	Manual
	Self-moving	Remote Control
Weight		7.000 kg



## Clamp Crane Main Body

### Lifting Capacity

(Unit: ton)

Boom Length Load Radius (m)	6.6m	11.5m	16.4m	21.3m
2.0m	(7.00)			
2.5 m	(7.00)			
3.0 m	(6.10)	4.90		
3.5 m	(5.30)	4.90	3.90	
4.0 m	4.55	4.50	3.60	
4.5 m	3.75	3.85	3.30	2.00
5.0 m	3.15	3.25	3.05	2.00
5.5 m	2.70	2.80	2.80	1.85
6.0 m	2.35	2.45	2.45	1.75
7.0 m		1.90	1.95	1.45
8.0 m		1.55	1.55	1.25
9.0 m		1.25	1.30	1.10
10.0 m		1.05	1.10	0.95
10.9 m		0.90	0.90	0.90
12.0 m			0.75	0.78
13.0 m			0.65	0.70
14.0 m			0.55	0.60
15.0 m			0.45	0.52
15.8 m			0.40	0.45
17.0 m				0.37
18.0 m				0.31
19.0 m				0.25
20.0 m				0.20
20.5 m				0.17

**\* Note**

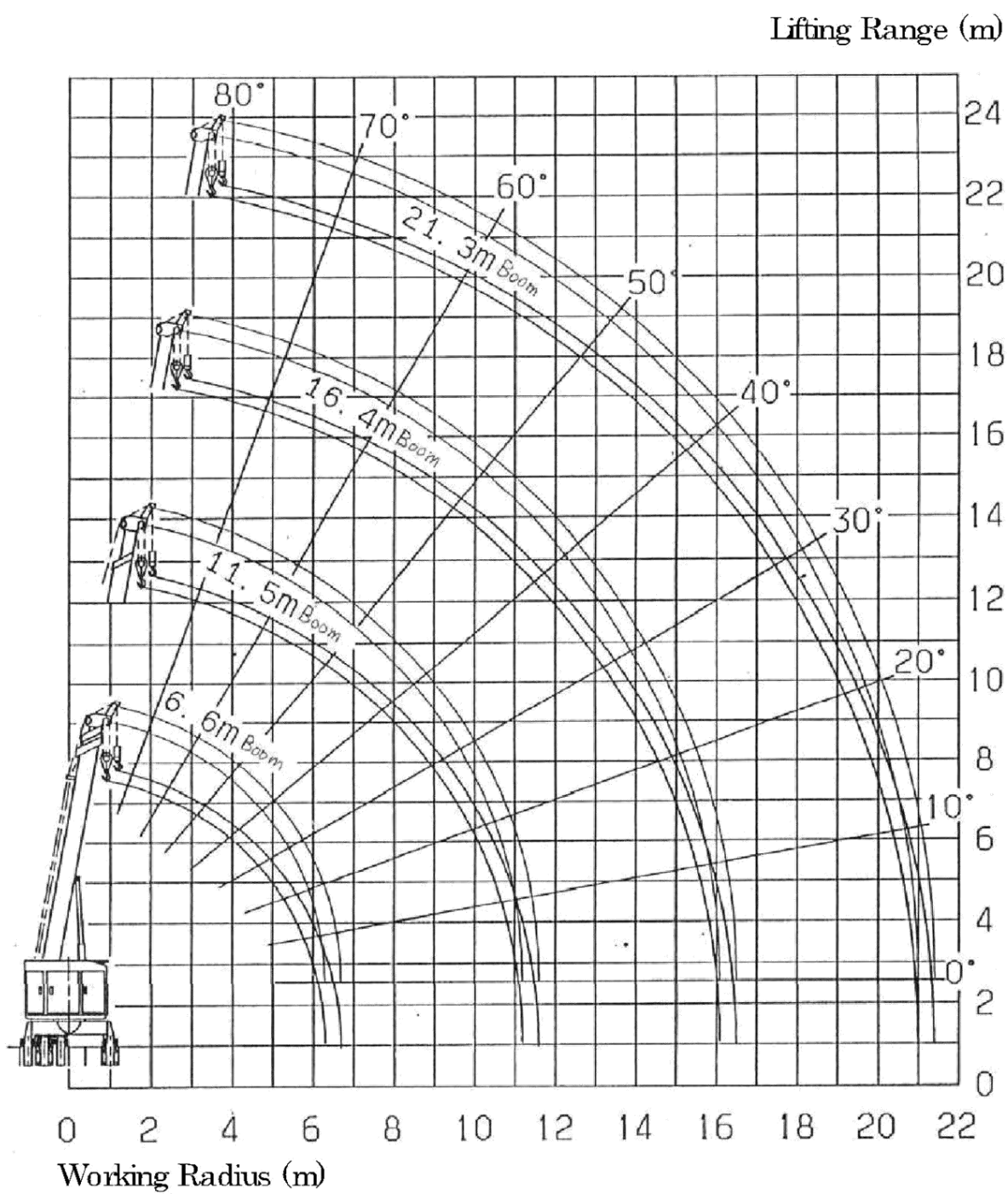
The rated lifting capacity includes the mass of the lifting devices.

The load radius in the above table indicates the actual load radius inclusive of boom deflection with a load lifted.

Even when the actual boom length exceeds the value in the table to a small extent, use the capacity of the next boom length to perform an operation.

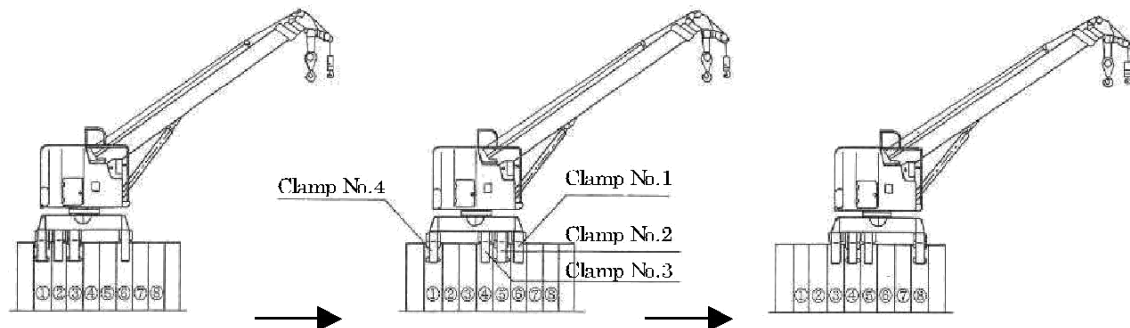
## Clamp Crane Main Body

Working Radius - Lifting Range



## Self-Moving

### Mode of Self-moving



Open Clamp No.2 and No.3  
(reaction pile position ①&②.)

Move Clamp No.2 and No.3  
forward to reaction piles ④&  
⑤. Close Clamp No. 2 and No.  
3.

Open Clamp No.1 and No. 4  
(reaction pile position ①&⑥).  
Move Clamp No.1 and No. 4  
forward to the next positions:  
(reaction pile positions ③&⑧)

### ⚠ DANGER

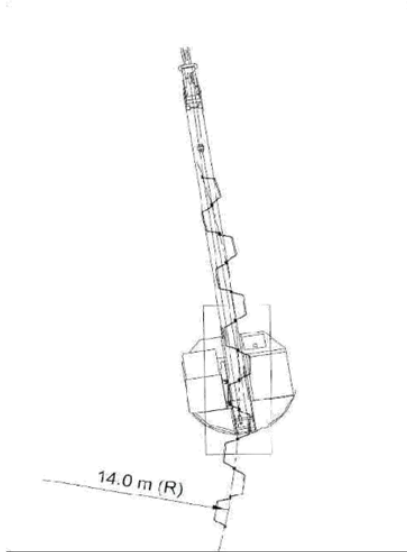
- Do not take your eyes off the clamp crane during self moving.
- Do not work between the clamp crane and structures or under the clamp crane during self moving.
- Before performing the clamp close operation, check that there is no abnormal object adhesion on the completed pile surface. In addition, do not allow the clamp jaw to contact the flange section of the completed pile. Otherwise, the jaw may be damaged and the machine may overturn.
- Do not perform self-moving if the bearing capacity is insufficient due to a status where the completed pile is not installed deep enough or ground condition is too soft.
- Do not perform self-moving when the completed pile inclines laterally.
- Do not perform self-moving if the completed pile does not have enough strength. (The completed pile strength varies depending on the pile type, levee crown height, and other conditions.)
- Do not perform self-moving if the clamp No.1 safety lamp and clamp No.2, 3 safety lamp do not light up.

## Appendix

---

### Restriction on Use

#### 1. Curve piling



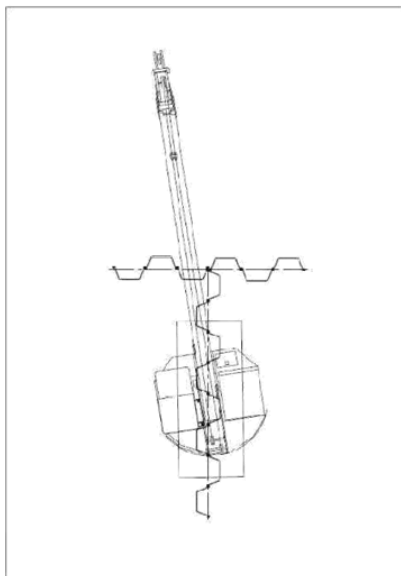
The Minimum Radius:  $R = 14,000 \text{ mm}$

The minimum radiuses of sheet piles differ from sheet pile types and sheet pile sections.

Upon planning any curved sheet pile alignment, the minimum radius of CB2-5 must be carefully considered.

If you need further consultation, please contact to the nearest Giken office.

#### 2. Corner piling



Not available.

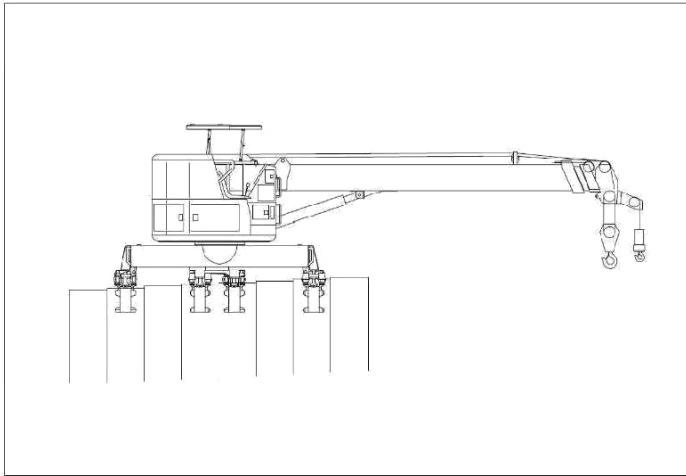
CB2-5 is not applicable for self moving on the corner alignment.

If you need further consultation, please contact to the nearest Giken office.

## Appendix

---

### 3. Uneven piling



Not available.

CB2-5 is not applicable for self-moving on up-slope or down-slope on sheet pile top elevation.

If you need further consultation, please contact to the nearest Giken office.