



AGD Equipment Limited

SALES • RENTAL • SERVICE • PARTS

MINI CRANES

CRAWLER CRANES

TELESCOPIC CRANES

**PILING RIGS
AND EQUIPMENT**

01789 292227

info@agd-equipment.co.uk

AGD Equipment Limited
Avonbrook House
198 Masons Road
Stratford-upon-Avon
Warwickshire
CV37 9LQ
United Kingdom



Sennebogen 6100HD Specification

www.agd-equipment.co.uk

SENEBOGEN



354 - 470 kW



100 t (metric)



MAXCAB

6100 HD

Heavy Duty Seilbagger / Kran
Duty Cycle Crawler Crane

- Engine output up to 470 kW (639 HP)
- Very strong, state of the art hydraulic system
- Electronic speed sensing
- Additional hydraulic circuits
- Line pull up to 2 x 30 t
- Precise control and high line speeds
- Robust, very service-friendly design
- Well sized tractor type crawler B8b

Specifications



Engine

Caterpillar Diesel engine C15 Tier III, with direct injection, water-cooled. 354 kW (481 HP) at 1800 rpm.

Optional:

Caterpillar Diesel engine C18 Tier III, with direct injection, water-cooled. 470 kW (639 HP) at 1800 rpm.

Dry air filter with preliminary filter, main and safety element.
Electric system 24 Volt, high efficiency cold starting batteries. Speed idling function.
Fuel tank capacity: approx. 830 l



Hydraulic System

All hydraulic pumps are variable displacement piston pumps with individual regulation for each pump. The pumps are equipped with an energy-saving flow-on-demand control system and pressure cut-off for high efficiency and reduced loss of energy.

Max. flow rates:

420 l/min for travel and winch 1
420 l/min for travel and winch 2
200 l/min for boom hoist
200 l/min for swing

Working pressure up to 330 bar.

Hydraulic tank capacity: approx. 1000/800 l

Optional:

Additional hydraulic packages for external user (e. g. casing machines, vibrators, hydro cutter etc.)

Hydraulic filters with long intervals between change.

Large dimensioned hydraulic cooling system. Servo-assisted joy-stick controls according to ISO-System. Central service tableau. Decomposable hydraulic oil (synthetic) can be used.

Hydro Clean hydraulic superfine filter with water absorption. (Option)



Winch 1 - Winch 2

Each winch is driven independently by a directly flanged variable displacement hydraulic piston motor with high pressure regulation. Hydraulic brake valves for wear resistant braking of loads. Strong low maintenance oil bath planetary gears. The clutch and brake functions are effected through large dimensioned, maintenance-free, low-wearing, oil-lubricated multiple disc brakes - spring loaded as safety brakes.

Grab closing automatics for 2 rope grab operation- dividing the load equally onto both winches.

Combilink - for dragline operation, allows power load lowering for the dredging winch.

Winches		20t	25t	30t
Single line pull	kN	200	250	300
Rope dia.	mm	28	34	34
Line speed	m/min	95	80	73



Slewing System

The slewing function is operated through hydraulic piston motor with oil bath planetary gear. Spring-loaded hydraulically releasable multiple-disc brakes self-closing. Large dimensioned triple roller slewing ring. Slewing speed from 0 to 3.5 rpm, 0 to 1.1 rpm for crane operation. Power transmission through 2 slewing motors, thus less tooth pressure and moments. Precision slewing operation with presel-ector switch.



Boom Hoist Operation

Completely independent operation by a separate hydraulic circuit over axial piston motor, spring-loaded hydraulically releasable multiple-disc brake, planetary gear and winch drum with special grooving and integral drum lock. Max. line pull 110 kN (11 t), rope dia 20 mm and integral drum lock.



Upper Structure

Torsion-free precision machined upper frame. All components are located clearly and service friendly. Engine with low noise level.

Counterweight 29 t

optionally: 36 t plus 15 t carbody counterweight



Undercarriage

Strong, hydraulically extendable crawler carriage T127/410. Each track is independently driven by an axial piston motor through planetary final drive. Spring loaded hydraulically releasable multiple-disc brake.

Maintenance-free tractor type crawler with hydraulic track-tensioning device. Tractor type crawler. Excellent rough terrain travel.

6100 HD travel speed with crawler B8b is 0 - 1.3 km/h.



Working Equipment

Tubular boom 13.1 m - 69.1 m, double sheave hammer head, crane/grab/dragline equipment. Complete crane safety device with electronic SLI-Safe load Indicator. (optionally)



Operator's Cab

MAXCAB

SENNEBOGEN maXcab resiliently mounted with sliding door, excellent ergonomics, airconditioning and heating with temperature setting, fresh air / circulating air filter, air suspended comfort seat, excellent 360° visibility, SENNEBOGEN diagnostic system



Service Weight

Basic Machine 6100 HD with 2 x 20 t Freefall winches, Engine 354 kW, basic boom 13.1 m, track B8b, Length 6600 mm, 800 mm triple bar shoes

with hydraulically extendable undercarriage and counterweight 29 t

96 t

with hydraulically extendable undercarriage and counterweight 36 t and 15 t carbody-counterweight

118 t

The shown weights may vary with different equipment!

Leading through Innovation

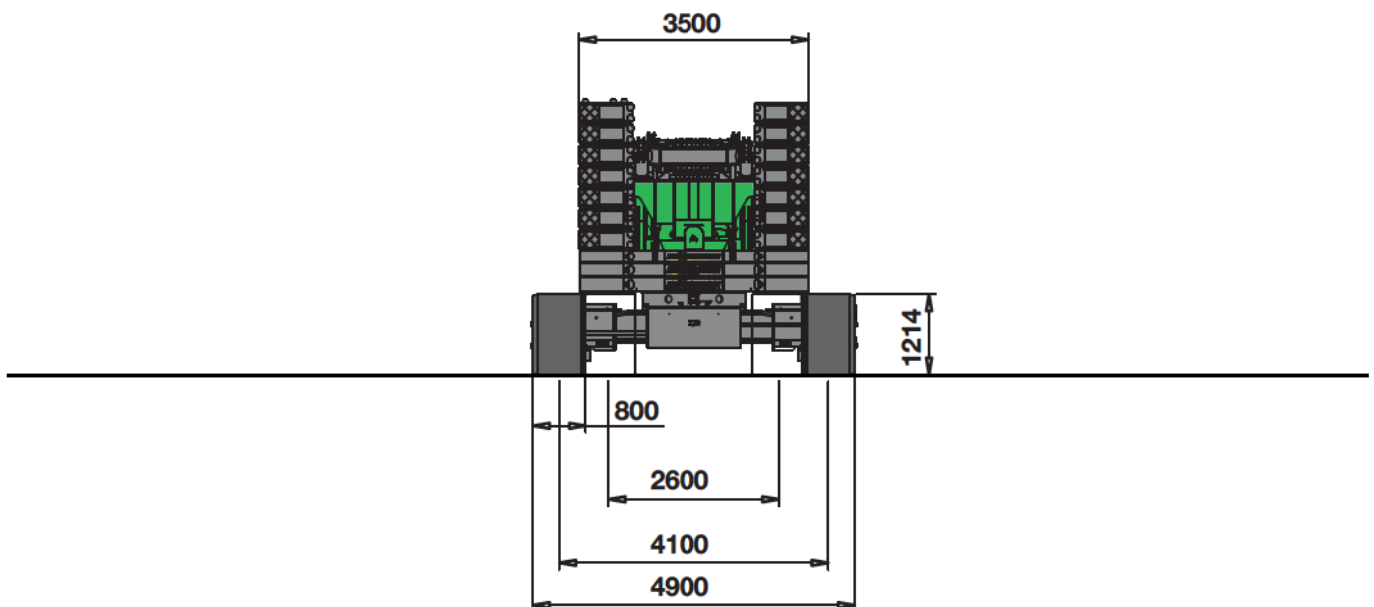
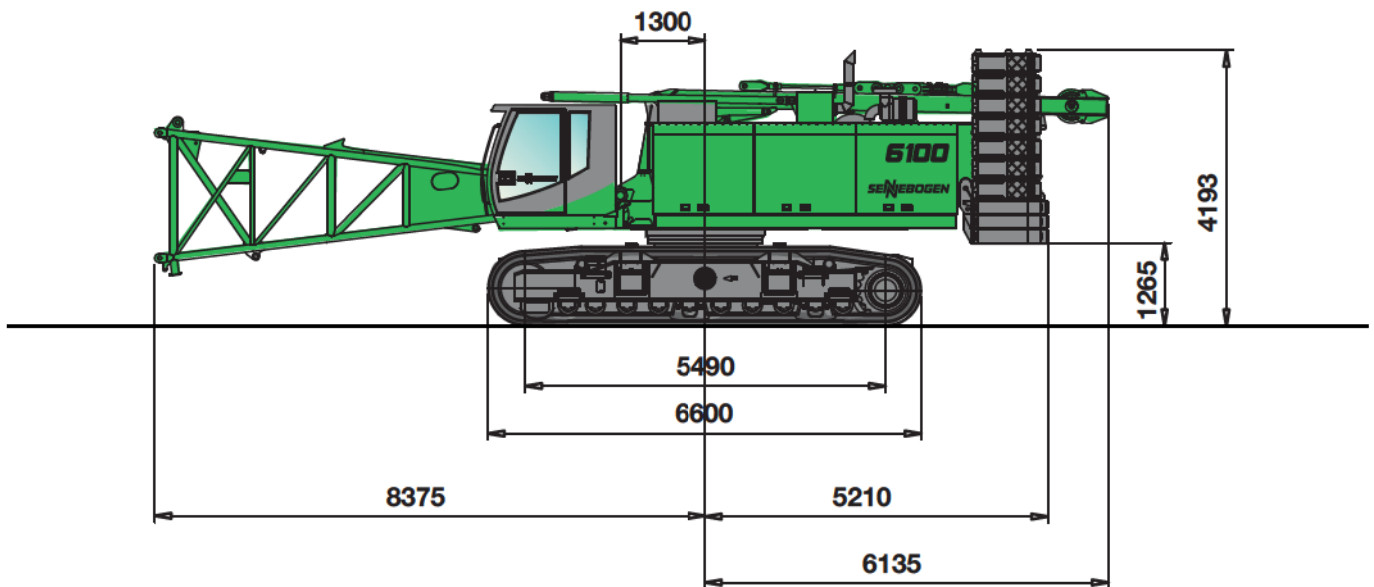
Maße / Dimensions

6100 HD mit 2 x 20 t Freifallwinden, Dieselmotor 354 kW, Grundausleger 13,1 m, Laufwerk B8b, Länge 6600 mm, 800 mm 3 Steg Bodenplatten, hydraulisch teleskopierbarem Unterwagen T127/410 und Gegengewicht 36 t + 15 t (am Unterwagen)

ca. 118t

6100 HD with 2 x 20 t free fall winches, Engine 354 kW, basic boom 13,1 m, track B8b, length 6600 mm 800 mm triple bar shoes, hydraulically extendable undercarriage type T127/410 and counterweight 36 t + 15 t (carbody)

appr. 118 t

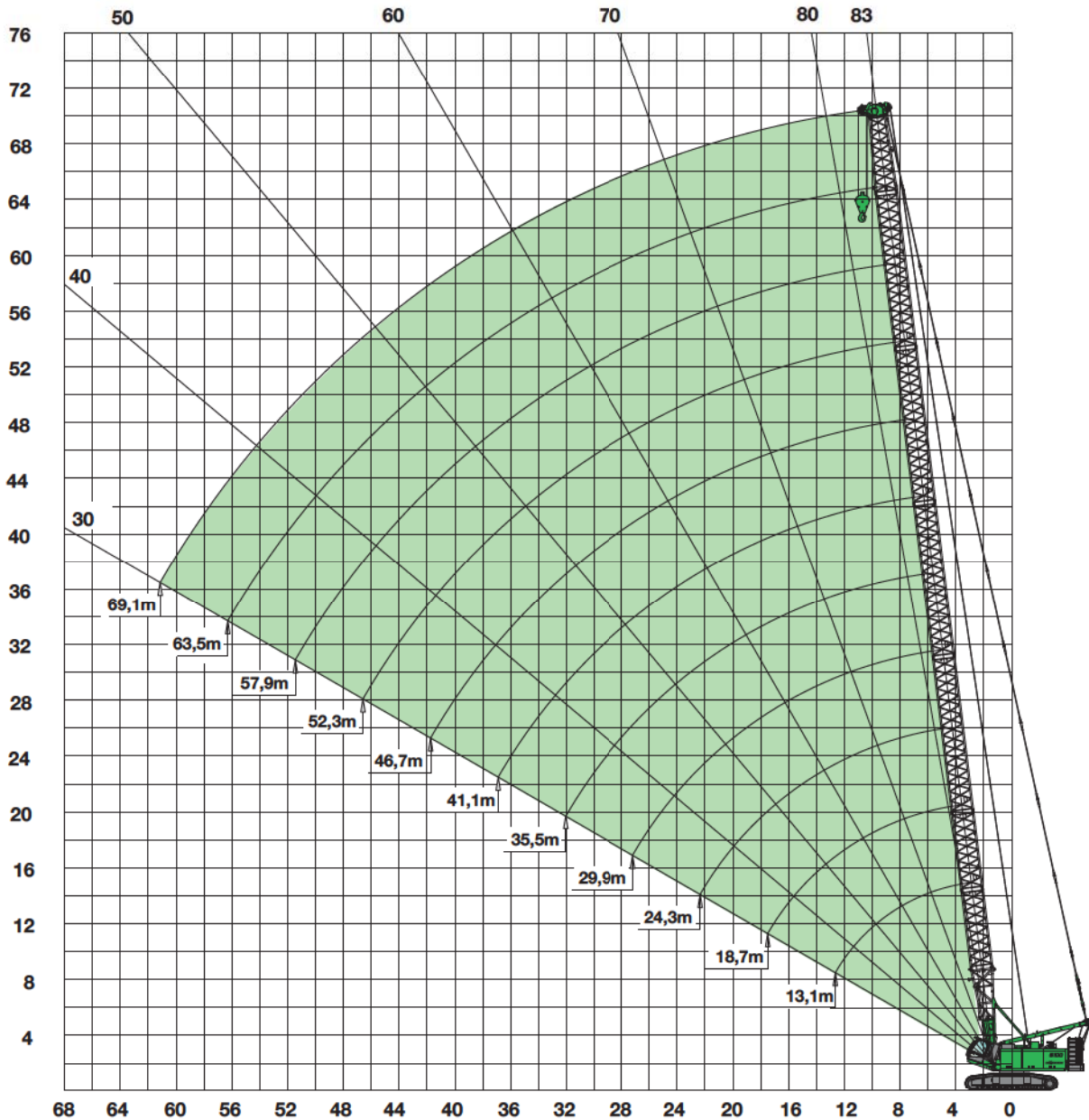


Kranausrüstung / crane equipment

DIN
ISO



13,1 - 69,1 m



Auslegerkonfiguration - Hauptausleger SH boom configuration - main boom SH												
Auslegerlänge [m] boom length [m]		13,1	18,7	24,3	29,9	35,5	41,1	46,7	52,3	57,9	63,5	69,1*
Fußstück SH Typ 1608 lower boom SH type 1608	7,0m	1	1	1	1	1	1	1	1	1	1	1
Zwischenstück SH Typ 1608 boom insert SH type 1608	5,6m	0	1	2	1	2	1	2	1	2	1	2
Zwischenstück SH Typ 1608 boom insert SH type 1608	11,2m	0	0	0	1	1	2	2	3	3	4	4
Zwischenstück konisch SH Typ 1608/1370 tapered boom insert SH type 1608/1370	5,6m	1	1	1	1	1	1	1	1	1	1	1
Rollenkopf T130 boom head T130	0,5m	1	1	1	1	1	1	1	1	1	1	1
Schnabelausleger S12.1 (optional) auxiliary jib S12.1 (option)	12,0t	x	x	x	x	x	x	x	x	x	x*	-
Schnabelausleger S24.1 (optional) auxiliary jib S24.1 (option)	24,0t	x	x	x	x	x	x	x	x	x	x*	-

* nur in Verbindung mit Ballast 36 t + 15 t / only in combination with counterweight 36 t + 15 t

Main boom SH,
Counterweight 36t + 15t

Kran-Traglasten

Hauptausleger SH

Gegengewicht	36,0 t
Unterwagenballast	15,0 t

Crane Load Chart

6100 B HD

main boom SH

counterweight	36,0 t
carbody counterweight	15,0 t

Ausladung Radius[m]	Auslegerlänge / boom length [m]											
	13,1	18,7	24,3	29,9	35,5	41,1	46,7	52,3	57,9	63,5	69,1	
4,0	100,0	96,0 / 4,6										
5,0	86,7	90,0	75,0 / 5,2	60,0 / 5,9								
6,0	74,9	76,6	68,6	59,5	50,0 / 6,6							
7,0	63,1	63,0	60,3	54,1	48,4	42,0 / 7,3						
8,0	51,9	51,7	51,6	48,7	44,6	40,0	32,0	26,0 / 8,7				
9,0	43,9	43,7	43,5	43,3	40,7	37,2	30,4	25,6	20,0 / 9,3			
10,0	37,9	37,7	37,5	37,4	36,9	34,4	28,8	24,5	19,5	16,0	12,0 / 10,7	
11,0	33,3	33,1	32,9	32,8	32,4	31,6	27,2	23,4	18,8	15,5	11,9	
12,0	29,7	29,4	29,2	29,1	28,7	28,6	25,6	22,4	18,2	15,0	11,6	
13,0	26,7	26,4	26,2	26,1	25,7	25,6	24,0	21,3	17,5	14,6	11,3	
14,0	26,3 / 13,1	23,9	23,7	23,5	23,2	23,0	22,5	20,2	16,8	14,1	11,0	
15,0		21,8	21,6	21,4	21,1	20,9	20,6	19,2	16,2	13,6	10,7	
16,0		20,0	19,8	19,6	19,2	19,1	18,7	18,1	15,5	13,2	10,4	
17,0		18,5	18,2	18,1	17,7	17,5	17,2	17,0	14,8	12,7	10,1	
18,0		17,2	16,9	16,7	16,3	16,1	15,8	15,7	14,2	12,2	9,8	
19,0			15,7	15,5	15,1	14,9	14,6	14,5	13,5	11,7	9,5	
20,0			14,6	14,4	14,0	13,9	13,5	13,4	12,8	11,3	9,2	
22,0			12,9	12,6	12,2	12,0	11,7	11,5	11,2	10,3	8,6	
24,0			12,2 / 22,8	11,2	10,7	10,6	10,2	10,1	9,7	9,4	7,9	
26,0				10,0	9,5	9,3	8,9	8,8	8,4	8,1	7,3	
28,0				9,1 / 27,7	8,5	8,3	7,9	7,8	7,4	7,1	6,7	
30,0					7,6	7,4	7,0	6,9	6,5	6,2	6,1	
32,0					6,9	6,6	6,2	6,1	5,7	5,4	5,3	
34,0					6,7 / 32,5	6,0	5,6	5,4	5,0	4,7	4,6	
36,0						5,4	5,0	4,8	4,4	4,1	4,0	
38,0						5,1 / 37,4	4,5	4,3	3,9	3,6	3,5	
40,0							4,0	3,8	3,5	3,1	3,0	
42,0							3,7	3,4	3,0	2,7	2,6	
44,0							3,6 / 42,2	3,1	2,7	2,3	2,2	
46,0								2,7	2,3	2,0	1,8	
48,0								2,6 / 47,1	2,0	1,7	1,5	
50,0									1,7	1,4	1,2	
52,0									1,5 / 51,9	1,1	1,0	
54,0										0,9		
56,0												
58,0												
60,0												
62,0												
64,0												
66,0												
68,0	TAB.-Nr. 6100R-75/2127/36.0/12.04 SH											
70,0												

**Main boom SH,
counterweight 36t + 15t,
auxiliary jib S12**

Kran-Traglasten

Schnabelausleger SHS12

Gegengewicht	36,0 t
Unterswagenballast	15,0 t

Crane Load Chart

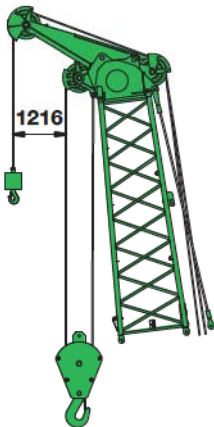
auxiliary jib SHS12

counterweight	36,0 t
carbody counterweight	15,0 t

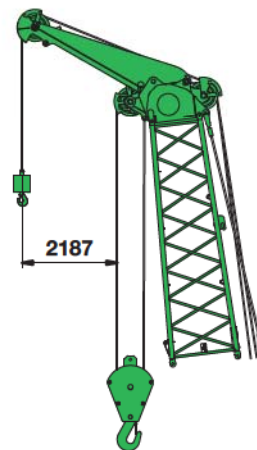
6100 B HD

Ausladung Radius[m]	Auslegerlänge / boom length [m]											
	13,1	18,7	24,3	29,9	35,5	41,1	46,7	52,3	57,9	63,5	69,1	
4,0												
5,0	12,0 / 5,1	12,0 / 5,8										
6,0	12,0	12,0	12,0 / 6,5									
7,0	12,0	12,0	12,0	12,0 / 7,1	12,0 / 7,8							
8,0	12,0	12,0	12,0	12,0	12,0	12,0 / 8,5						
9,0	12,0	12,0	12,0	12,0	12,0	12,0	12,0 / 9,2	12,0 / 9,9				
10,0	12,0	12,0	12,0	12,0	12,0	12,0	12,0	12,0	12,0 / 10,6			
11,0	12,0	12,0	12,0	12,0	12,0	12,0	12,0	12,0	12,0	12,0 / 11,2	11,7 / 11,9	
12,0	12,0	12,0	12,0	12,0	12,0	12,0	12,0	12,0	12,0	12,0	11,6	
13,0	12,0	12,0	12,0	12,0	12,0	12,0	12,0	12,0	12,0	12,0	11,3	
14,0	12,0	12,0	12,0	12,0	12,0	12,0	12,0	12,0	12,0	12,0	11,0	
15,0	12,0 / 14,8	12,0	12,0	12,0	12,0	12,0	12,0	12,0	12,0	12,0	10,7	
16,0		12,0	12,0	12,0	12,0	12,0	12,0	12,0	12,0	12,0	10,4	
17,0		12,0	12,0	12,0	12,0	12,0	12,0	12,0	12,0	12,0	10,1	
18,0		12,0	12,0	12,0	12,0	12,0	12,0	12,0	12,0	12,0	9,8	
19,0		12,0	12,0	12,0	12,0	12,0	12,0	12,0	12,0	11,7	9,5	
20,0		12,0 / 19,7	12,0	12,0	12,0	12,0	12,0	12,0	12,0	11,3	9,2	
22,0			12,0	12,0	12,0	12,0	11,7	11,5	11,2	10,3	8,6	
24,0			11,3	11,2	10,7	10,6	10,2	10,0	9,7	9,4	7,9	
26,0			11,0 / 24,5	9,9	9,5	9,3	8,9	8,8	8,4	8,1	7,3	
28,0				8,9	8,5	8,3	7,9	7,7	7,4	7,1	6,7	
30,0				8,2 / 29,4	7,6	7,4	7,0	6,8	6,5	6,2	5,9	
32,0					6,9	6,6	6,2	6,1	5,7	5,4	5,1	
34,0					6,2	6,0	5,6	5,4	5,0	4,7	4,4	
36,0					6,2 / 34,2	5,4	5,0	4,8	4,4	4,1	3,8	
38,0						4,9	4,5	4,2	3,9	3,6	3,3	
40,0						4,6 / 39,1	4,0	3,8	3,4	3,1	2,8	
42,0							3,6	3,3	3,0	2,7	2,4	
44,0							3,3 / 43,9	3,0	2,6	2,3	2,0	
46,0								2,6	2,3	2,0	1,6	
48,0								2,3	2,0	1,7	1,3	
50,0								2,2 / 48,8	1,7	1,4	1,0	
52,0									1,4	1,1		
54,0									1,2 / 53,6	0,9		
56,0												
58,0												
60,0												
62,0												
64,0												
66,0												
68,0	TAB.-Nr. 6100R-75/2127/36.0/12.04 SHS12											
70,0												
Strangzahl / parts reeving	1	1	1	1	1	1	1	1	1	1	1	26 mm
	1	1	1	1	1	1	1	1	1	1	1	28mm
zul. Wind [m/s] allow.wind [m/s]	16,4	15,7	15,1	14,4	13,8	13,1	12,5	11,8	11,1	10,5	9,8	

Zusatzausrüstung / attachments



Hauptausleger SH mit Schnabelausleger S12.1 (12t)
main boom SH with Auxiliary jib S12.1 (12t)



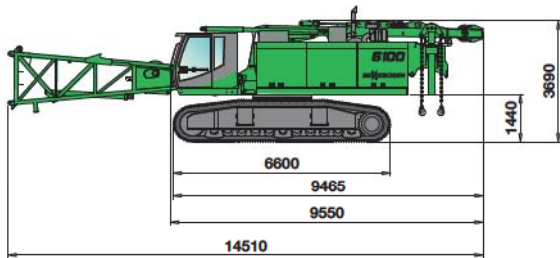
Hauptausleger SH mit Schnabelausleger S24.1 (24t)
main boom SH with Auxiliary jib S24.1 (24t)

Hook on main boom

for 160 KN winds with 26 mm rope diameter

Kapazität	Haken- gewicht	Seilstränge und maximale Traglast					
		6	5	4	3	2	1
12 t	600 kg						12.000
40 t - 1 Rolle	1200 kg				36.000	24.000	12.000
80 t - 3 Rollen	1500 kg	72.000	60.000	48.000	36.000	24.000	12.000

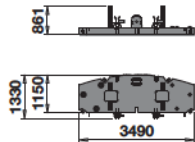
Transportmaße und Gewicht / transport dimensions and weights



6100 Grundmaschine mit Fußstück (inkl. 2 x 20t Winden)
 6100 basic machine with lower boom (incl. 2 x 20t winches)
 Gewicht / weight **65t**
 Breite / width **3.500 mm**

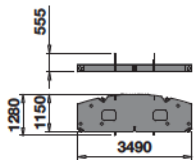
Grundmaschine - base machine

Bodenplatten shoe width	Min.Transportbreite min. transport width
800 mm	3500 mm
900 mm	3600 mm
1000 mm	3800 mm



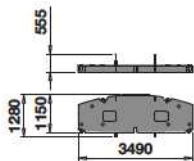
Ballastgrundplatte 1 counterweight base plate 1

Gewicht / weight **kg** **5.400** **(1x)**



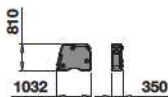
Ballastgrundplatte 2 counterweight base plate 2

Gewicht / weight **kg** **5.250** **(1x)**



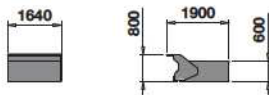
Ballastgrundplatte 3 (nur bei Gegengewicht 36t) counterweight base plate 3 (only for counterweight 36t)

Gewicht / weight **kg** **4.000** **(1x)**



Gegengewicht - 12 Stück (14 Stück bei Gegengewicht 36t) counterweight - 12 pieces (14 pieces for counterweight 36t)

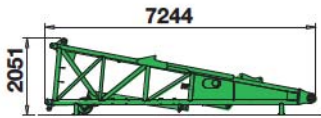
Gewicht / weight **kg** **1.530** **(12x)**



Unterwagenballast - 2 Stück (nur bei Gegengewicht 36t + 15t) carbony counterweight - 2 pieces (only for counterweight 36t + 15t)

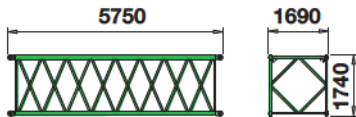
Gewicht / weight **kg** **7.500** **(2x)**

Transportmaße und Gewicht / transport dimensions and weights



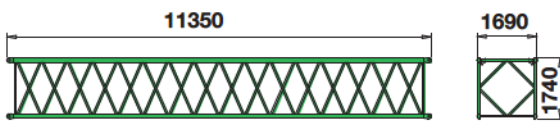
Auslegerfußstück 7 m Typ SH 1608
lower boom 7 m type SH 1608

Gewicht / weight	kg	2.900
Breite / width	mm	1.650



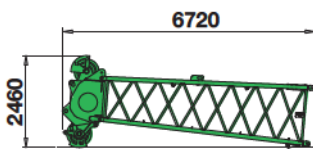
Auslegerzwischenstück 5,6 m Typ SH 1608 (inkl. Seile)
boom insert 5,6 m type SH 1608 (incl. ropes)

Gewicht / weight	kg	875
------------------	----	-----



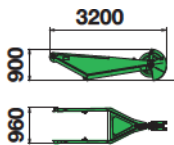
Auslegerzwischenstück 11,2 m Typ SH 1608 (inkl. Seile)
boom insert 11,2 m type SH 1608 (incl. ropes)

Gewicht / weight	kg	1.520
------------------	----	-------



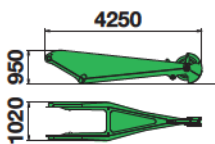
Auslegerkopfstück 5,6 m Typ SH 1608 mit Auslegerkopf Typ T130 (inkl. Seile)
upper boom 5,6 m type SH 1608 with boom head T130 (incl. ropes)

Gewicht / weight	kg	2.200 - 2.750
Breite / width	mm	1.700



Schnabelausleger S12.1
auxilliary jib S12.1

Gewicht / weight	kg	370
Traglast / capacity	t	12



Schnabelausleger S24.1
auxilliary jib S24.1

Gewicht / weight	kg	510
Traglast / capacity	t	24

6100 HD



Dieser Katalog beschreibt Maschinenmodelle, Ausstattungsumfänge einzelner Modelle und Konfigurationsmöglichkeiten (Serienausstattung und Sonderausstattung) der von der SENNEBOGEN Maschinenfabrik gelieferten Maschinen. Geräteabbildungen können Sonder- und Zusatzausstattungen enthalten. Je nach Land, in das die Maschinen geliefert werden, können Abweichungen von der Ausstattung möglich sein, insbesondere bzgl. der Serien- und Sonderausstattung. Alle verwendeten Erzeugnisbezeichnungen können Marken der SENNEBOGEN Maschinenfabrik GmbH oder anderer, zuliefernder Unternehmen sein, deren Benutzung durch Dritte für deren Zwecke die Rechte der Inhaber verletzen kann.

Bitte informieren Sie sich bei Ihrem SENNEBOGEN Vertriebspartner vor Ort über die angebotenen Ausstattungsvarianten. Gewünschte Leistungsmerkmale sind nur dann verbindlich, wenn sie bei Vertragsschluss ausdrücklich vereinbart werden. Liefermöglichkeiten und technische Änderungen vorbehalten. Alle Angaben sind ohne Gewähr. Ausstattungsänderungen und Weiterentwicklungen vorbehalten.

© SENNEBOGEN Maschinenfabrik GmbH, Straubing/Deutschland. Nachdruck, auch auszugsweise, nur mit schriftlicher Genehmigung der SENNEBOGEN Maschinenfabrik GmbH, Straubing/Deutschland.

This catalog describes machine models, the scope of equipment of individual models and configuration possibilities (standard equipment and special equipment) of the machines delivered by SENNEBOGEN Maschinenfabrik. Device illustrations can contain special equipment and supplemental equipment. Depending on the country where the machines are delivered, deviations from the equipment can be possible, particularly relative to the standard equipment and special equipment.

All product designations used can be trademarks of SENNEBOGEN Maschinenfabrik GmbH, or trademarks of other companies who are suppliers to SENNEBOGEN Maschinenfabrik GmbH, the use of which by third parties can violate the rights of the trademark owner.

Information concerning the equipment variants offered is provided on site by your SENNEBOGEN Sales Partner. Desired performance characteristics are only binding, if they have been expressly agreed when the contract is concluded. Availability and technical specifications are subject to change without notice. All information is provided without guarantee of correctness or completeness. Equipment changes and further developments are subject to change without notice.


© SENNEBOGEN Maschinenfabrik GmbH, Straubing/Deutschland. Reproduction, even in part, only with written permission of SENNEBOGEN Maschinenfabrik GmbH, Straubing/Germany.

SENNEBOGEN

SENNEBOGEN
Maschinenfabrik GmbH
Sennebogenstraße 10
94315 Straubing, Germany

Tel. +49 9421 540-144/146
Fax +49 9421 43 882
marketing@sennebogen.de

GO FOR GREEN

 www.sennebogen.de