



AGD Equipment Limited

SALES • RENTAL • SERVICE • PARTS

MINI CRANES

CRAWLER CRANES

TELESCOPIC CRANES

**PILING RIGS
AND EQUIPMENT**

01789 292227

info@agd-equipment.co.uk

AGD Equipment Limited
Avonbrook House
198 Masons Road
Stratford-upon-Avon
Warwickshire
CV37 9LQ
United Kingdom



Sennebogen 643 Specification

www.agd-equipment.co.uk

SEINEBOGEN



128 kW



40 t



43 m



MAX CAB

643 R

Teleskopkran
Telescopic Crane

Specifications

Diesel engine

Output **128 kW/174 HP at 2000 rpm**
 Model **Deutz TCD 2012 L06 2V -TIER III**
 Direct injection, turbo charged, intercooler, reduced emission

Cooling Water cooled
 Air filter Dry air filter with precleaner, automatic dust Discharge, main and safety element, pollution indicator

Fuel tank **300 l**
 Electric system 24 Volt
 Batteries 2 x 110 Ah, main switch

Hydraulic system

load sensing/LUDV system for working functions and drive function

Hydraulic pump Variable displacement piston pump, swashplate type, load sensing regulation for parallel, independent operation of the working functions

Pump regulation Zero-flow regulation, flow on demand control - the pumps only supplying the required oil, pressure cut off

Oil flow max. **280 l/min**
 Pressure max. **330 bar**

Separate hydraulic circuit for swing operation

Pump type Gear pump
 Oil flow max. **35 l/min**
 Pressure max. **240 bar**
 Filtration High-efficiency filtration with long-time change interval, SENNEBOGEN HydroClean micro filtration with water separation, optional

Cooling Large-sized cooling unit

Hydraulic tank **440 l**

Steering Proportional, hydraulically and precise control of the hydraulic functions, 2 servo joysticks for operating movements, additional functions through switches and foot pedals

Safety valves for all hydraulic circuits

High efficiency through well designed hydraulic valves and lines.

Pressure accumulator for lowering of attachments when engine turned off

Central pressure test ports

Safety check valves for boom cylinders

Safety check valves for telescopic boom cylinders

Slew drive

Compact planetary reduction gear with hydraulic piston motor, integrated brake valves

Parking brake Multi-disc brake, spring-loaded

Slew bearing Strong ball bearing, sealed

Slewing speed 0-2 rpm, stepless

Upper carriage

Design Torsion resistant box type design precision machined, steel bushes for the boom pivot.
 Clear, very servicefriendly design longitudinal installation of the engine

Cooling system

Compact 3 circuit cooling system, large sized

Working equipment

Design Decades of experience and state-of-the-art computer simulation guarantee highest stability and durability

Telescopic boom 4-section telescopic boom, full power hydraulically extendable, 23.4 m or 30 m

Folding jib 6.5 m or 13 m length, fast and easy erection, while not using it can be folded at the side of the mainboom

Hoist winch Axial piston hydraulic motor, planetary gear, linepul (1st layer), 40 kN, line speed 0-95 m/min, rope dia. 14 mm, 2. hoist winch optional

Safety brake Spring applied multi disc brake

Crane safety State-of-the-art safe load indicator with clearly laid out display, hoist limit switch, rope limit switch, pressure relief and safety check valves

Cylinders Hydraulic cylinders with high-grade seal and guide system

Undercarriage

Design Very strong, hydraulically extendable crawler undercarriage with integrated, protected drives

Drive system High traction force through 2 speed variable displacement piston motors with directly mounted automatic brake valves and planetary gears at each track side

Parking brake Multi-disc brake, spring loaded

Tracks Maintenance free track type with hydraulic track tensioning system, triple bar shoes. Flat shoes optional

Travel speed 0-1.2 / 0-2.7 km/h

Operating weight

643 R with telescopic boom 30 m, jib 13 m and hook block 20t, 700 mm triple bar shoes

with counterweight 5,4 t approx. 36,900 kg

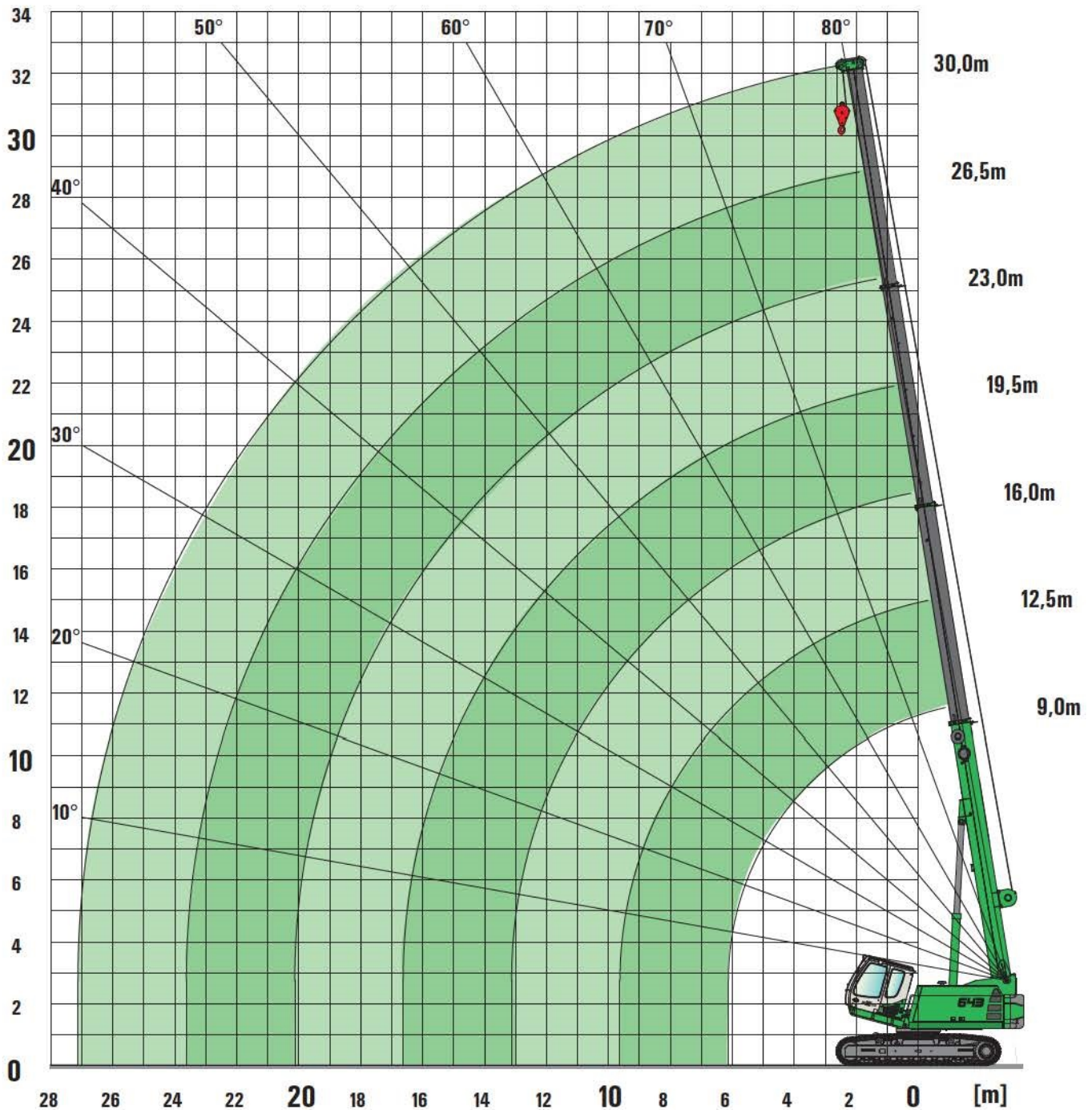
with counterweight 7 t + 4 t approx. 42,500 kg

Operating weight may vary with different equipment and attachments. Subject to technical modification!

Ausleger / Boom



9-30 m



Notes:

1. The rated loads shown are based on the machine on firm level ground and without travelling
2. The rated loads shown are in metric tons and valid for 360 degree slewing
3. Liftcrane capacities are calculated to comply with DIN 15019.2, ISO 4305 & 5° tipping angle
4. The rated loads shown include the weight of all lifting attachments, such as hook & bucket etc
5. The rated loads "Spur 3800" are valid for the maximum extended undercarriage (track width 3800mm). The rated loads "Spur 2300" are valid for the retracted undercarriage
6. Users must de-rate or limited the lifted loads to allow for adverse conditions, such as soft or uneven ground, out of level conditions, wind, side loads, pendulum action, jerking or sudden stopping of loads, inexperience of personnel and travelling with a load.
7. Maximum single line pull for crane operation with a rope diameter of 14mm is 3500kg
8. Loads marked with a * are only valid with special equipment. When the jib is mounted to the side of the basic boom the rated loads have to be reduced.
9. Lifting capacities are for reference only. For actual lifting capacities please refer to the load chart in the operators manual.

Ausleger / Boom



5,4 t



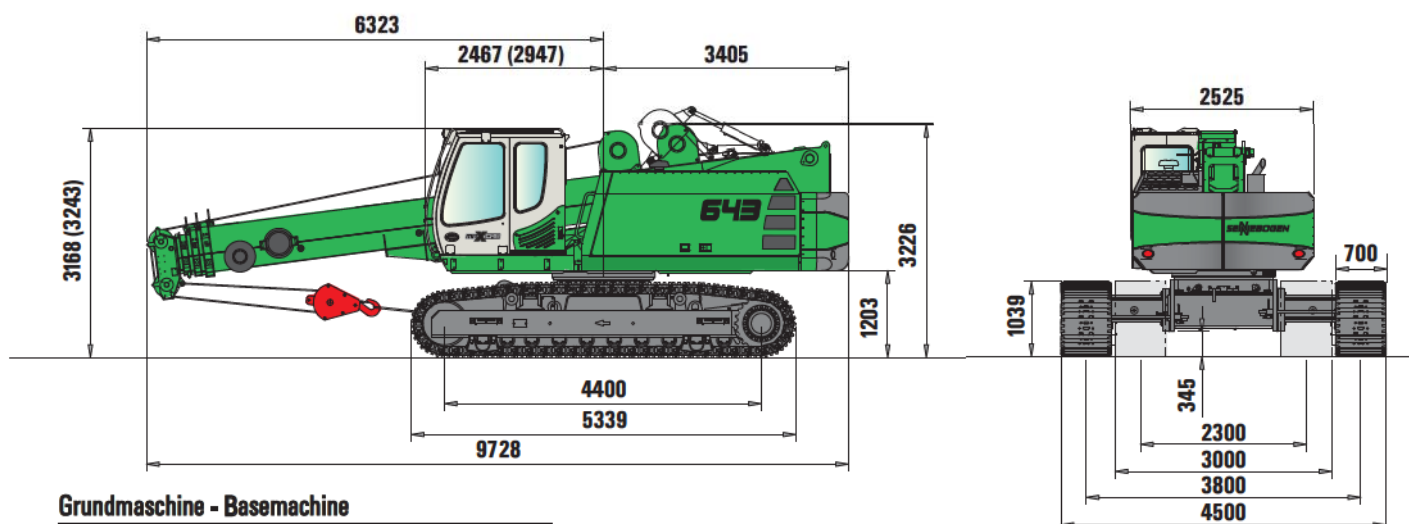
9-30 m

Ausladung / Radius [m]	Auslegerlänge / Boom length [m]													
	9,0		12,5		16,0		19,5		23,0		26,5		30,0	
2,0	40,0*	40,0*												
3,0	31,7	22,9	20,0	20,0	15,0	15,0	14,0	14,0	11,0	11,0	8,9	8,9	5,0	5,0
4,0	27,1	13,9	20,0	13,7	15,0	13,6	14,0	14,0	11,0	11,0	8,9	8,9	5,0	5,0
5,0	21,3	9,7	20,0	9,5	15,0	9,4	13,3	9,9	11,0	10,2	8,6	8,6	5,0	5,0
6,0	15,4	7,2	15,2	7,0	14,9	6,9	12,0	7,3	10,3	7,6	8,3	7,9	5,0	5,0
7,0	11,9/6,2m	6,8/6,2m	11,7	5,3	11,6	5,3	10,9	5,7	9,5	6,0	7,8	6,2	5,0	5,0
8,0			9,4	4,2	9,3	4,1	9,7	4,5	8,7	4,8	7,4	5,0	5,0	5,0
9,0			7,7	3,3	7,6	3,2	8,0	3,6	7,9	3,9	6,9	4,1	5,0	5,0
10,0			6,8/9,6m	2,8/9,6m	6,3	2,5	6,7	2,9	7,0	3,2	6,4	3,3	5,0	3,5
11,0					5,3	2,0	5,7	2,3	6,0	2,6	5,9	2,8	5,0	2,9
12,0					4,5	1,5	4,9	1,9	5,2	2,1	5,3	2,3	5,0	2,5
13,0					3,8	1,2	4,2	1,5	4,5	1,8	4,7	1,9	4,7	2,1
14,0							3,7	1,2	3,9	1,4	4,1	1,6	4,2	1,7
15,0							3,2	0,9	3,4	1,2	3,6	1,3	3,7	1,5
16,0							2,8	0,7	3,0	0,9	3,2	1,1	3,3	1,2
17,0							2,6/16,6m	0,6/16,6m	2,7	0,7	2,8	0,9	3,0	1,0
18,0									2,3	0,5	2,5	0,7	2,7	0,8
19,0									2,1		2,2	0,5	2,4	0,7
20,0									1,8		2,0		2,1	0,5
21,0									1,8/20,1		1,8		1,9	
22,0											1,6		1,7	
23,0											1,3/23,6		1,5	
24,0													1,4	
25,0													1,2	
26,0													1,1	
27,0	Spur 3800 Tab.Nr.: 643R-30.0/75/1977/5.4/08.06													
28,0	Spur 2300 Tab.Nr.: 643R-30.0/75/1227/5.4/08.06													
													0,9/27,1m	

Maße / Dimensions



9-30 m

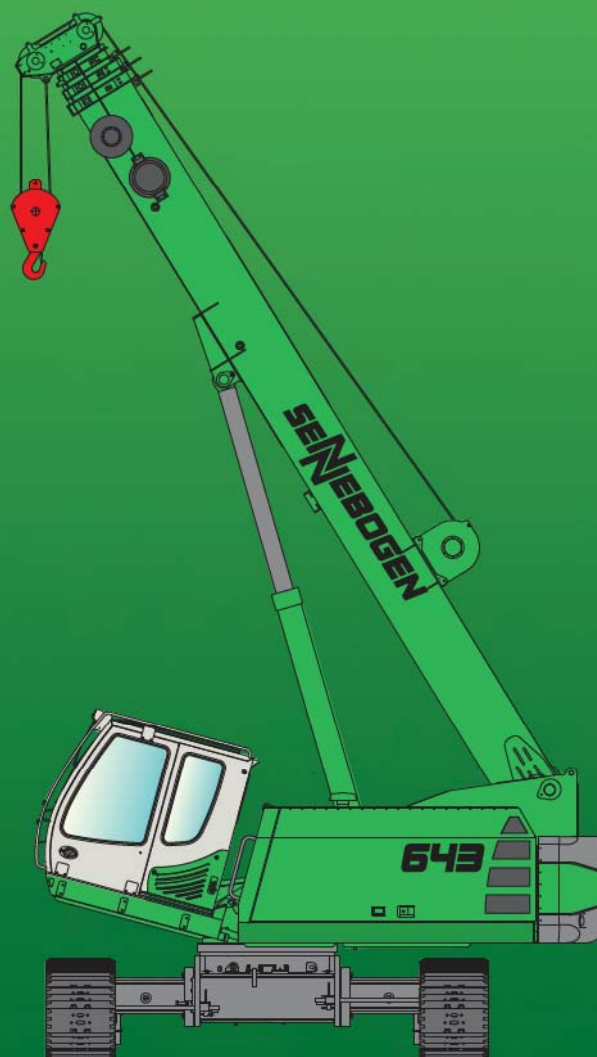


Grundmaschine - Basemachine

Bodenplatten Shoe width	Min. Transportbreite Min. Transport width
700 mm	3000 mm
800 mm	3300 mm

Die Werte in Klammern gelten für hochfahrbare Kabine D200V.
Dimensions in brackets are valid for height-adjustable cab D200V.

643_R



Dieser Katalog beschreibt Maschinenmodelle, Ausstattungsumfänge einzelner Modelle und Konfigurationsmöglichkeiten (Seriensausstattung und Sonderausstattung) der von der SENNEBOGEN Maschinenfabrik gelieferten Maschinen. Geräteabbildungen können Sonder- und Zusatzausstattungen enthalten. Je nach Land, in das die Maschinen geliefert werden, können Abweichungen von der Ausstattung möglich sein, insbesondere bzgl. der Serien- und Sonderausstattung.

Alle verwendeten Erzeugnisbezeichnungen können Marken der SENNEBOGEN Maschinenfabrik GmbH oder anderer, zuliefernder Unternehmen sein, deren Benutzung durch Dritte für deren Zwecke die Rechte der Inhaber verletzen kann.

Bitte informieren Sie sich bei Ihrem SENNEBOGEN Vertriebspartner vor Ort über die angebotenen Ausstattungsvarianten. Gewünschte Leistungsmerkmale sind nur dann verbindlich, wenn sie bei Vertragsschluss ausdrücklich vereinbart werden. Liefermöglichkeiten und technische Änderungen vorbehalten. Alle Angaben sind ohne Gewähr. Ausstattungsänderungen und Weiterentwicklungen vorbehalten.

© SENNEBOGEN Maschinenfabrik GmbH, Straubing/Deutschland. Nachdruck, auch auszugsweise, nur mit schriftlicher Genehmigung der SENNEBOGEN Maschinenfabrik GmbH, Straubing/Deutschland.

This catalog describes machine models, the scope of equipment of individual models and configuration possibilities (standard equipment and special equipment) of the machines delivered by SENNEBOGEN Maschinenfabrik. Device illustrations can contain special equipment and supplemental equipment. Depending on the country where the machines are delivered, deviations from the equipment can be possible, particularly relative to the standard equipment and special equipment.

All product designations used can be trademarks of SENNEBOGEN Maschinenfabrik GmbH, or trademarks of other companies who are suppliers to SENNEBOGEN Maschinenfabrik GmbH, the use of which by third parties can violate the rights of the trademark owner.

Information concerning the equipment variants offered is provided on site by your SENNEBOGEN Sales Partner. Desired performance characteristics are only binding, if they have been expressly agreed when the contract is concluded. Availability and technical specifications are subject to change without notice. All information is provided without guarantee of correctness or completeness. Equipment changes and further developments are subject to change without notice.

© SENNEBOGEN Maschinenfabrik GmbH, Straubing/Deutschland. Reproduction, even in part, only with written permission of SENNEBOGEN Maschinenfabrik GmbH, Straubing/Germany.

SENNEBOGEN

SENNEBOGEN
Maschinenfabrik GmbH
Sennebogenstraße 10
94315 Straubing, Germany

Tel. +49 9421 540-144/146
Fax +49 9421 43 882
marketing@sennebogen.de

GO FOR GREEN

 www.sennebogen.de

BestellNr. / Item No. 108146
643R-0407-20-070710-020810*-030830-060930*-031025-031120*-011215-101310-031410*