

**SMS EXCAVATOR MOUNTED
VIBRATORY HAMMERS**



**PARS SG
MULTIPLIER**

**MADE IN TURKEY
PRODUCED BY SADIKOGLU**

who are we?

Sadikoglu Makine has been a dominant manufacturer in vibro sector since 1970. Our heritage includes being a manufacturer of gears which lead us to become involved in vibratory hammer and pile driving equipment market.. Our first SMS branded vibros were made in 12 years ago in 2006 and our first Side Grip range was launched in 2012.

All ranges of SMS Vibro hammers are simple ,efficientv,durable, robust and utilises proprietary brand components such as Parker motors, SKF bearings, Sun valves.

PRODUCT RANGES

EXCAVATOR
MOUNTED

**SIDE GRIP
SHEET PILER**

STANDART FREQUENCY
EXCAVATOR MOUNTED

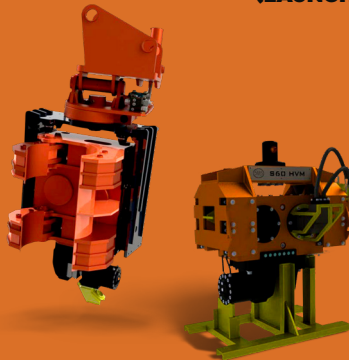
**VIBRATORY
HAMMERS**

EXCAVATOR
MOUNTED

**SIDE GRIP
TUBULAR PILERS**

EXCAVATOR
MOUNTED

**SIDE GRIP
MULTIPILER
(LAUNCHED IN 2019)**



GENERAL SPECS OF SIDEGRIP PARS VIBRATORY HAMMERS



SMS Pars Side Grip Vibratory Hammer series enable sheet piles, tubular piles, H-beams, I-beams to be lifted from the ground, pitched and driven without the need for a crane, piling gates or in some cases banksman, making this piling system far more cost effective than the traditional methods.

SMS Pars Side Grip Vibratory Hammer series are attached to the end of the dipper arm of an excavator. by an adaptor produced by SMS. SMS Pars Series are hydraulically driven by the excavator and easily controlled by the operator. The Vibratory unit can be rotated vertically and horizontally.

- **PRODUCT MATERIAL IS WELDOX**
- **360° ROTATION AND +/-30° TILTING**
- **ELECTRONIC DISPLAY TO WATCH PILING ANGLES**
- **OWN DESIGNED OIL COOLING SYSTEM. OUR OWN DESIGNED COOLING SYSTEM PROVIDES YOU 30% MORE PILING TIME THEN OTHER BRANDS**
- **SKF BEARINGS**
- **PARKER HYDROMOTOR**
- **OWN PRODUCTION GEAR SYSTEM HEAT TREATED**
- **WHOLE BODY HEAT TREATMENT**
- **COST EFFECTIVE**
- **HIGH EFFICIENCY**
- **DURABILITY AND MORE ROBUST**

GENERAL SPECS OF SIDEGRIP PARS VIBRATORY HAMMERS

PARS SG MULTIPLIER		30
Eccentric Moment (Kgm)		3
Centrifugal Force (kN)		310
Speed (d/d)		3000
Max. Pulling Force (kN)		60
Max. Pushing Force (kN) 80		40
Total Weight (kg)		1650
Total Length (mm)		1280
Total Width (mm)		1100
Total Height (mm)		2300
Flow (Lt/min)		120
Working Pressure (bar)		300
Power (kW)		165
Hydromotor		F12-40
Oil Pump		+
Number of Cylinders		3
Rotation-Swing Angles(°)		360-30
Suitable Excavator class		14-20 Tons
Transformable system (only with pars multipiler)		
Sheet Piles	400 mm- 600 mm 4/6/8 meter lenght	Max 800 kg
H Beam	H180 - H500 4/6/8 meter lenght	Max 800 kg
Tubular Pile , Tubes	80 mm - 325 mm 4/6/8 meter lenght	Max 800 kg
Wood Piles		
PARS SG SHEET PILER Sheet Piles	400 mm- 600 mm 4/6/8 meter lenght	Max 800 kg
PARS SG TUBULARPILER Tubular Pile , Tubes	80 mm - 325 mm 4/6/8 meter lenght	Max 800 kg

40	60	80
4	6	8
370	450	604
2800	2500	2500
120	120	175
80	80	90
1850	2750	3500
1200	1200	1350
1100	1300	1422
2250	2350	2560
170	204	240
300	300	300
85,0	120	165
F12-30 x 2 pieces	F12-40 x 2 pieces	F12-40 x 2 pieces
+	+	+
3	3	3
360-30	360-30	360-30
20 -28 tons	28-32 Tons	32 Tons and Over

Suitable for Sheet piling and tubular piling

400 mm- 800 mm 6 / 8 / 10 meter lenght Max 1200 kg	400 mm- 800 mm 8/10/12 meter lenght Max 2300 kg	400 mm- 1200 mm 12/ 16 meter lenght Max 2850 kg
H180-H500 6 / 8 / 10 meter lenght Max 1200 kg	H180-H500 8/10/12 meter lenght Max 2300 kg	H180 - H500 12/ 16 meter lenght Max 2850 kg
80 mm to 426 mm 6 / 8 / 10 meter lenght Max 1200 kg	80 mm to 500 mm 8/10/12 meter lenght Max 2300 kg	90 mm to 762 mm 12/ 16 meter lenght Max 2850 kg
150 mm – 600 mm 6 / 8 / 10 meter lenght Max 1200 kg	150 mm – 600 mm 8/10/12 meter lenght Max 2300 kg	150mm – 630 mm 8/10/12 meter lenght Max 2850 kg
400 mm- 800 mm 6 / 8 / 10 meter lenght Max 1200 kg	400 mm- 800 mm 8/10/12 meter lenght Max 2300 kg	400 mm- 1200 mm 12/ 16 meter lenght Max 2850 kg
80 mm to 426 mm 6 / 8 / 10 meter lenght Max 1200 kg	80 mm to 500 mm 8/10/12 meter lenght Max 2300 kg	90 mm to 762 mm 12/ 16 meter lenght Max 2850 kg

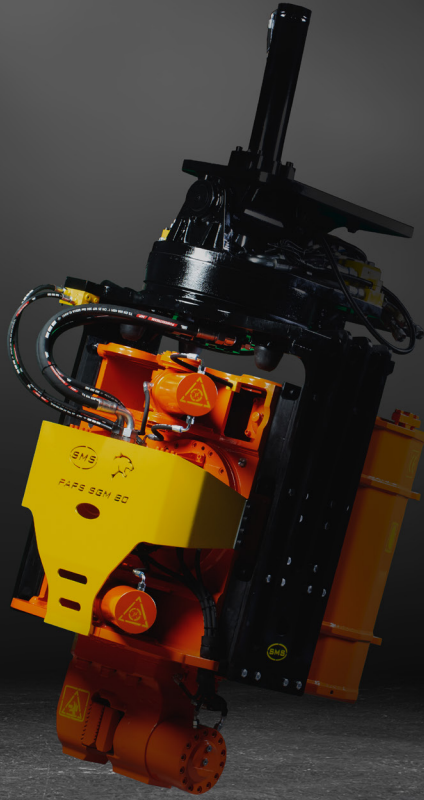


SMS PARS

SIDE GRIP

VIBRO HAMMER SERIES

Using the table right side, you can choose the most appropriate model from among the PARS SIDE GRIP vibro hammer series. The choice is based on the dimensional and tonnage characteristics of your excavator or your vehicle. At the last choice, the engine size and hydraulic system of the excavator or the carrier will be decisive. (Oil pumps, flow rate, pressure and site and ground conditions to be used should be taken into consideration.)



By sadikoglu



EXCAVATOR TYPE	SMS PARS SIDE GRIP SERIES			
	30	40	60	80
8 - 14 ton				
14 - 20 ton				
18-28 ton				
28 - 32 ton				
34 - 42 ton				
42 ton <				



PARS SIDE GRIP MULTIPLIER

TRANSFORMABLE "DOVETAIL" CLAMPS

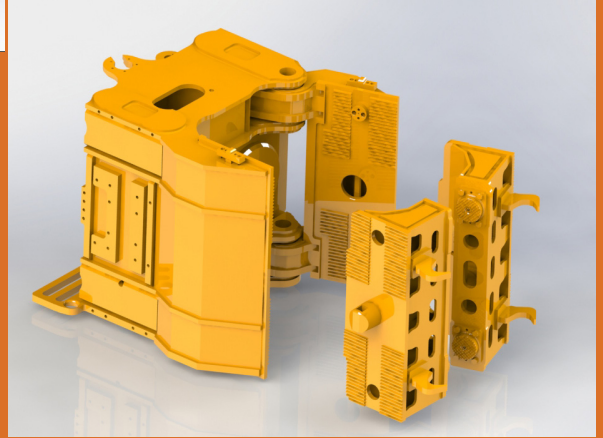
- With our Patented New Generation Transformable Pars Side grip multipiler vibratory hammer, you can drive different type of piling works from sheet piles, tube piles and H- beams, I-beams to timber piles. And you can use up to Max Ø762 dia tubes. With this system you save a lot time on site while transforming a sheetpiler into tubular piler and it provides you much more stronger gripping power on arms due to the it's special surface and connection desing on arms.

- With "DOVETAIL SYSTEM " has a large bonding surface that is more resistant to high pressure forces and also achieves a movable jaw configuration with an easily detachable and attachable mounting construction. By this system you do not need lots of pins and bolts to connect the jaws on body of Vibro hammer

- In the known systems/cases,a force is required to secure jaws assembled to the body of vibro hammer and it should also hold the profiles connected to the jaws securely against to vertical forces during piling works. In order to meet these forces, a large number of fasteners were needed, which would meet the cutting/breaking forces required for the jaws to remain rigid on the body of vibro hammer. With our New Dovetail System these problems are completely eliminated.



T U B E



S H E E T P I L E

**PATENT
PENDING**



PARS SIDE GRIP
SERIES

CONTROL SYSTEM

With the Control Unit which we install in Excavator, you can Control all movements of your vibratory hammer. You can do $\pm 30^\circ$ piling and can see your piling angles from the programmable monitor. Also you can see how many hours your piling machine worked actively.

PARS SIDE GRIP
SERIES

HYDRAULIC SYSTEM

In our entire hydraulic system we use only Rexroth. The rexroth mark products are used on our own production valve block. All our models are working without compromising quality by using PARKER brand hydraulic motors.

WHY SHOULD I CHOOSE

SMS VIBRATORY HAMMERS?



High efficiency



High durability



Low cost



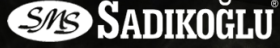
7/24 after sale service
support



Fast delivery



Win while buying



FACTORY ADDRESS:

KARADENİZLİLER MAHALLESİ
YUCELEN SOKAK NO 8 BASISKELE
KOCAELİ / TURKEY

+90 (262) 335 03 17

+90 (262) 335 24 55

sadikoglu@sadikoglumakine.com.tr



AUTHORISED
**INTERNATIONAL
DISTRIBUTOR**

ADDRESS:

İZMİT SAN. SİT. 1. CADDE
404 BLOK NO:4 41040
KOCAELİ / TURKEY

+90 262 335 62 38

+90 554 692 57 51

alkan@sevenocean.com.tr

www.sadikoglumakine.com.tr