



**AGD Equipment Limited**

SALES • RENTAL • SERVICE • PARTS

**MINI CRANES**

**CRAWLER CRANES**

**TELESCOPIC CRANES**

**PILING RIGS  
AND EQUIPMENT**

**01789 292227**

**info@agd-equipment.co.uk**

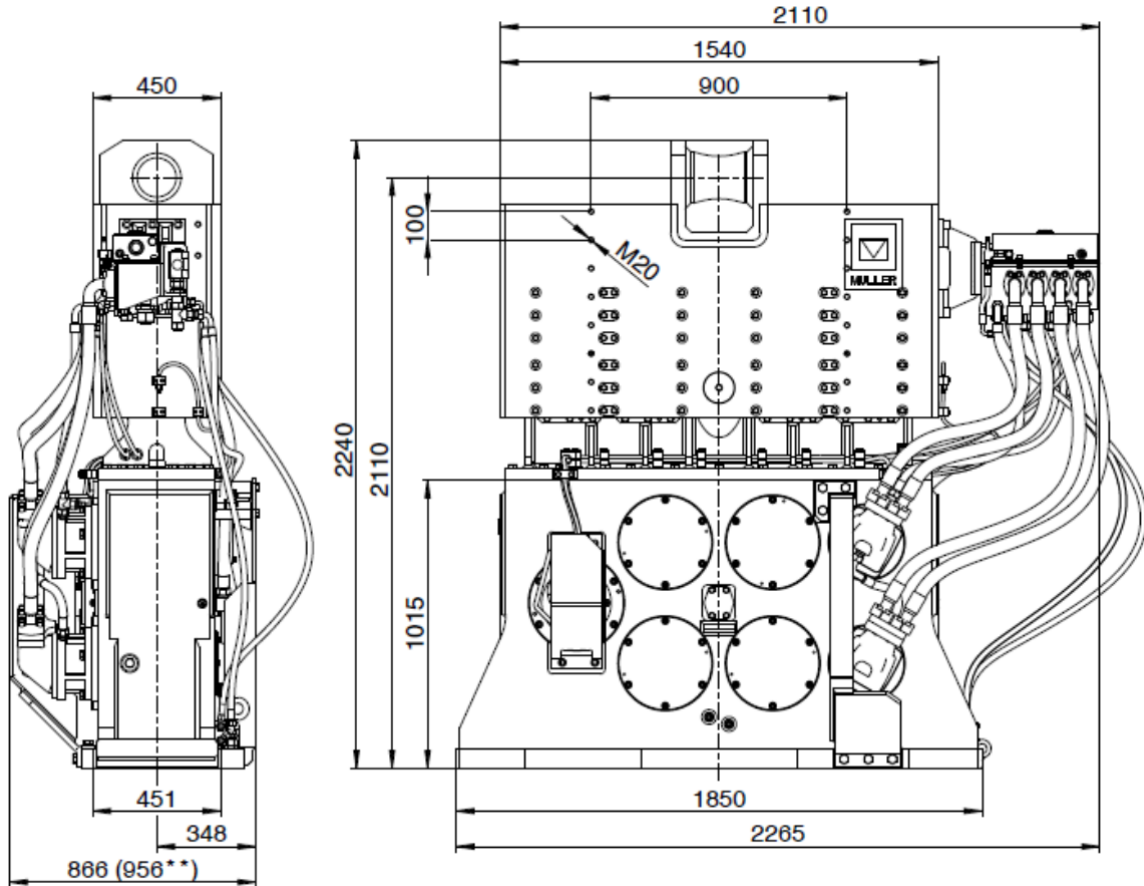
AGD Equipment Limited  
Avonbrook House  
198 Masons Road  
Stratford-upon-Avon  
Warwickshire  
CV37 9LQ  
United Kingdom



# **MÜLLER MS-28 HFV Vibratory Hammer with MS-A 420 Power Pack**

[www.agd-equipment.co.uk](http://www.agd-equipment.co.uk)

# MÜLLER MS-28 HFV Vibratory Hammer



## Technical Data

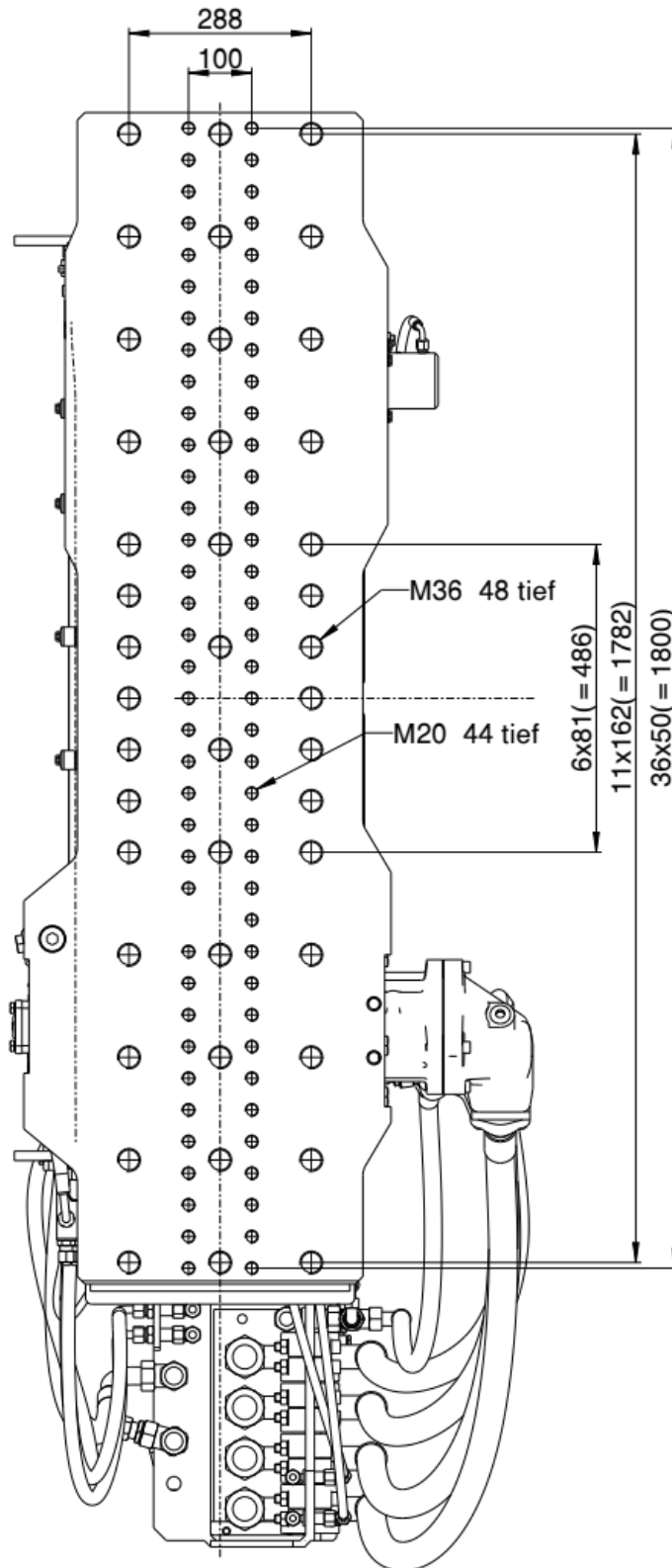
Centrifugal Force Max.	kN	1500
Eccentric Moment	Kgm	0-28
Oscillation Frequency Max.	Hz	36.8
Speed Max.	1/min	2210
Pulling Force Max.	kN	500
Push Down Max.	kN	250
Weight*	kg	5200
Weight (dynamic)*	kg	2950
Amplitude Max.	mm	18
Power Max. (Standard)	kW	380
Power Max. (Performance)	kW	518
Volume Input Max. (Standard)	l/min	652
Volume Input Max. (Performance)	l/min	888
Working Pressure Max. (Standard)	bar	350
Working Pressure Max. (Performance)	bar	350

\* without clamping device

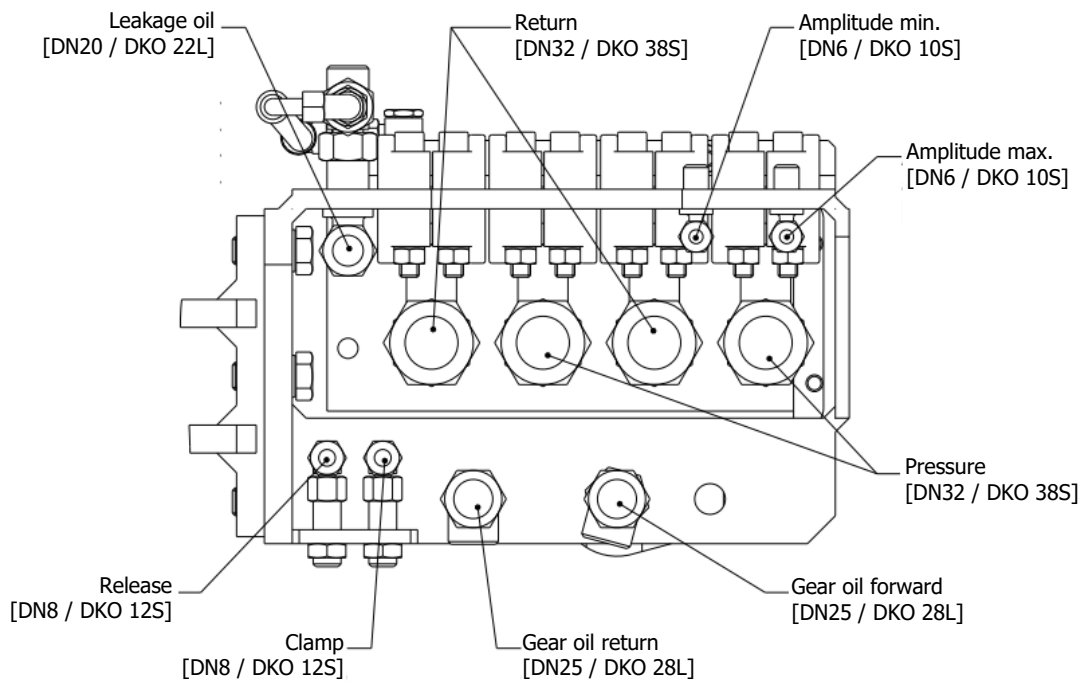
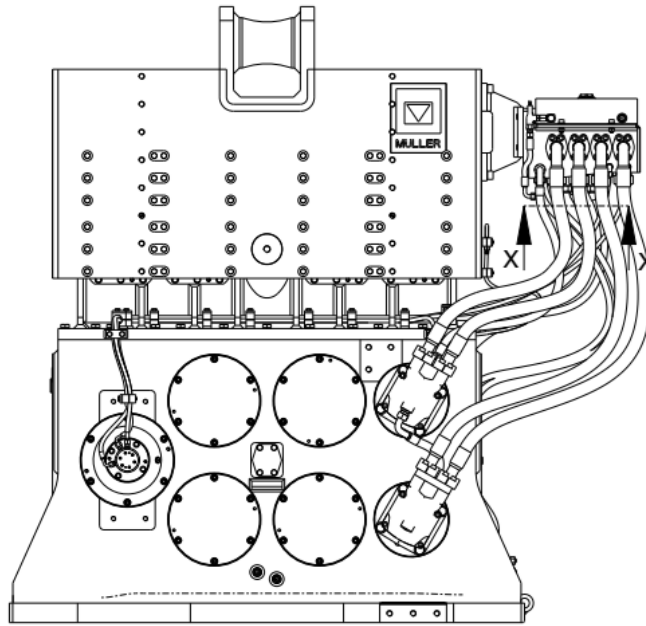
Recommended power pack: Type MS-A 420

Recommended clamping device: Type MS-U 180

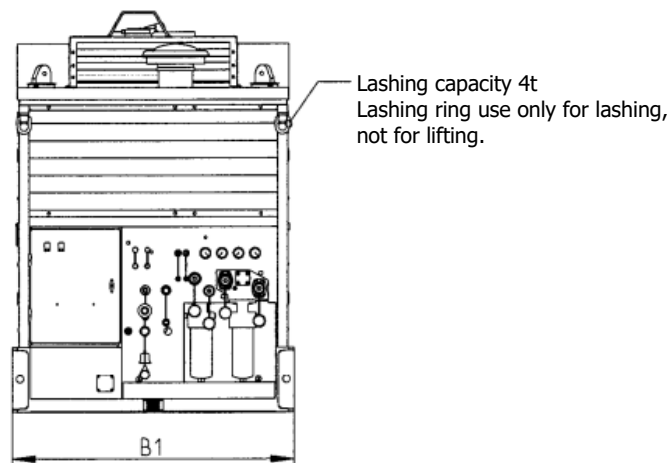
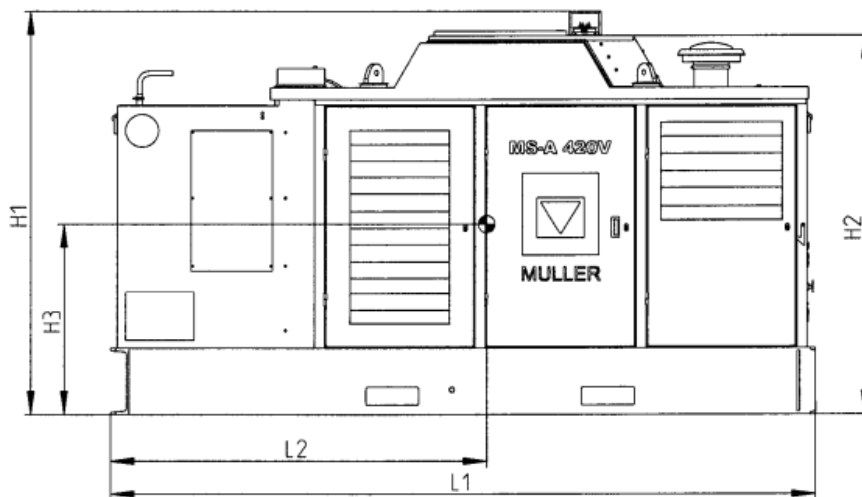
# Base Plate



# Hydraulic Connection

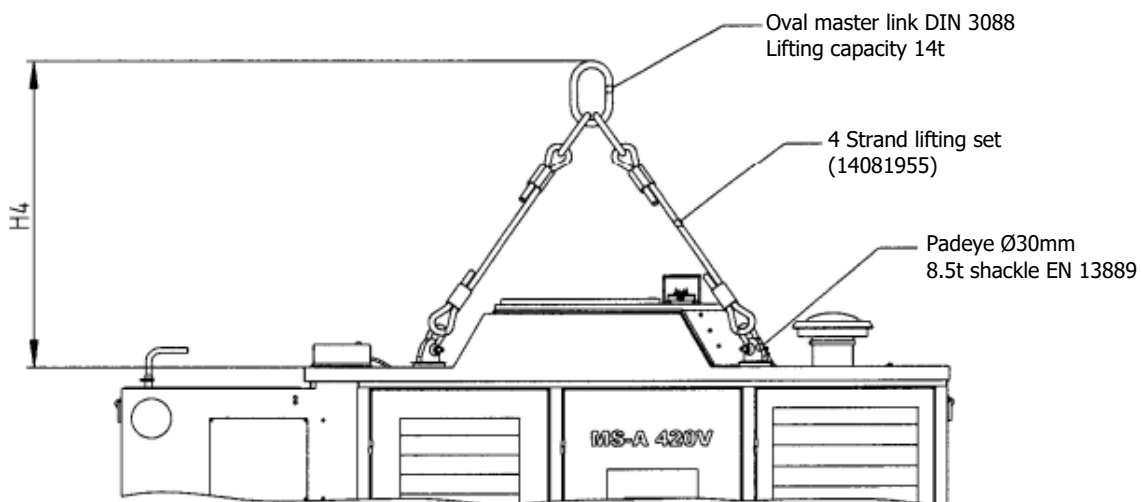


# MÜLLER MS-A 420V Power Pack



L1	L2	B	H1	H2	H3	H4
4250mm	2295mm	1700mm	2450mm	2280mm	1130mm	1500mm

## Lifting Instruction



## Technical Data

Diesel Engine	CAT C15 ATAAC
Exhaust Certification EU/EPA	Stage 5
Performance	433 kW
Speed	2000 min <sup>-1</sup>
Distributor Gear	i=0.706
Fuel Tank Volume Max.	900 litres
Hydraulic Tank Volume Max.	280 litres
Weight without Fuel	6800 kg

## Pump Equipment

Vibrator Drive Pumps	2 x 140 cm <sup>3</sup> /U
Delivery Max.	2 x 370 =7400 l/min
Working Pressure Max.	380 bar

Clamp Hydraulic Pump	10 cm <sup>3</sup> /U
Delivery	27 l/min
Working Pressure Max.	350 bar

## Cooler Equipment

Hydraulic Oil Cooler	
Oil-Air-Radiator	
Cooling Capacity	55 kW

Vibrator Gear Oil Cooler	
Oil-Air-Radiator	
Cooling Capacity	** kW

\*\* Optional – dependent on vibrator