



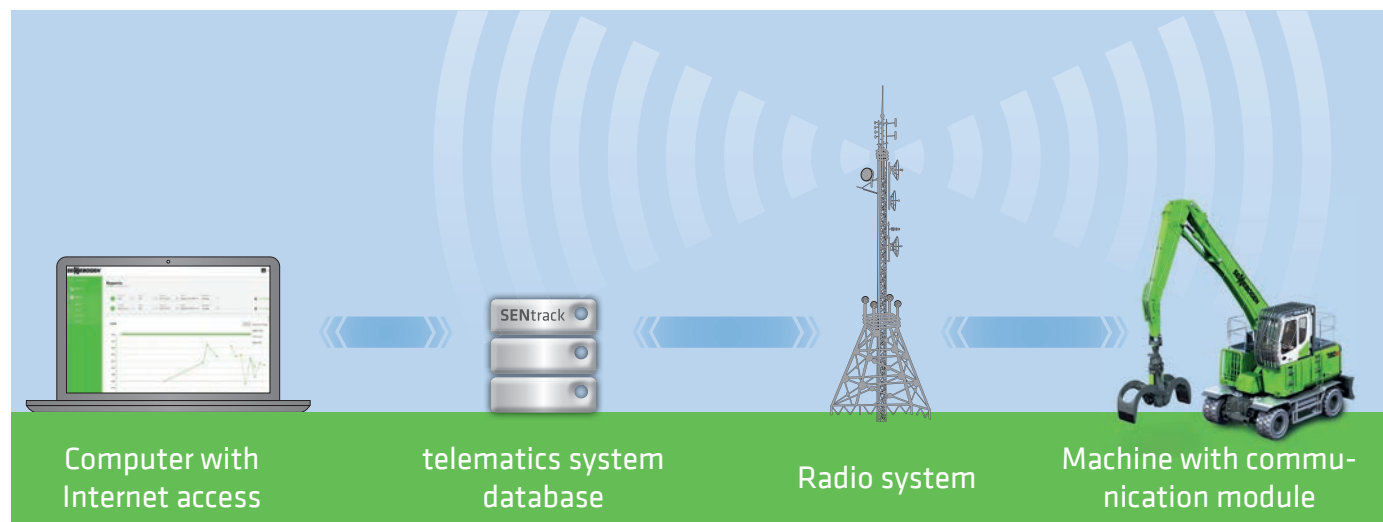
# **SENtrack<sup>DS</sup>** telematics system

**SENnebogen**

## SENtrack<sup>DS</sup> telematics system

The **SENtrack<sup>DS</sup>** telematics system consists of a communication module and is networked with the machine. The module communicates with the telematics system database via a cellular network.

The second part of the system is formed by your computer and Internet access, which you use along with your login and password to gain access to your data in the telematics system database.



Access to the database is provided for a period of 2 years and can then be extended. The SENtrack system can be used for all E-series machines with diesel or electric drive. D-series machines: on request

## Your advantages

### 1. You reduce your service costs

- as the key operating parameters allow you to keep an eye on your machines in their optimum operating state at all times (temperatures, consumption)
- as you can arrange maintenance or a service as a precaution if the operating parameters deviate significantly from the set value

### 2. You improve your productivity

- as you can identify and optimize the capacity utilization of the machines
- as you can assign the right machine to the right application
- by analyzing the routes, where necessary, to optimize your site

### 3. You reduce your consumption figures

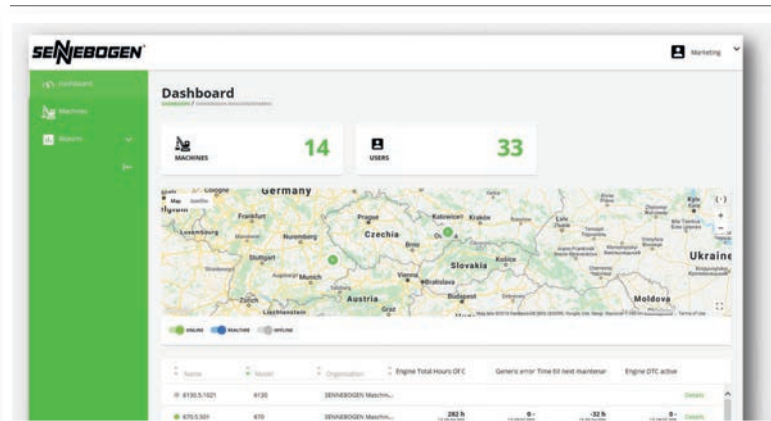
- as you can identify and reduce the machines' idle times
- by optimizing the set-up parameters on the machine control in the event of underload

### 4. You safeguard your investment

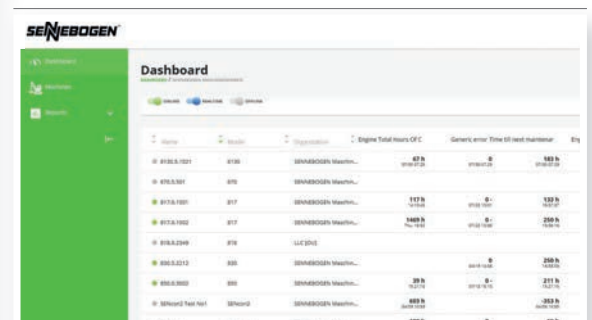
- thanks to alarms keeping you informed about critical states
- as you can deactivate the machine centrally in the event of irregular movements

# Software functions

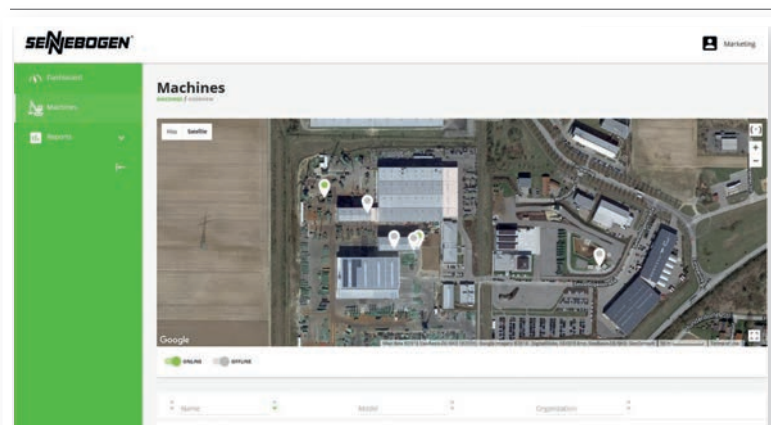
**Dashboard** User-configurable overview of the machine park



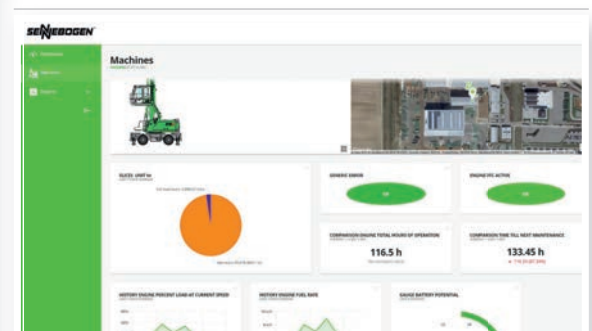
## Dashboard details



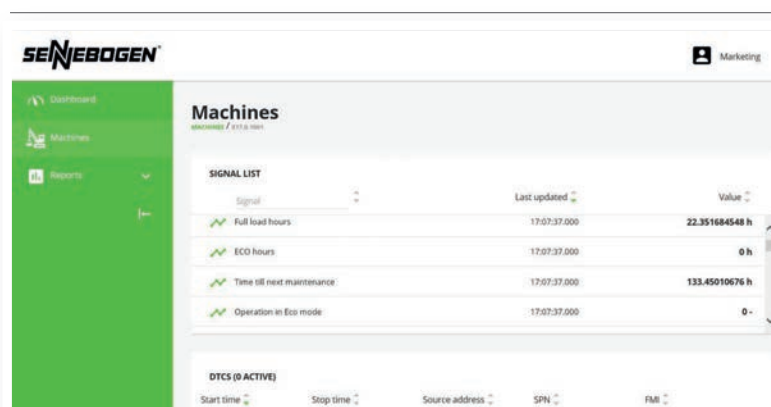
**Machines** Detailed data, machine parameters and status messages



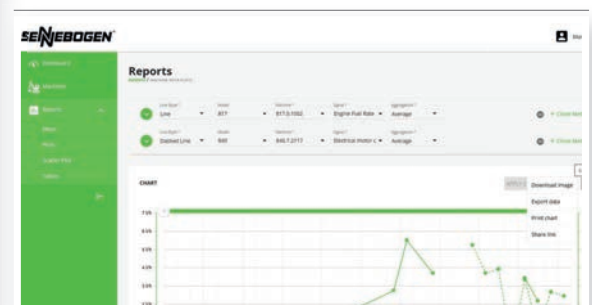
## Machine details



**Reports** Reports with up-to-date machine data, recorded over extended periods of time

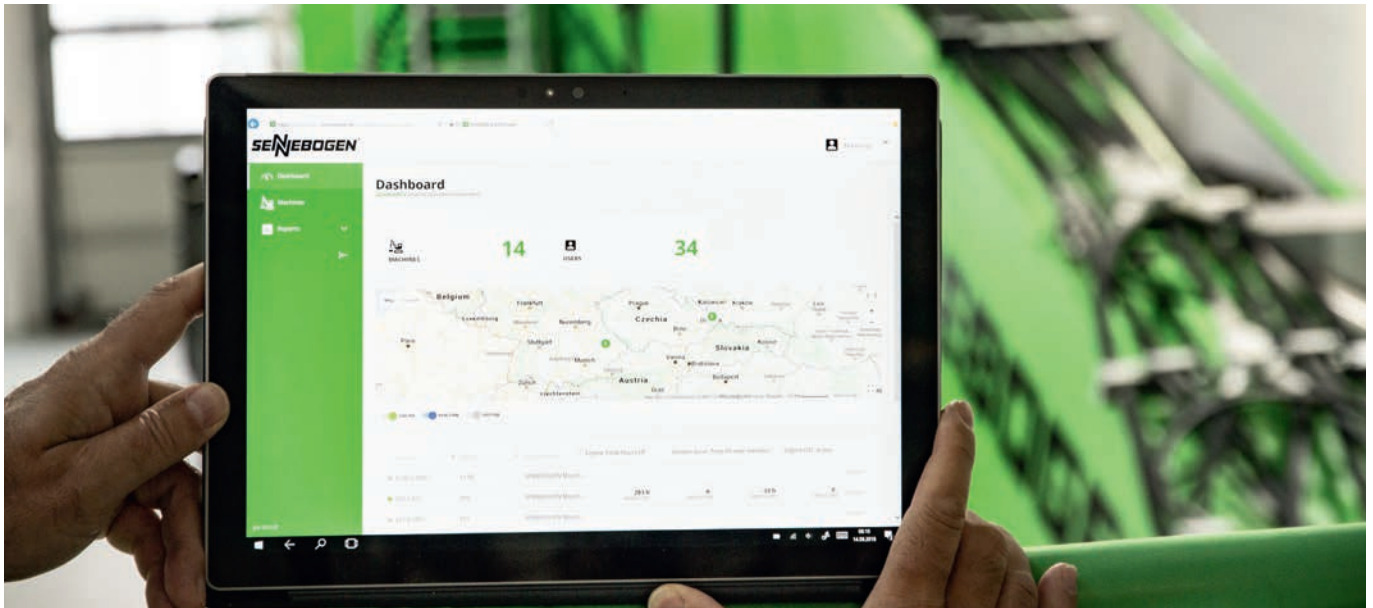


## Report details



The graphical user interface provides you with rapid access to all relevant parameters and functions. The user is led intuitively the self-explanatory system.

## Want to make optimum use of the telematics system?



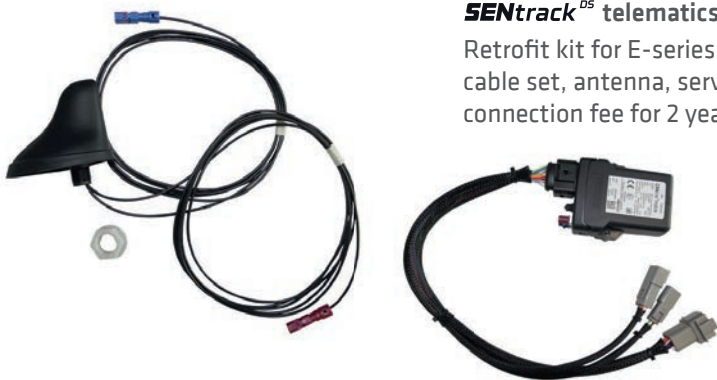
### Inquire about individual training in our SENNEBOGEN Academy:

- **SENtrack<sup>DS</sup>** telematics system: hardware, software, applications
- Retrofit to existing machines
- Machines, maintenance, service
- Driving licenses, technical training

## Retrofitting

### **SENtrack<sup>DS</sup>** telematics system

Retrofit kit for E-series incl. module, cable set, antenna, server access and connection fee for 2 years



The **SENtrack<sup>DS</sup>** telematics system is also available as a retrofit kit for your existing machines. It is simple to install and can generally be carried out without having to call in SENNEBOGEN personnel.

SENNEBOGEN  
Maschinenfabrik GmbH  
Hebbelstraße 30  
94315 Straubing, Germany  
Tel. +49 94 21 540-0  
marketing@sennebogen.de  
www.sennebogen.com

SENNEBOGEN  
Maschinenfabrik GmbH  
Sennebogenstraße 10  
94315 Straubing, Germany  
Tel. +49 94 21 540-0  
marketing@sennebogen.de  
www.sennebogen.com

SERVICE CENTER  
Hebbelstraße 29  
94315 Straubing, Germany  
Tel. +49 94 21 540-200  
spareparts@sennebogen.de  
www.sennebogen.com

SENNEBOGEN  
Akademie GmbH & Co. KG  
Sennebogenstraße 8  
94315 Straubing, Germany  
Tel. +49 94 21 540-361  
akademie@sennebogen.de  
www.sennebogen-akademie.de