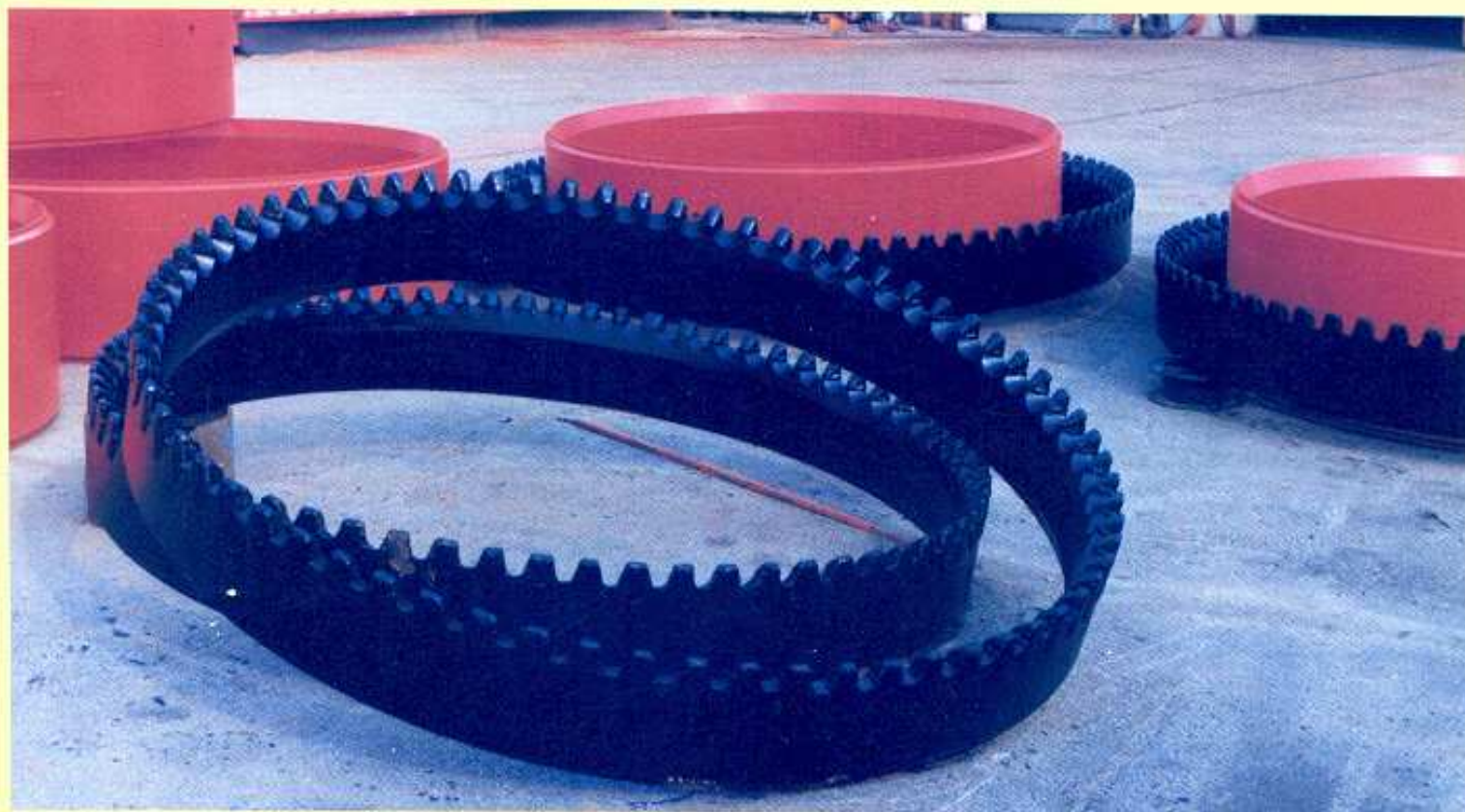


TYPE I-V

TIPO I-V

casing shoes
scarpe per tubi colonna



Features:

Type I casing shoes consist of flame-cut teeth complete with double hardfacing (60 HRC).

Casing shoes Type II - V are meant for application of variable section teeth complete with special widia inserts. Type V teeth are also interchangeable.

Applications:

Type I shoes are suitable for detritus soils with a compressive strength of up to about 200 kg/cm², whilst Type II - V shoes are particularly suited for difficult terrains.

Caratteristiche:

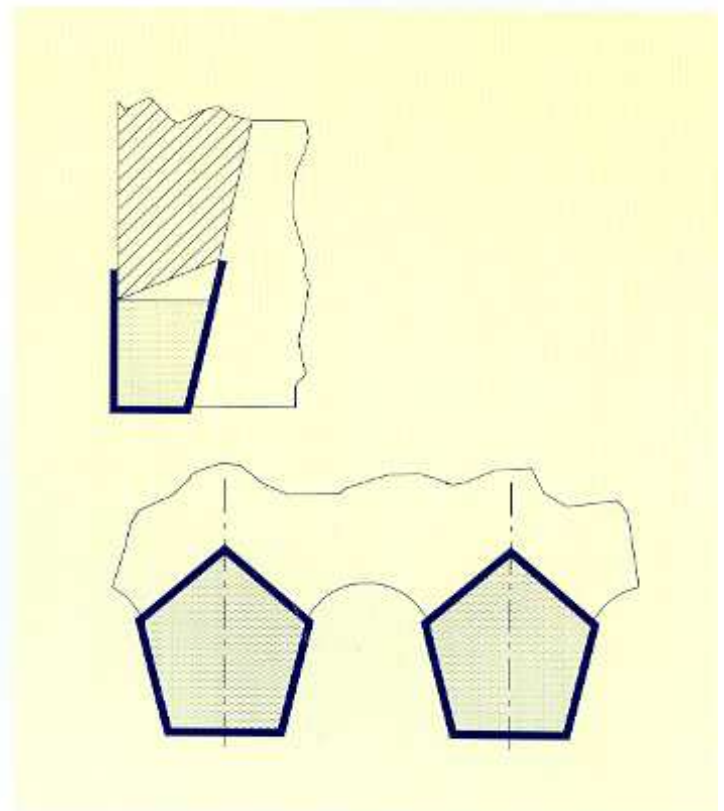
Le scarpe per tubi colonna Tipo I sono caratterizzate da denti ricavati dall'anello base e, nelle zone di maggiore usura, ricoperti da un doppio riporto con durezza pari a 60 HRC.

Le scarpe Tipo II - V sono predisposte per l'applicazione di denti completi con speciali inserti in widia. I denti Tipo V, inoltre, sono intercambiabili.

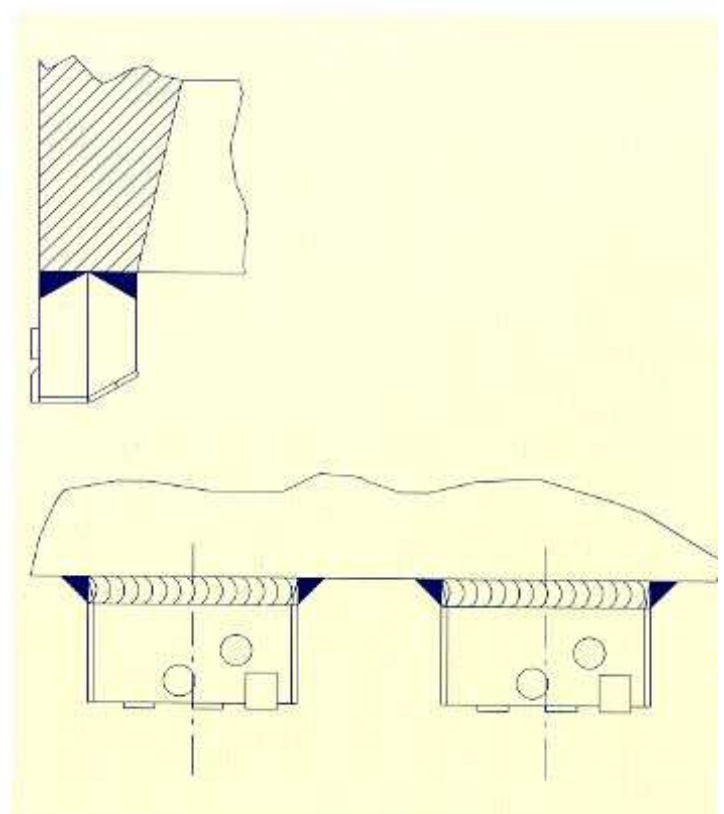
Applicazioni:

Le scarpe Tipo I sono idonee per lo scavo in terreni sciolti aventi una durezza fino a circa 200 kg/cm² mentre le scarpe Tipo II - V sono particolarmente indicate per terreni difficili.

TYPE I - TIPO I	
Casing diameter (mm) Diametro tubo colonna (mm)	Number of teeth Numero di denti
600/40 - 600/50	18
700/40 - 700/50	23
800/40 - 800/50	28
900/40 - 900/50	31
1000/40 - 1000/50	35
1200/40 - 1200/50	42
1300/40 - 1300/50	46
1500/40 - 1500/50	52
1600/40 - 1600/50	56
1800/50 - 1800/60	63
2000/50 - 2000/60	70
2200/60 - 2200/70	77
2500/70 - 2500/75	86
3000/75	104

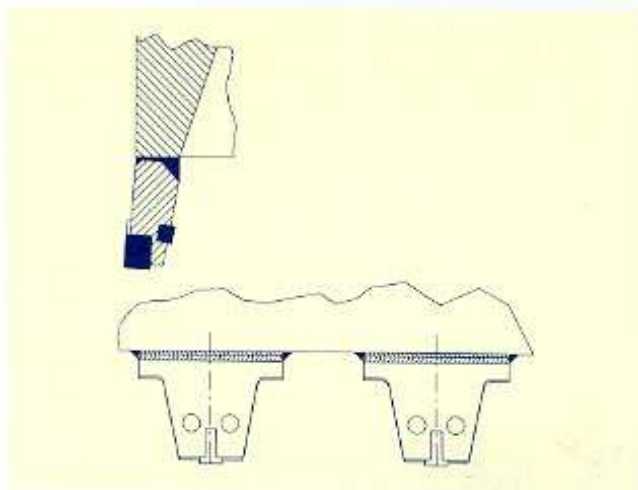


TYPE II - TIPO II	
Casing diameter (mm) Diametro tubo colonna (mm)	Number of teeth Numero di denti
600/40 - 600/50	13
700/40 - 700/50	15
800/40 - 800/50	17
900/40 - 900/50	19
1000/40 - 1000/50	21
1200/40 - 1200/50	26
1300/40 - 1300/50	28
1500/40 - 1500/50	32
1600/40 - 1600/50	35
1800/50 - 1800/60	39
2000/50 - 2000/60	43
2200/60 - 2200/70	48
2500/70 - 2500/75	54
3000/75	65

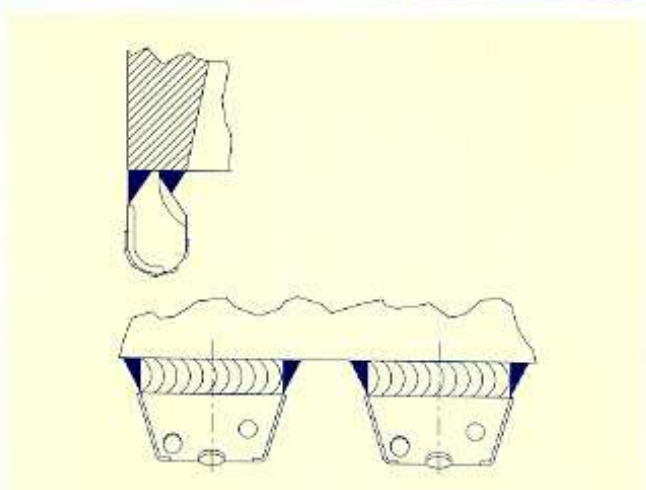


TYPE III - TIPO III

Casing diameter (mm) Diametro tubo colonna (mm)	Number of teeth Numero di denti
600/40 - 600/50	16
700/40 - 700/50	16
800/40 - 800/50	16
900/40 - 900/50	18
1000/40 - 1000/50	18
1200/40 - 1200/50	20
1300/40 - 1300/50	24
1500/40 - 1500/50	28
1600/40 - 1600/50	28
1800/50 - 1800/60	30
2000/50 - 2000/60	36
2200/60 - 2200/70	40
2500/70 - 2500/75	45
3000/75	54

**TYPE IV - TIPO IV**

Casing diameter (mm) Diametro tubo colonna (mm)	Number of teeth Numero di denti
600/40 - 600/50	11
700/40 - 700/50	13
800/40 - 800/50	14
900/40 - 900/50	16
1000/40 - 1000/50	18
1200/40 - 1200/50	22
1300/40 - 1300/50	24
1500/40 - 1500/50	28
1600/40 - 1600/50	29
1800/50 - 1800/60	33
2000/50 - 2000/60	37
2200/60 - 2200/70	41
2500/70 - 2500/75	46
3000/75	56

**TYPE V - TIPO V**

Casing diameter (mm) Diametro tubo colonna (mm)	Number of teeth Numero di denti
600/40 - 600/50	11
700/40 - 700/50	13
800/40 - 800/50	15
900/40 - 900/50	17
1000/40 - 1000/50	19
1200/40 - 1200/50	22
1300/40 - 1300/50	24
1500/40 - 1500/50	28
1600/40 - 1600/50	30
1800/50 - 1800/60	34
2000/50 - 2000/60	38
2200/60 - 2200/70	41
2500/70 - 2500/75	47
3000/75	57

